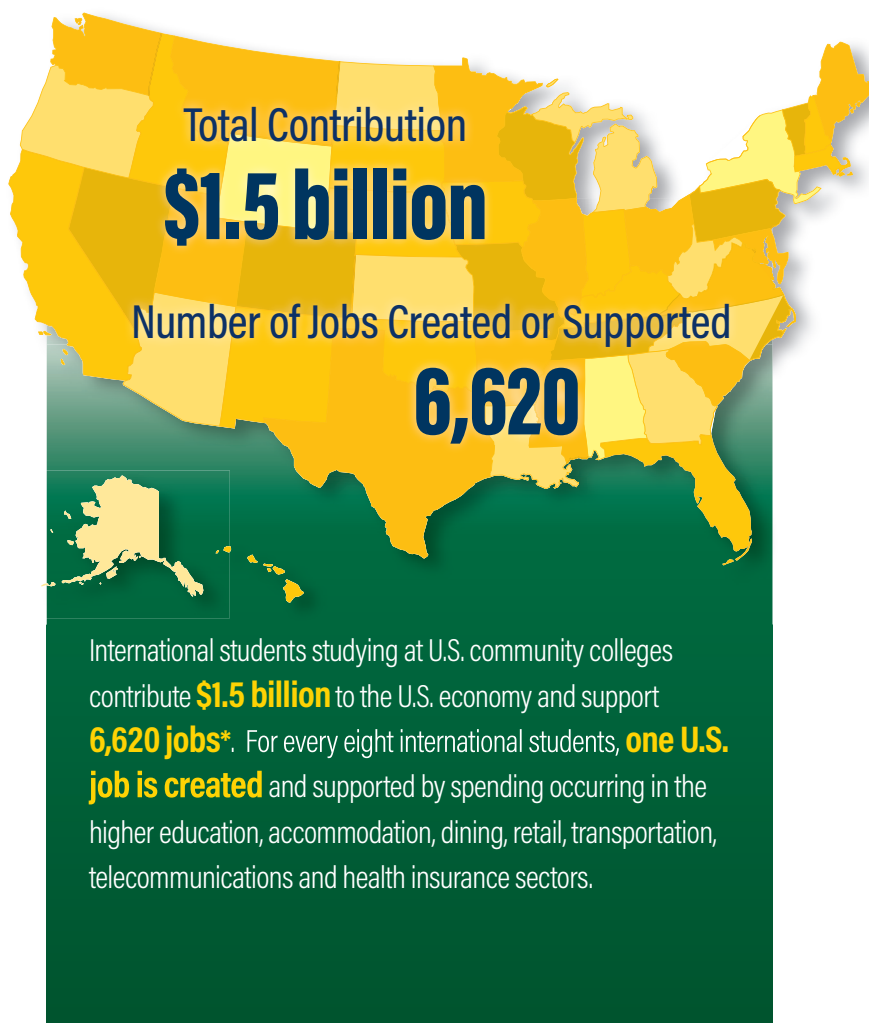


Economic Value of International Students at U.S. COMMUNITY COLLEGES



State	Int'l Students	U.S. Dollars	Jobs
Alabama	165	\$4.5 million	18
Alaska	N/A†	N/A†	N/A†
Arizona	764	\$20.6 million	90
Arkansas	70	\$1.6 million	6
California	12,866	\$448.9 million	2,004
Colorado	264	\$7.6 million	34
Connecticut	59	\$1.8 million	8
Delaware	61	\$1.4 million	6
District of Columbia	N/A†	N/A†	N/A†
Florida	4,404	\$129 million	581
Georgia	950	\$34.3 million	165
Hawaii	645	\$21.4 million	90
Idaho	N/A†	N/A†	N/A†
Illinois	749	\$19.9 million	95
Indiana	273	\$6.1 million	25
Iowa	721	\$13.7 million	52
Kansas	635	\$14.8 million	58
Kentucky	79	\$2.1 million	9
Louisiana	142	\$3.1 million	13
Maine	78	\$1.8 million	7
Maryland	1,744	\$64.3 million	291
Massachusetts	915	\$23.3 million	106
Michigan	861	\$18.4 million	76
Minnesota	462	\$10.2 million	42
Mississippi	50	\$878,651	4
Missouri	368	\$8.7 million	40
Montana	40	\$965,098	4
Nebraska	219	\$3.6 million	14
Nevada	279	\$7.6 million	33
New Hampshire	2	\$44,590	N/A
New Jersey	922	\$24.5 million	110
New Mexico	172	\$4 million	16
New York	2,375	\$77 million	328
North Carolina	938	\$23.4 million	102
North Dakota	49	\$839,060	3
Ohio	1,053	\$24.4 million	108
Oklahoma	400	\$10.1 million	42
Oregon	654	\$19.2 million	79
Pennsylvania	595	\$17.6 million	84
Rhode Island	5	\$139,694	1
South Carolina	108	\$2.7 million	12
South Dakota	7	\$141,001	1
Tennessee	73	\$2.4 million	11
Texas	9,569	\$226.9 million	1,016
Utah	578	\$16.8 million	77
Vermont	18	\$890,079	4
Virginia	1,169	\$33.3 million	150
Washington	5,414	\$132.1 million	546
West Virginia	12	\$303,144	1
Wisconsin	478	\$10.5 million	45
Wyoming	168	\$3.7 million	14
Total	52,622	\$1.5 billion	6,620

International students studying at colleges and universities across the United States contribute **\$40.1 billion** to the U.S. economy and support **368,333 jobs**. The economic contributions of international students are in addition to the immeasurable academic and cultural value these students bring to our campuses and local communities. For more information, access NAFSA's *International Student Economic Value Tool* at www.nafsa.org/economicvalue.

CONTACT

Rachel Banks | rachel.banks@nafsa.org
Sr. Director, Public Policy & Legislative Strategy

NOTE: Enrollment and dollars total includes data from Puerto Rico and the U.S. Virgin Islands. They are not listed, as the U.S. Department of Commerce does not include them in the datasets used for our jobs analysis.

*Sources used in NAFSA's economic analysis for 2022-2023 Academic Year: U.S. Department of Education, U.S. Department of Commerce, and the *Open Doors* report.
† No community colleges reporting to *Open Doors* survey.