

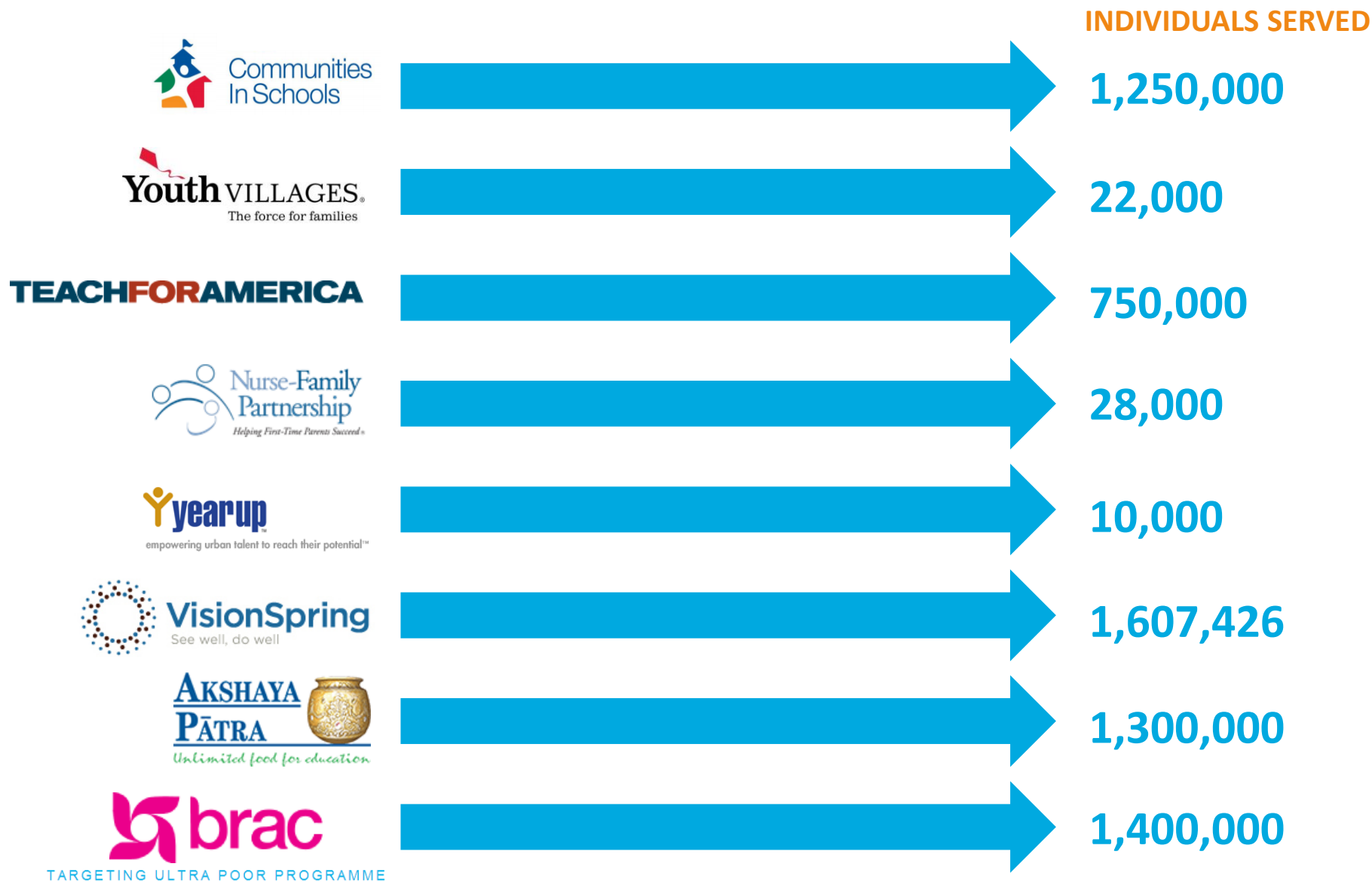


At the Frontier: Transformative Impact at Scale:

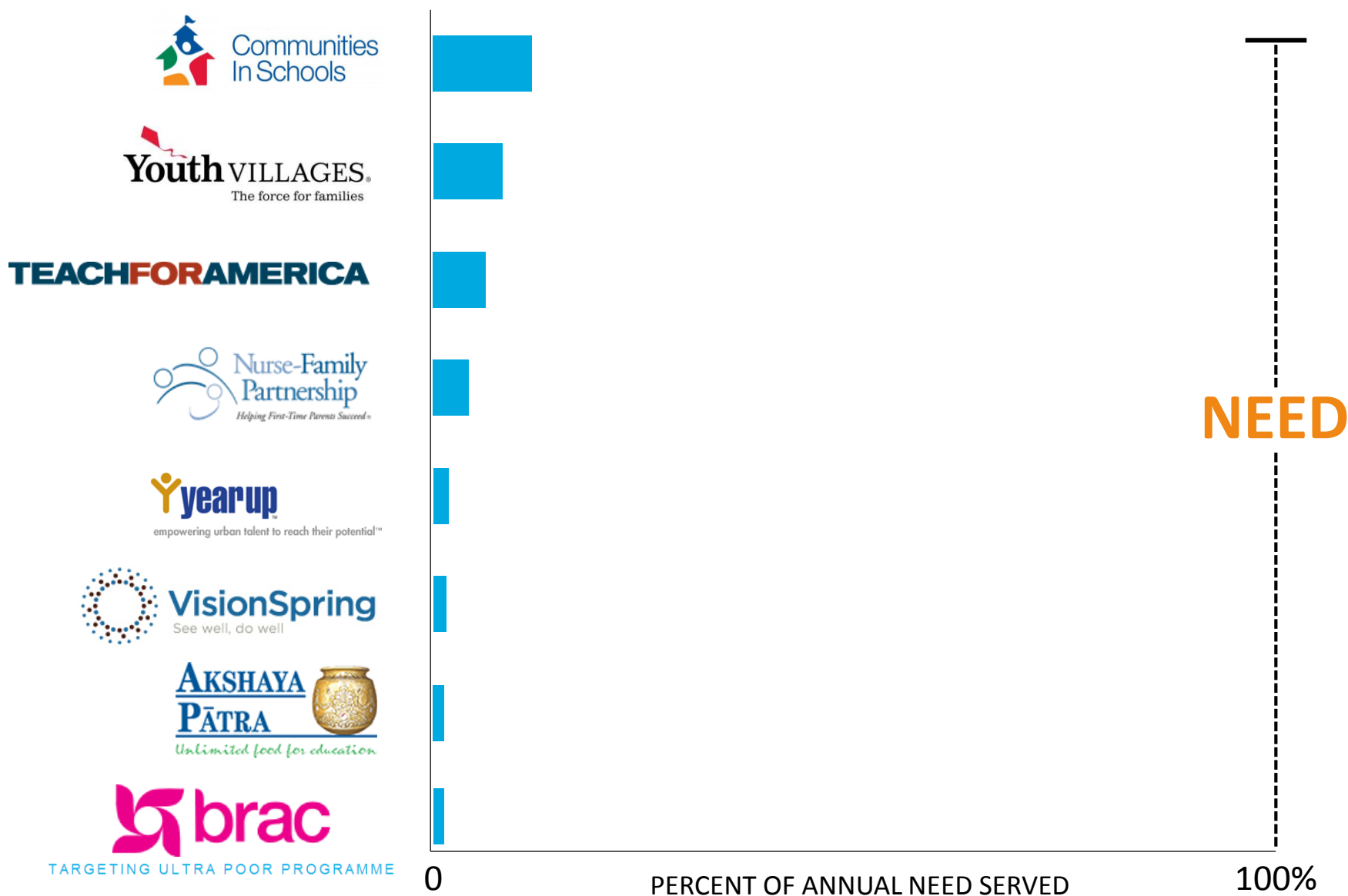
Jeri Eckhart-Queenan

Collaborating to accelerate social impact

An amazing decade of social entrepreneurship



Significant gap exists between impact and need



Leaders are experimenting with **nine pathways** to grow impact to a transformative impact at scale

Organization-centric Pathways

- Distribute through existing platforms
- Recruit & train other organizations
- Unbundle & scale for impact
- Leverage technology

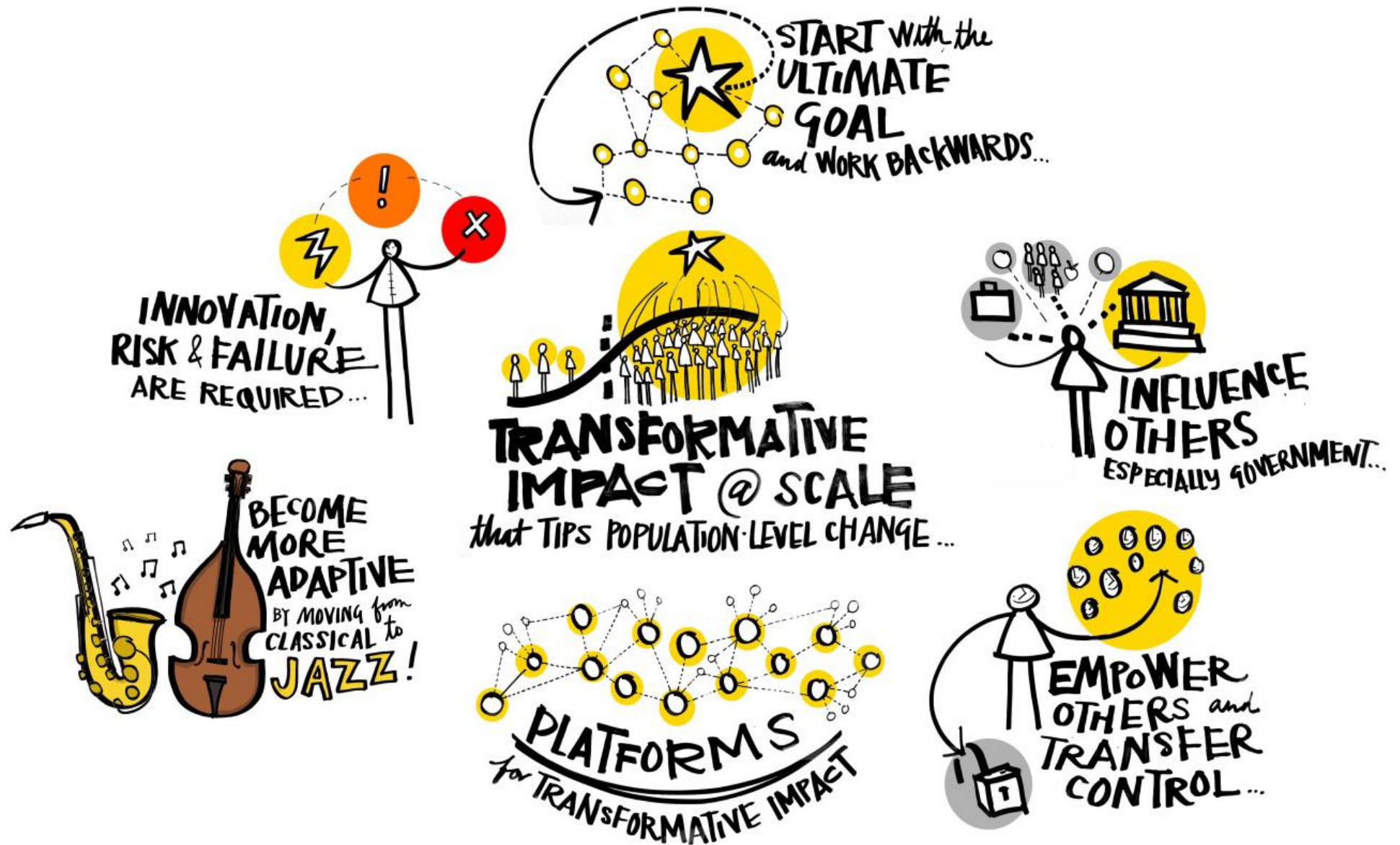
Field-building Pathways

- Strengthen a field
- Change public systems
- Influence policy change
- Consider for-profit models
- Alter attitudes, behaviors & norms

VisionSpring: Glasses could restore vision for 700M people, 90% of whom live in the developing world



Transformative Scale Convening, HBS, April 2015



Akshaya Patra: Nutritious midday meals improve educational attainment for 1.3M poor children per day



Join the conversation

TRANSFORMATIVE SCALE RESOURCE CENTER & BLOG

SSIReview.org/transformational_scale

Bridgespan.org/Transformational-Scale

NEWSLETTERS, ALERTS, TWITTER POSTS & RSS FEEDS

www.Bridgespan.org

CONTACT US

TransformationalScale@Bridgespan.org