

Academia's Untapped Opportunity to Reduce Inequalities

NAFSA Global Learning Colloquium
Philadelphia | May 30th, 2018



Keith Martin MD, PC
Executive Director
kmartin@cugh.org
@CUGHnews

Partnerships – Who Benefits?



Poorest-Richest Nations 2016

Poorest Nations

- Burundi (\$285.7)
- Malawi (\$300.8)
- Niger (\$363.2)
- Mozambique (\$382.1)
- CAR (\$382.2)
- Madagascar (\$401.3)
- Somalia (\$434.2)
- DRC (\$445.5)
- Liberia (\$455.4)
- Gambia (\$473.2)

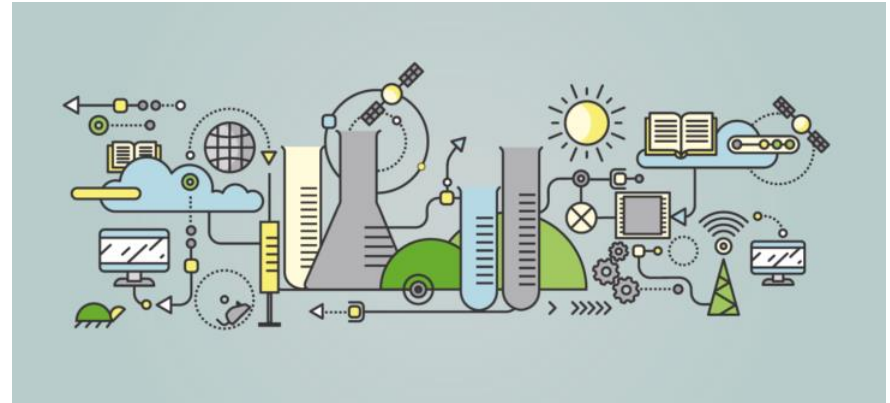
Richest Nations

- Luxembourg (\$102,831.3)
- Switzerland (\$78,812.7)
- Norway (\$70,812.5)
- Ireland (61,606.5)
- Iceland (59,976.9)
- Qatar (\$59,330.9)
- United States (57,466.8)
- Denmark (\$53,417.7)
- Singapore (\$52,960.7)
- Sweden (\$51,599.9)

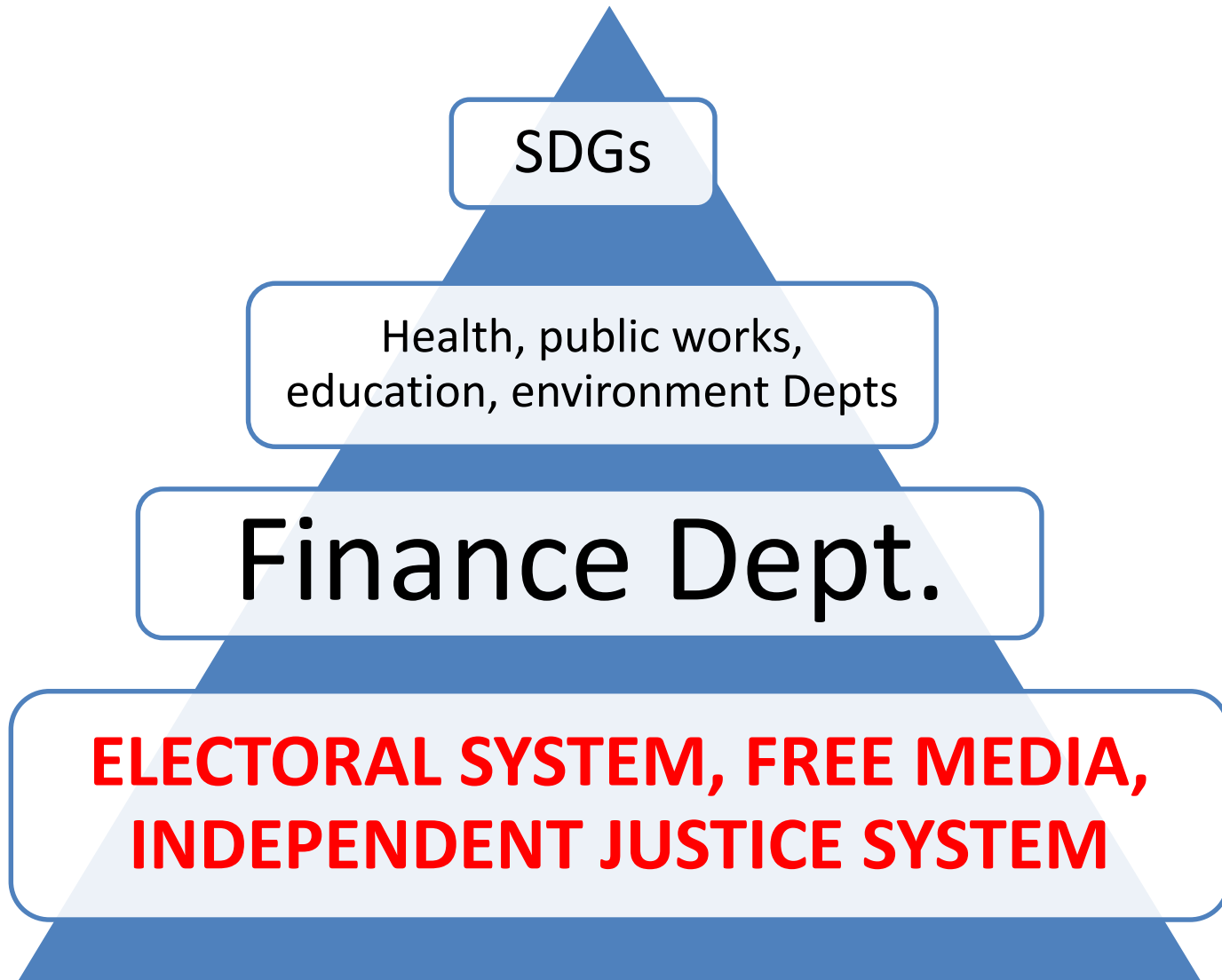
Source: World Bank (GDP per capita in USD)

The HIC-LIC Gap

- Human resources
- Infrastructure
- Access to material
- International Trade
- Allocation of resources
- **WEAK PUBLIC INSTITUTIONS**



Pyramid of Sustainable Development Needs



What Can We Do?

DO NO HARM

CREATE EQUITABLE PARTNERSHIPS

LIC benefits > HIC benefits

(DO NOT - come, experience/research, leave)

- HIC faculty provide training/ service if needed
- Share HIC curricula & access to HIC libraries
- Sponsor faculty & students to attend conferences
- Create bidirectional opportunities to train & share innovations
- LMIC researchers partner with HIC scientists

CUGH's Actions

CUGH has:

- Capacity Building Sub-committee- A. Dykens
- AFREhealth-CUGH working group
- Educational Products Sub-committee- L. Adams
- Working groups on Law, Oral Health, etc.
- All CUGH products are open access
- Listserv for mentoring- students & junior faculty
- Academic writing workshops with the Lancet Global Health
- Latest edition of the Annals of Global Health by African researchers

Guidelines for Equitable Partnerships -Research Fairness Initiative-COHRED

- Long term, sustainable, **relevant** benefits to local communities (as desired by the hosts)
- Early engagement of all partners
- Make the contributions & responsibilities from all partners explicit at the outset
- Strengthen local financial-contract management capacities if needed & requested
- Fair local hiring, training & sourcing
- Respect local authority of ethics review systems

Strengthen LIC Research Activities

- Provide Mentorship
- Provide opportunities to author & publish
- Dedicate space for LIC researchers to present at conferences
- Share research findings & assist in translation
- No equipment dumping



CUGH 2019 Conference March 7-10, Chicago

Translation & Implementation for Impact in GH

- Planning Committee- LMIC reps
- Dedicated space for LMICs to present
- Travel Scholarship for LMICs
- LMIC Representation on panels
- LIC issues- Satellites with AFREhealth-CUGH; Nursing, etc.
- CUGH Board LMIC representatives: Uganda, Sri Lanka, South Africa, Peru

The Delmar Divide- St. Louis



Structural Obstacles

- Poverty begets poverty
- Access to quality day care, & K-12 education
- Access to universities: the Ivy League Divide
- Social determinants of health- housing, judicial reform



What Universities can Do

- Strengthen the Pipeline- visits by Master's students to schools
- Student visits to universities-repeatedly
- Peer support
- Increase spots for poor/disadvantaged students
- Increase scholarships for poor students based upon need

Gaps in Academic Training and Most Important Skills Desired by Employers

EMPLOYED RESPONDENTS



RESPONDENTS, NOT EMPLOYED



Global Health Skills- Deficits

- Project design and implementation
- Communication & foreign language skills
- IT capabilities
- Team building
- Cultural sensitivity
- New Business Development
- Statistics
- Global Health Recent Graduate Study:
<https://www.cugh.org/announcements/global-health-recent-graduate-study-opportunities-and-obstacles-employment-global>

Overcoming Implementation Deficit Disorder

The public drives the political-GET POLITICAL





10th Annual Global Health Conference

Translation & Implementation for Impact in Global Health

March 8 to March 10, 2019 | Special Satellite Sessions March 7, 2019 | Hilton Chicago Hotel | Chicago, IL

Hosted by:



Center for
Global Health



Northwestern
University



UNIVERSIDAD PERUANA
CAYETANO HEREDIA

THE
UNIVERSITY OF
ILLINOIS
AT
CHICAGO
UIC

CUGH'S 10TH ANNUAL CONFERENCE Translation and Implementation for Impact in Global Health

March 7-10, 2019 | Chicago

Register, submit abstracts & panel proposals,
and more at: WWW.CUGH2019.ORG

Thank You



Keith Martin MD
Executive Director
kmartin@cugh.org

Twitter: [@keithmartinmd](https://twitter.com/keithmartinmd)
[@CUGHnews](https://twitter.com/CUGHnews)
www.cugh.org