

NAFSA

Region III and VII

BI-REGIONAL CONFERENCE 2012 OCT. 14 - 18

Puerto Rico

REGION III

Arkansas Louisiana Oklahoma Texas

REGION VII

Alabama Florida Georgia Mississippi Tennessee N. Carolina S. Carolina Puerto Rico U.S. Virgin Islands



NAFSA: Association of International Educators

Your International Office Medical Insurance & Assistance Questions Can Be Puzzling

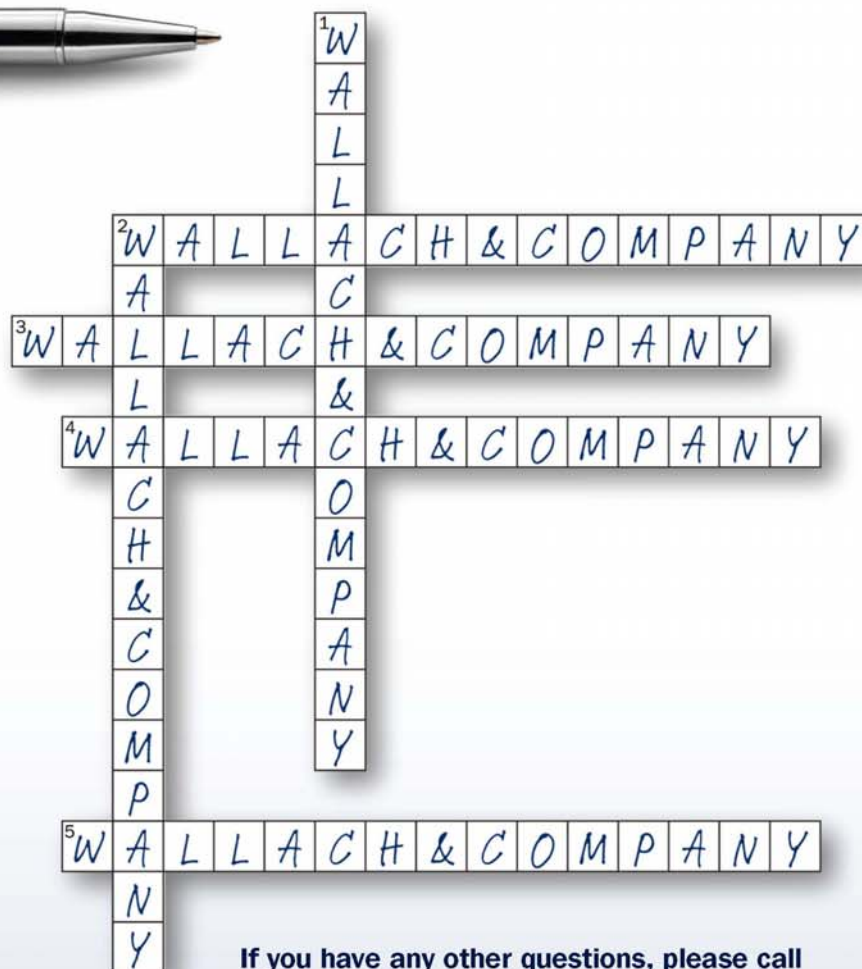


Across

2. Where can I get medical insurance for study abroad participants that includes a benefit for a parent to visit a student if they are hospitalized overseas?
3. Where can I get medical insurance for family and friends visiting international students at our campus?
4. If an older student or school advisor is involved in a study abroad program, where can they get medical insurance and assistance?
5. If one of our office staff is going to live abroad with their family for a year, where can they get medical insurance & assistance?

Down

1. If we have foreign professors visiting our campus for a couple of weeks, where should we direct them for medical insurance?
2. What medical insurance & assistance program includes assistance for finding a doctor or legal help and is available 24/7 with multi-lingual speaking advisors?



If you have any other questions, please call or email Wallach & Company.

Enrollment is available on-line. The I.D. card, certificate of insurance and assistance brochure will be returned by email.

**Wallach
& COMPANY, INC.**

107 West Federal Street
P.O. Box 480
Middleburg, Virginia 20118
(800) 237-6615
info@wallach.com
www.wallach.com

TABLE OF CONTENTS

Welcome	4
Conference Services & Information	6
All Conference Dinner & Closing Celebration	7
About NAFSA	8
Past Regional Chairs	10
Passport Project	10
Floor Plan—Sheraton Hotel Meeting Space	11
Floor Plans—Puerto Rico Convention Center (PRCC)	12
Conference Schedule	14-18
NAFSA Guests	19
Regional Travel Grant Recipients	19
Session Descriptions	20-35
Poster Fair Presentations	36-38
Exhibitors, Advertisers, and Sponsors	39-40
Puerto Rico Local Team	40
Region III Team Members	42
Region VII Team Members	43
Regional NAFSAns Serving in National Positions	44



WELCOME FROM THE CHAIRS

Dear Colleagues,

Welcome to NAFSA's Bi-Regional Conference at the Puerto Rico Convention Center here in beautiful San Juan! This international destination within the U.S. boasts a beautiful history and culture, and is home to a wonderful group of people who are eager to welcome NAFSAns for the first time.



We are excited for Region III and Region VII folks to gather as friends and colleagues, and to create new networking and professional development opportunities. Everyone involved in the planning process is confident that new friendships will be forged as colleagues from universities and institutions from all eleven states, Puerto Rico, and the Virgin Islands get a chance to learn more about one another and to share their passion of advancing international education.

When the idea of bringing a conference to Puerto Rico was presented, there was no doubt that our regional members would experience a most satisfying educational conference while engaging in a rich cultural adventure that perhaps only those who travel abroad get to enjoy. Both the Chairs and the wonderful regional team members cannot express enough gratitude for your participation, and we want to assure you that this will be a most unique and rewarding professional development opportunity.

This year's conference provides a broad scope of sessions targeting all of our Knowledge Communities, and affords you, the attendee, with opportunities to gain valuable resources and knowledge. We hope you will leave not only with a better appreciation for this beautiful location, but also with new friendships, ideas, and information to make you a stronger advocate for international education back on your campus.

Regions III & VII are honored to feature special guests and sponsors, for whom we are very thankful. Don't miss the opportunity to learn more about Puerto Rico by attending 'Puerto Rico 101: An Introduction to the Island,' as well as participate in our terrific Closing Celebration at El Casino in Old San Juan, which features a menu of Puerto Rican specialties and a special performance of 'Los Pleneros.' The plenary luncheon will also deliver a great opportunity to enjoy Puerto Rican culture with a presentation by the Ballet Folklórico Guamanique de Puerto Rico.

We both want to express our tremendous gratitude to every single person who has made this conference possible. It has been an extremely rewarding experience to bring this event to you, and we certainly hope you enjoy every second of it. Special thanks go to our conference planners, Sue Marlay and Sylvia Shortt, the entire Region III and VII leadership teams, and of course to Dr. Aida Castañer-Martinez, Puerto Rico Representative to Region VII and Local Arrangements Chair. Thanks to all of you for the amazing effort and inspirational teamwork!

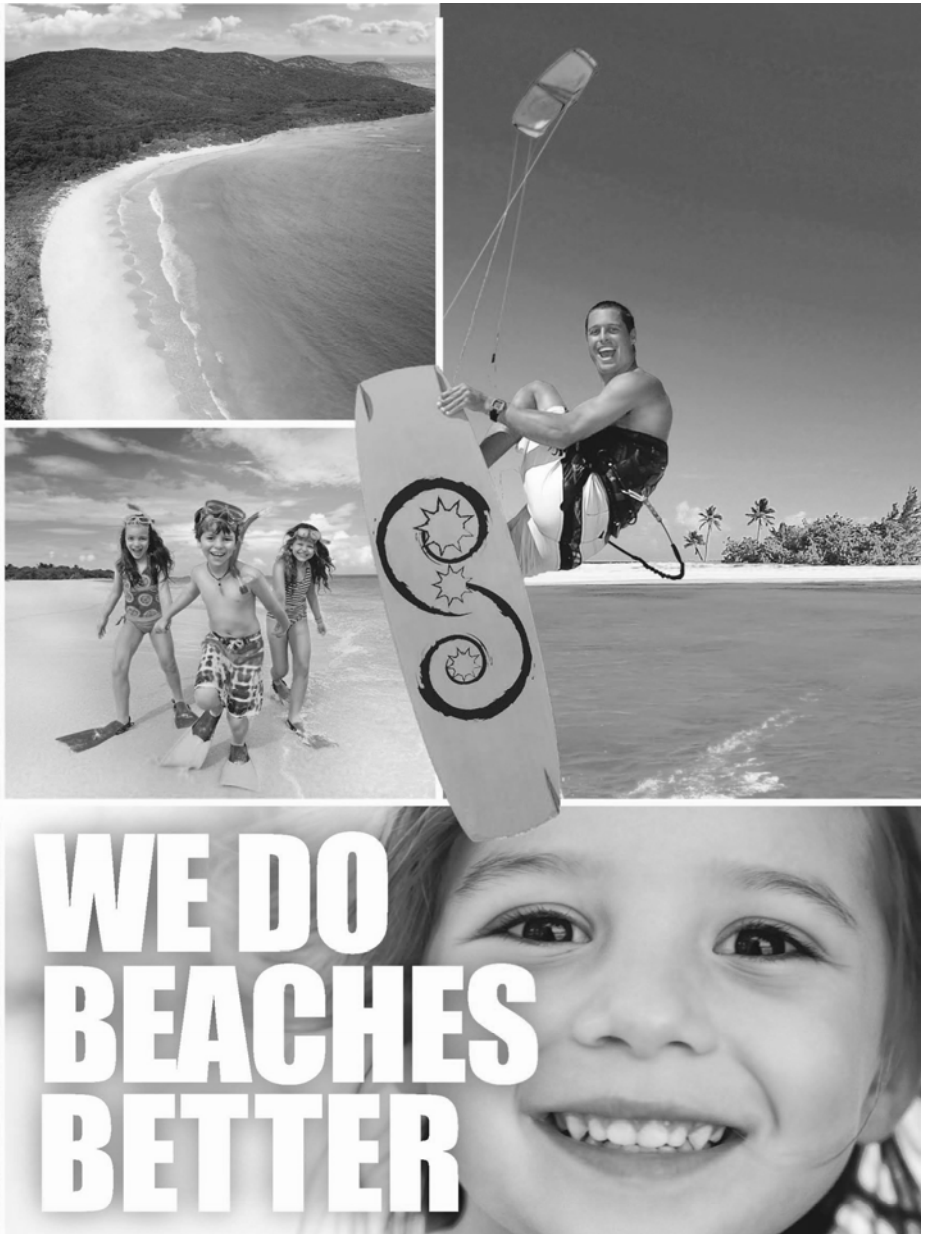
Bienvenidos a San Juan, Puerto Rico! Esperemos que sea una experiencia inolvidable.

Gracias,

Claudia Graves
Chair, Region III

Heather Housley
Chair, Region VII

PUERTO RICO



**WE DO
BEACHES
BETTER**

Flamenco Beach: we think it's the most beautiful beach in the world. Make it an adventure and explore the famous crescent-shaped beach on the island of Culebra, just 25 miles offshore.

We have more than 300 beaches to choose from. Just think, tomorrow morning you could be swimming in the warm Caribbean and, in the afternoon, scuba diving in the Atlantic...where pirates once sailed.

For over 500 years, people have come to Puerto Rico to discover, explore, and create memories.

It's about time you discovered why...



Book your next vacation now at

seepuertorico.com



©2012 Puerto Rico Tourism Company. DEDC. Government of Puerto Rico. Approved by the State Electoral Commission CEE-SA-12-1466.

CONFERENCE SERVICES & INFORMATION

Conference Registration Hours

Second Floor, PRCC

Sunday, October 14	7:30AM—6:00PM
Monday, October 15	9:00AM—5:00PM
Tuesday, October 16	8:00AM—12:30PM
Wednesday, October 17	8:00AM—10:45AM

Tickets

The only conference event that requires a ticket for entrance is the All Conference Dinner & Closing Celebration. Tickets for this event for all registered conference participants are included in your registration packet.

Registered conference participants do NOT need tickets to attend the opening reception, plenary luncheon, or business lunch. Refreshments offered during session breaks are also available to all conference participants.

Extra tickets for special events may be purchased on a space available basis at the Registration Desk. Please visit the Registration Desk as well if you have lost a ticket.

Name Badges

For security reasons, all conference participants are required to wear name badges for admission to all sessions, events, and the Exhibit Hall. Name badges are provided in your registration packet.

Hospitality Table

The hospitality table is located on the second floor foyer of the PRCC. Here you can get information about restaurants and local attractions, pick up an area map, or get insider tips from our Puerto Rico colleagues.

Exhibit Hall Hours & Information

Third Floor Foyer, PRCC

Tuesday, October 16	8:30AM—2:30PM
Wednesday, October 17	9:00AM—4:30PM

The Exhibit Hall Grand Opening takes place Tuesday morning from 9:45AM-11:15AM alongside the Coffee Break and Poster Fair. The Exhibit Hall is a great place to discover new products and services, meet colleagues from our regions, see old friends, and refresh before your next session.

Please be sure to participate in the Passport Project in the Exhibit Hall, through which you can enter to win one of two Kindles. You'll need to fill your 'passport' with stamps by visiting all our exhibitors' tables.

Schedule Changes

Any schedule changes can be found each day at the Registration Desk. Please visit the Registration area for the most up-to-date information about events of the day, session changes and other conference news.

Raffle

Please take all raffle items to the Raffle Table inside the Exhibit Hall starting Tuesday morning, October 16. Conference participants will be able to buy tickets for the raffle at that location during each coffee break and while the Exhibit Hall is open. Winners will be announced at each coffee break, and the winner of the grand prize (an iPad!) will be announced at the Business Meeting & Luncheon.

Newcomer Orientation

Region III and VII continue to grow each year and we are always excited to meet the new faces among us at our conferences. If you are a newcomer to the conference or the region, you are invited to attend the Newcomers' Orientation on Monday from 2:00-3:15PM in the Sheraton Hotel's Miramar Ballroom. You will meet Region III and VII leaders, learn about your region and how to be involved in NAFSA on the state, regional and national levels. We will also have a fun activity that you will not want to miss!

No-Smoking Policy

Our biregional conference offers conference participants a smoke-free environment. The entire Sheraton Puerto Rico Hotel & Casino is smoke-free, including the balconies, restaurants and the casino. Both the Puerto Rico Convention Center and El Casino, the location for the Closing Celebration, are non-smoking buildings. Please refrain from smoking anywhere in the hotel, in the convention center and at El Casino. Smoking is only allowed across the main entrance to the Convention Center next to the fountain, and in the gardens at El Casino.

Internet Services, Printing and Copying

The Sheraton Puerto Rico Hotel & Casino offers free wireless high-speed Internet access in all guest rooms and public areas. There is a 24-hour business center on the 2nd floor of the hotel. The Puerto Rico Convention Center's on-site business center is located in the lobby of the Convention Center. Its hours of operation are Monday through Friday, 9:00AM to 5:00PM. Services and products include printing, copying and fax transmission and receipt.

Evaluation Forms

At the end of each session, please take a few moments to complete the individual session evaluation forms. Your evaluations will assist the regional teams to nominate sessions to be presented at the NAFSA national conference in St. Louis in May 2013.

In addition, the Region III and VII teams will be sending you an all-conference evaluation form via email after the conference. Your feedback on this evaluation is vital as we strive each year to improve the conference and its educational offerings.

ALL CONFERENCE DINNER & CLOSING CELEBRATION!

**DON'T
MISS IT!**

DATE: Wednesday, Oct. 17

TIME: 6:00PM-10:30PM

WHERE: El Casino in
Old San Juan

This year's all conference dinner and closing event will be held at the Antiguo Casino de Puerto Rico, a marvelous building in Old San Juan, distinguished by its Spanish and French design. Built in 1917, it now serves as the reception center for the government of Puerto Rico, and is located at the original Puerto de Santiago (Door of Santiago) or Puerto de Tierra (Earth Door) of the city, where it provided unique access to San Juan through the defense walls that surrounded it.

You will be treated to a Fiesta Puertorriqueña, a lavish dinner of traditional Puerto Rican and vegetarian specialties, salad and desserts. Bring your dancing shoes, as a live band will play throughout the evening, highlighted by a traditional *pleneros* performance.

TIMELINE:

6:00-6:45PM	Buses leave from the entrance to the PRCC
6:30-7:00PM	Happy Hour: Appetizers, Rums of Puerto Rico, music DJ
7:00PM	Welcome from the hosts and sponsors
7:15-8:30PM	Dinner, live music and dancing
8:30-9:00PM	Performance of the Pleneros (join in!)
9:00-10:30PM	Live music and dancing
8:30-10:30PM	Bus departures from el Casino to the PRCC

TRANSPORTATION:

Buses will leave from the PRCC entrance starting at 6:00pm. Departures will start at 8:30PM, with the last bus leaving at 10:30PM.

TICKETS: *Participants must present your event ticket for entrance! Your **FREE** ticket is included in your registration packet.*

SPONSORS:

**PUERTO RICO
DOES IT BETTER**

seepuertorico.com®



Santander



**SEE YOU
THERE!**

ABOUT NAFSA

NAFSA: Association of International Educators is a member organization promoting international education and providing professional development opportunities to the field. NAFSA serves its members, their institutions and organizations, and others engaged in international education and exchange and global workforce development. The association has three major foci: Creating and disseminating knowledge; influencing public policy; and maintaining a strong association. Hundreds of NAFSA members volunteer to serve the Association. NAFSA's membership in the United States is organized into eleven geographic regions, which provide the all-important grassroots strength of the association. Further information may be found at www.nafsa.org.

Knowledge Communities and Networks

Discover new ideas, practice resources, relevant training and events, and the latest news about your particular professional area. Seek advice or share your thoughts by participating in NAFSA's sixteen Professional Networks and two Special Focus Networks sponsored by NAFSA's five Knowledge Communities. The five Knowledge Communities and corresponding networks are:

Education Abroad (EA)

Special Focus: Simon Act Initiatives
Advising and Recruitment in Education Abroad
Developing and Managing Programs Abroad
Managing an Education Abroad Office

International Enrollment Management (IEM)

Special Focus Network: Bologna Process
Admissions and Credential Evaluation Network
English Language Teaching & Administration Network
Marketing and Recruiting Network
Overseas Educational Advising Network
Sponsored Program Administration Network

International Student and Scholar Services (ISSS)

International Student Advising Network
International Scholar Advising Network
Campus and Community Programming Network

Teaching, Learning, and Scholarship (TLS)

Research/Scholarship Network
Intercultural Training and Communication Network
Internationalizing the Curriculum and Campus Network

International Education Leadership (IEL)

Senior International Officer Network
International Education Leader Development Network

Member Interest Groups

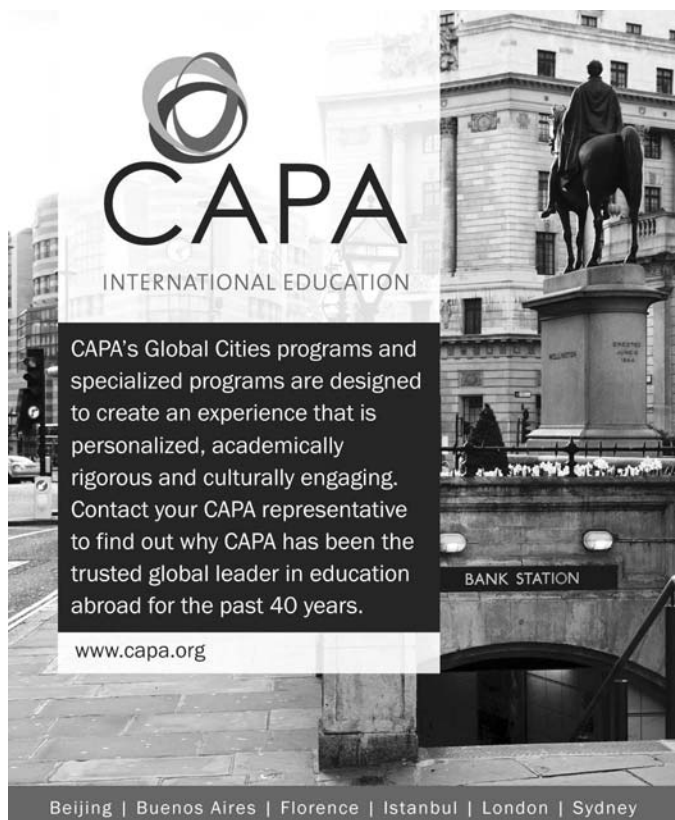
Join other NAFSA members who share a specific interest or at a similar institution related to international education. NAFSA offers 24 Member Interest Groups (MIGs) to promote the sharing of information and experience among members throughout the association. To learn more and to sign up visit www.nafsa.org/migs.

Mission

NAFSA is an association of individuals worldwide advancing international education and exchange and global work force development. NAFSA serves international educators and their institutions and organizations by establishing principles of good practice, providing training and professional development opportunities, providing networking opportunities, and advocating for international education.

Vision

NAFSA's members share a belief that international education advances learning and scholarship, builds understanding and respect among different peoples, and enhances constructive leadership in the global community. We believe that international education by its nature is fundamental to fostering peace, security, and well-being.



CAPA
INTERNATIONAL EDUCATION

CAPA's Global Cities programs and specialized programs are designed to create an experience that is personalized, academically rigorous and culturally engaging. Contact your CAPA representative to find out why CAPA has been the trusted global leader in education abroad for the past 40 years.

www.capa.org

Beijing | Buenos Aires | Florence | Istanbul | London | Sydney

Affordable.
Flexible.
Comprehensive.
Customizable.

ISP proudly presents our full lineup of **health insurance plans** for international students and scholars studying in the US and US students studying abroad.

Featuring:

- Sports Coverage*
- Trip Interruption and Lost Baggage Coverage*
- Easy Online Enrollment and Claims Tracking
- Low Monthly Rates
- Low Deductibles at Student Health Centers
- No Pre-Existing Condition Exclusion*
- Meets F1/J1 Visa Requirements

* Only applies to the Pioneer and Adventure Programs



Call us or visit our website
today to find out which plan
is right for your students:

1.877.738.5787

intlstudentprotection.com

Ask us how we can **customize**
a plan to fit your students' needs.



PAST REGIONAL CHAIRS

REGION III

2011 Glenn Freeman
Samantha Slaight, acting chair
2010 Samantha Slaight
2009 Olga Grieco
2008 Robert Crosier
2007 Adria Baker
2006 Julie Sinclair
2005 Dan Erickson
2004 Michele Stelljes
2003 Brenda Robati
2002 Anita Gaines
2001 Michael Freeman
2000 Robert Watkins
1999 Rebecca Crowell
1998 Regina Henry

1997 Sue Marlay
1996 Beverly Heyen
1995 Linda Jahn
1994 Jean Ringer
1993 Jane Dunham
1992 Mary Ann Kelly
1991 Rose Mary Valencia
1990 Bill Lennon
1989 Sandy Slattery
1988 Patricia Lazo
1987 Millie Audas
1986 Tom Hoemeke
1985 Leroy Broussard
1984 Al Mladenka
1983 Judy Young

1982 Michael Fels
1981 Michael Fels
1980 Jacob Koehl
1979 Jacob Koehl
1978 Charles Aanenson
1977 Lucy Keller
1976 Inge Jordahn
1975 Douglas Wilson
1974 Henry Akins
1973 Margie Kidd
1972 Louis Schwartz
1971 Leo Bailey
1970 Erin Schmidt
1969 Turner Blount &
John Hartshorne

1968 Michael Kamis
1967 Robert Melcher
1966 Gail Martin
1965 Tom Stover
1964 Edward Bitar
1963 Walter Allen
1962 Edith Sidwell
1961 Samuel McNeely
1960 Norman McNeil
1959 J. Frank Davis
1958 Gene Russell
1957 Samuel McNeely
1956 James Wyatt
1955 Joe Neal
1954 Dr. Farington, host

REGION VII

2011 Jeff Hutcheson
2010 Brad Sekulich
2009 Maynard V. Odom
2008 S. Scott King
2007 Nancy Wells
2006 Douglas F. Podoll
2005 Katherine Owen Richardson
2004 Dan Paracka
2003 David Austell
2002 Brenda Hinson
2001 Louis Bregger

2000 Lelia Crawford
1999 Bill Rich
1998 Martha Trigonis
1997 Bill Tetz
1996 John Eaves
1995 Carol Argo
1994 Jennifer Lund
1993 Betty Craveb
1992 Judy Judd Price
1991 Deborah Ahlstedt
1990 Lorraine Aun

1989 Catheryn Cotton
1988 Judith Green
1987 Steve Weisbrod
1986 Garland Davies
1985 Helen Stevens
1984 John Rogers
1983 Elizabeth Perex Riley
1982 Jeana McKinney
1981 Heather Olsen
1980 Dick Downie
1979 Jill Stritter Dinwiddie

1978 Marian Beane
1977 Richard Reiff
1976 David Hempleman
1975 Ann Graves
1974 Joseph Busta
1973 Edward Ferguson
1972 Ed Gibson
1971 Ruth McGraken
1970 Nolan Shepherd
1969 Bill Byerts/Robin Fuller



- **Reduces evaluation workload in your office**
- **Turnaround time of one week for admission offices**
- **Competitive pricing passed on to the applicant**
- **Over 75 years of combined senior evaluator experience**
- **Offices in Texas, Virginia, Mississippi**
- **Member of National Association of Credential Evaluation Services, (NACES®)**



www.gceus.com • gce@gceus.com

1-800-707-0979

PASSPORT PROJECT

As you visit our vendors in the Exhibit Hall, ask each of them to stamp a "visa" in the designated space in your conference passport (provided in your registration packet). Before the drawing at the last coffee break on Wednesday from 3:45-4:15PM, drop your completed passport in the box provided at the Raffle Table. Only passports that have a stamp from each exhibitor will be eligible and entered in a drawing to win one of two Kindle Fires.

The drawing will be held at the
Final Coffee Break

Wednesday afternoon, October 17,
and ***you must be present to win.***

NAFSA regional team members and exhibitors are ineligible to enter the Passport Project.

SHERATON HOTEL FLOOR PLAN—SECOND FLOOR

All conference sessions and events held at the Sheraton will be on the second floor of the facility. No events will take place on the other floors.



SECOND FLOOR



SIT Study Abroad

a program of World Learning

Field-based summer, semester, and academic year study abroad programs in more than 40 countries focused on critical global issues.

SIT now matches funding for all students receiving a Federal Pell Grant.

Visit the SIT booth in the exhibit hall.



Learn more:

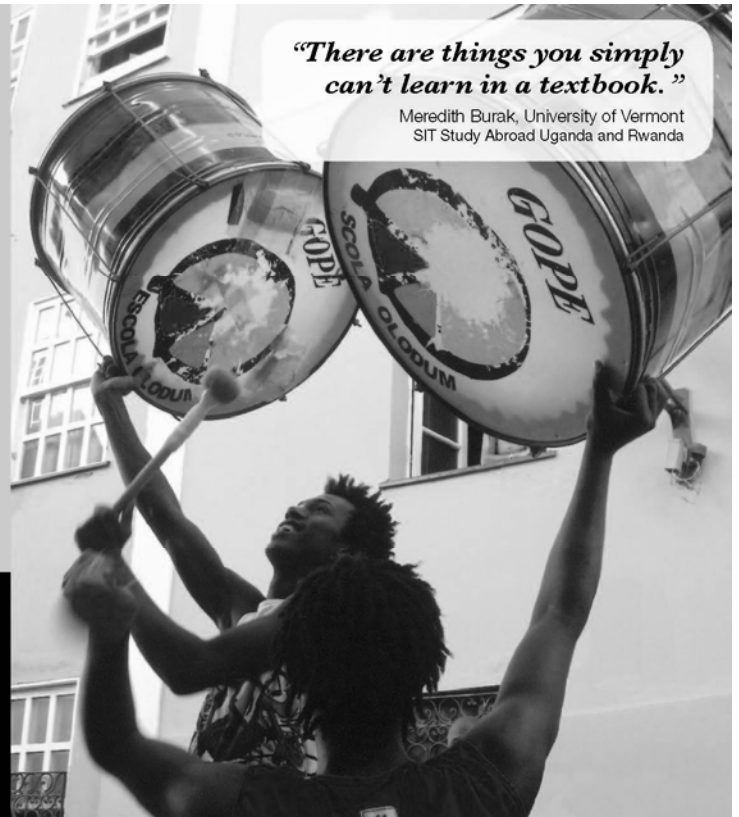
1-888-272-7881

studyabroad@sit.edu

www.sit.edu/studyabroad

"There are things you simply can't learn in a textbook."

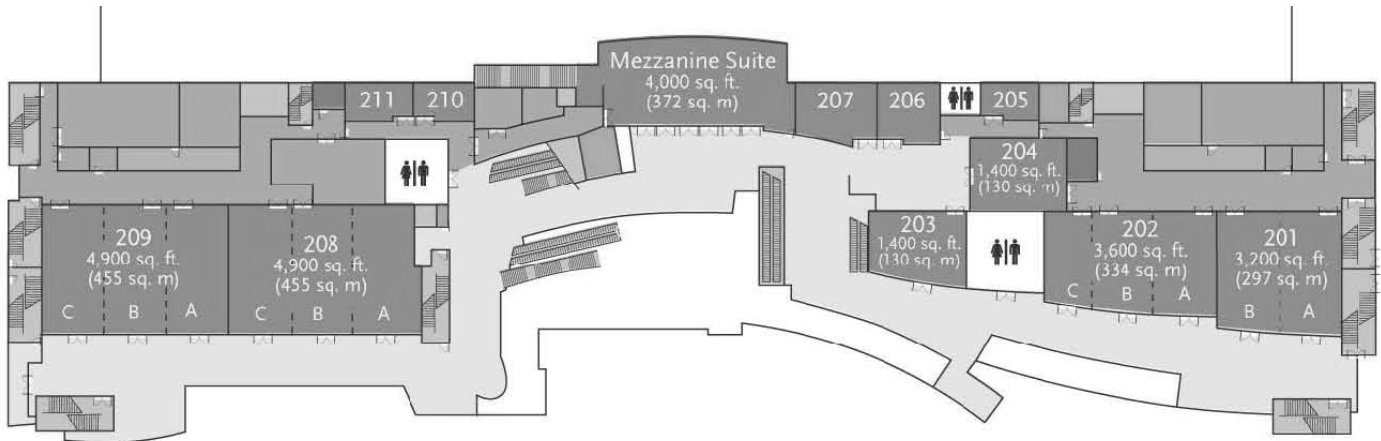
Meredith Burak, University of Vermont
SIT Study Abroad Uganda and Rwanda



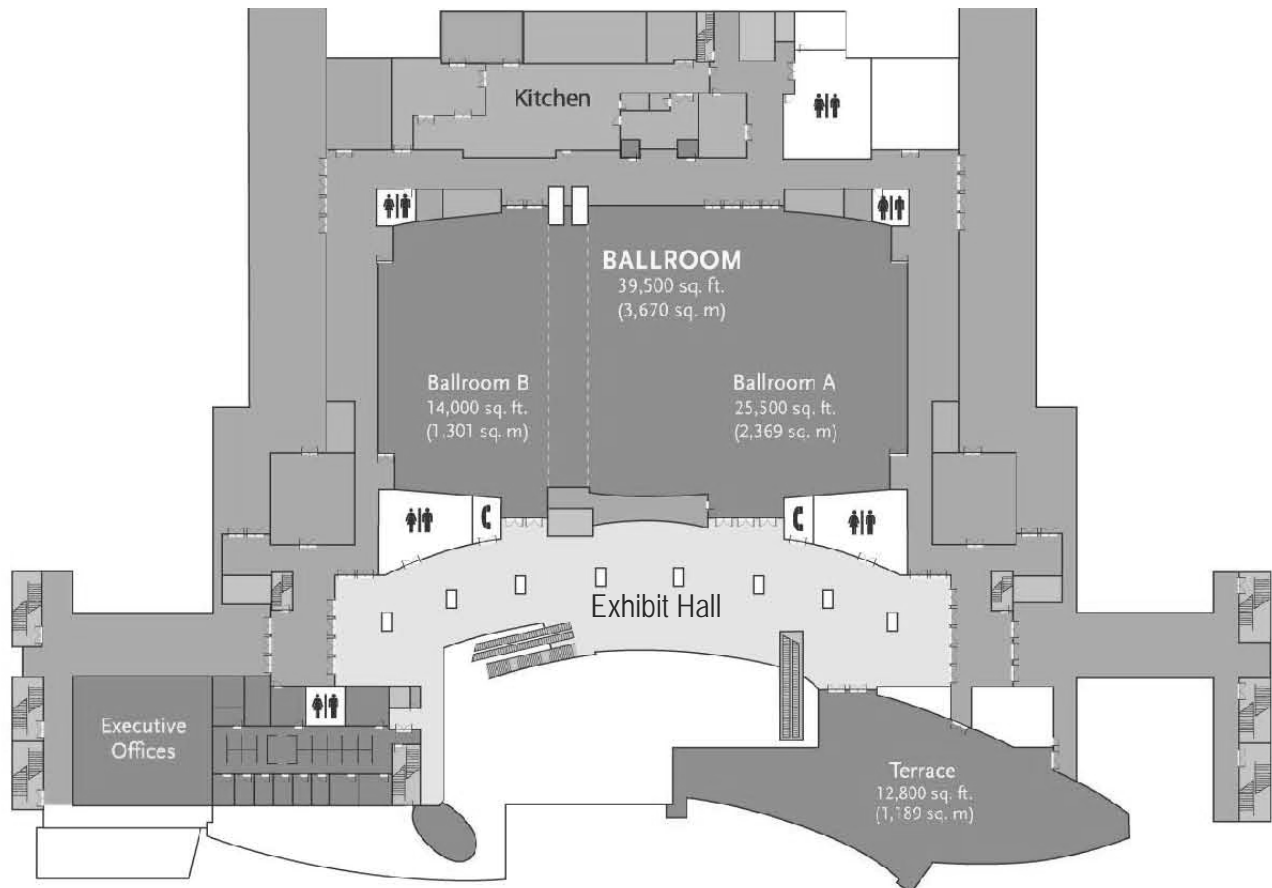
PUERTO RICO CONVENTION CENTER (PRCC) FLOOR PLANS

All conference sessions and events held at the PRCC will be on the second or third floor of the facility. No events will take place on the first floor.

PRCC—SECOND FLOOR



PRCC—THIRD FLOOR



The world of international education
will meet in St. Louis, May 26-31, 2013.

Will you be there?

One week, one location, endless possibilities:

- ◆ Connect and engage
- ◆ Discover solutions
- ◆ Be inspired and challenged
- ◆ And so much more...

But you have to be there to experience it.

MARK YOUR CALENDAR NOW!

Learn more at www.nafsa.org/stlouis3

NAFSA 2013 ANNUAL CONFERENCE & EXPO

MAY 26-31, 2013 ◆ ST. LOUIS, MISSOURI ◆ USA



NAFSA
Association of
International Educators

CONFERENCE SCHEDULE

SUNDAY, OCTOBER 14

<u>Time</u>	<u>Event</u>	<u>Location</u>
7:30AM-6:00PM	Conference Registration	2 nd floor PRCC
9:00AM-6:00PM	Foreign Educational Credential Analysis Workshop	205
1:00-6:00PM	Pre-conference Workshops:	
	J-1 Advising for Beginners	201A
	F-1 Student Advising for Beginners	201B
	F-1 Student Advising: Intermediate	202A
	Risk Management and Support Services for Overseas Programs	202B
	Fundamentals of Intercultural Communication	202C
2:00-6:00PM	Health & Safety in Education Abroad	206
3:00-6:30PM	Hospitality Table	2 nd floor PRCC
4:00-8:00PM	Regional Leadership Team Meeting	Sheraton, San Cristobal

MONDAY, OCTOBER 15

<u>Time</u>	<u>Event</u>	<u>Location</u>
8:00AM-1:00PM	Optional local tours (participants must arrange on their own)	Hospitality Table
8:30-11:30AM	Fundamentals of Intercultural Communication – Part 2	202C
8:30AM-12:30PM	Pre-conference Workshops – Part 2:	
	Foreign Educational Credential Analysis	205
	J-1 Advising for Beginners	201A
	F-1 Student Advising for Beginners	201B
	F-1 Student Advising: Intermediate	202A
	Risk Management and Support Services for Overseas Programs	202B
8:30AM-4:30PM	Hospitality Table	2 nd floor PRCC
9AM-Noon	Regional Leadership Team Meeting	Sheraton, San Cristobal
9:00AM-5:00PM	Conference Registration	2 nd floor PRCC
2:00-5:00PM	Exhibit Hall Set-up	3 rd floor foyer PRCC
2:00-3:15PM	Newcomers' Orientation Sponsored by Academic HealthPlans Inc.	Sheraton, Miramar Ballroom
2:00-3:15PM	Puerto Rico 101: An Introduction to the Island	203
3:30-4:45PM	<u>Session Block #1:</u>	
	Immigration Topics & Regulations: A Dialogue on Immigration in Puerto Rico	208C
	OPT in All Its Glory—The Ins and Outs	209
	Semester-Long J-1 Exchange Student Orientation	202B
	Going "All In" to Market Faculty-Led Programs	208B
	Recruit, Retain, Refer—Simple Surefire Steps to Mastering the Three R's of Successful Student Recruitment	202A
	Evaluating the Evaluator	208A
	A Recipe for Strategic Partnerships: How to Maximize Impact on Your Campus	203
	Introduction to Pinterest and its International Education Applications	204
	Challenges, Benefits & Suggestions of Hosting SACM Sponsored F-1 Students	201B

CONFERENCE SCHEDULE

MONDAY, OCTOBER 15 (CONT.)

<u>Time</u>	<u>Event</u>	<u>Location</u>
5:00-7:00PM	Opening Reception on the PRCC Terrace Meet friends old & new while enjoying food, live music, and a fabulous view! Sponsored by ELS Language Centers.	PRCC Terrace (3 rd floor)
7:00PM	Dinner and Exploration in San Juan on your own	

TUESDAY, OCTOBER 16

<u>Time</u>	<u>Event</u>	<u>Location</u>
7:15-8:15AM	MIG/SIG Breakfast Meetings at the Sheraton: <ul style="list-style-type: none"> Christian SIG Black/Multicultural Professionals in International Education SIG 	Sheraton: San Cristobal San Geronimo
8:00AM-12:30PM	Conference Registration	2 nd floor PRCC
8:30AM-2:30PM	Exhibit Hall Open	3 rd floor foyer
8:30-9:45AM	<u>Session Block #2:</u>	
	Consular Affairs Update	209
	Out of the World Aliens! Case Processing Updates and Tactical Strategies for Outstanding Researchers, Professors and Scholars	208C
	Programming Ideas to Celebrate International Education Week	202B
	Show Me the Money: Best Practices in Study Abroad Scholarship Advising	208B
	Designing Effective Pre/Post International Experience Assessment Tools	202A
	Online Marketing and Lead Generation—Is It Right for You?	208A
	Website Usability: How User-Friendly Is Your Website?	203
	The Role of Community and Technical Colleges in Promoting International Education	201A
	Exploring Global Leadership in International Education	201B
9:45-11:15AM	Exhibit Hall Grand Opening & Coffee Break Poster Fair (See pages 36-38 for a list of poster presentations.) Sponsored by T.W. Lord & Associates	3 rd floor PRCC & Ballroom B
11:15AM-12:30PM	<u>Session Block #3:</u>	
	CTCEU and You	209
	To Complete or Not Complete: Graduation & End-of-Program Reporting	208C
	Incoming Exchange Student Management—Tips & Tricks	202B
	Warnings, Waivers, Wanderlust: Balancing Risk Management with Students' Expectations	208B
	International Activities of AACRAO: Collaborating with Colleagues in Registrars' and Admissions Offices	202A
	Re-Defining the Enrollment Funnel	208A
	Creating an Intentional, Interdepartmental International Living Learning Community	203
	Finding Your Place in NAFSA Leadership	206
	Study Abroad's Impact on Female Identity Development	201B
12:30-2:30PM	Plenary Luncheon Special cultural performance by Ballet Folklórico Guamanique de Puerto Rico Sponsored by: Global Credential Evaluators	Ballroom A (3 rd floor PRCC)
3:00PM	Exploration and Dinner in Old San Juan (On your own)	

CONFERENCE SCHEDULE

WEDNESDAY, OCTOBER 17

<u>Time</u>	<u>Event</u>	<u>Location</u>
7:15-8:45AM	ISEP Network Breakfast Meeting at the Sheraton	San Geronimo
7:45-8:45AM	MIG/SIG Breakfast Meetings at the Sheraton: • Rainbow SIG Region III Past Chairs' Breakfast	Sheraton: San Cristobal Sol Boardroom
8:00-10:45AM	Conference Registration	2 nd floor PRCC
9:00AM-4:30PM	Exhibit Hall Open	3 rd floor foyer
9:00-10:15AM	<u>Session Block #4:</u>	
	Recertification: Highlights and Issues	209
	PERM for College Teachers: Special Handling or Special Problems?	201A
	Fostering Relationships between US and International Students to Develop Globally Competent Leaders	202B
	Engaging Students in Orientation: Tools to Satisfy a Variety of Learning Styles	208B
	US IEP Accreditation and the December 2010 Law: Consequences, Means, and Gentle Suggestions	202A
	Credentials from Brazil, Cuba, Mexico, & Puerto Rico: Characteristics & Updates	208A
	Student Immigration 101 for Professionals Outside of International Advising	208C
	Diversity Training for Office Volunteers	203
	Making Meaning of the American Student—Spanish Host Family Experience	201B
	International Teaching Assistants: Institutional Support at Top Research Universities	206
10:15-10:45AM	Coffee Break in Exhibit Hall Buy tickets for the raffle! Grand prize (iPad) sponsored by HTH Worldwide.	3 rd floor foyer
10:45AM-Noon	<u>Session Block #5:</u>	
	Joint Government Panel	209
	(Venezuelan) CADIVI Letters: Complications and Resolutions	206
	They Have Arrived! Now What? Best Practices for Coordinating a Successful Orientation Season	202B
	They Speak English, Too! So How Different Can It Be? Advising on Differences in Academic Cultures	208B
	First Do No Harm—Exploring Impact of Experiential Learning on Host Communities	202A
	IELTS in the US and Beyond: A Truly Global Experience	208A
	Views from Two Sides of the Fulbright International Education Administrator (IEA) Program: The Host Institution and the Fulbright Grantee	201A
	Partnering for Success: Working with Sponsored Students from Marginalized Communities	203
	Risk Management and Support Services for Overseas Programs	208C
	They'll Never Know What Hit Them! How to Covertly Internationalize Your Campus	201B
12:15-1:45PM	Regional Business Meeting & Luncheon Sponsored by: SpanTran Evaluation Services, and CEA Global Education	Ballroom A
1:45-2:15PM	<u>State Meetings:</u> Alabama – 202A Arkansas – 204 Florida – 208A Georgia – 208B Louisiana – 201A Mississippi – 206 North Carolina – 203 Oklahoma – 202B Puerto Rico – 202C South Carolina – 201B Tennessee – 208C Texas – 209 U.S. Virgin Islands – 205	

CONFERENCE SCHEDULE

WEDNESDAY, OCTOBER 17 (CONT.)

Time	Event	Location
2:30-3:45PM	Session Block #6:	
	Citizenship and Immigration Services Update	209
	International Tax Issues for F-1 Students and J-1 Exchange Visitors	208C
	Being an "OPO" or One Person Office Isn't Always a Walk on the Beach	206
	Education Abroad Hot Topic: Visa Updates	208B
	Understanding Three-Year Foreign Degrees	202A
	Preparing International Students for Their New Life: An Innovative Virtual Pre-Arrival Orientation	208A
	Study Abroad: There's an App for That!	203
	COOPS are not for Chickens: Preparing Continuity of Operations Plan for Emergencies Affecting Your Own Office	201A
	¿Prohibir o Apoyar? Rethinking the Legal and Academic Boundaries of Hosting Scholars in a Globalized Era	201B
	Let Them Experience Your Island: Promoting Educational Field Trips for International Students	202B
3:45-4:15PM	Coffee Break in Exhibit Hall Passport Project (see page 10) drawing for two Kindle Fires!	3 rd floor foyer
4:15-5:30PM	Session Block #7:	
	Exchange Visitor Program Updates	209
	Beyond Immigration Advising: Encouraging Financial Cents	203
	ACIREMA: A Cross-Cultural Simulation	204
	Engaging First-Generation College Students in Study Abroad	208B
	eaHarmony: Evaluating Education Abroad Partners for Long-Term Success	202A
	Partnering with EducationUSA to Reach International Students	208A
	Comprehensive Internationalization: An Action Agenda	206
	I-9s and E-Verify: "Constantly Improving to Better Serve You"	208C
	Voices of International Graduate Students: An Assessment of Needs and Services	201B
	Got a Puerto? Bringing Together International and Domestic Students	202B
6:00-10:30PM	<p>ALL CONFERENCE DINNER & CLOSING CELEBRATION</p> <p>Off-site location: Antiguo Casino de Puerto Rico in Old San Juan Buses will leave from the PRCC entrance starting at 6:00PM. <i>Ticket (provided in conference packet) required for entrance!</i></p> <p>The evening will begin on the main floor and in the beautiful gardens of the Antiguo Casino with appetizers, a cash bar and a presentation by the Rums of Puerto Rico. Then, dinner, featuring Puerto Rican specialties, will be served both upstairs and downstairs. There will be music throughout the evening and dancing following dinner. Join your friends and colleagues to celebrate the closing of a fantastic conference!</p>	

Sponsors:

**PUERTO RICO
DOES IT BETTER**

seepuertorico.com®



CEE-SA-12-061

CONFERENCE SCHEDULE

THURSDAY, OCTOBER 18

<u>Time</u>	<u>Event</u>	<u>Location</u>
9:00-10:15AM	<u>Session Block #8:</u>	
	SEVP Open Forum/ Q & A Session	209
	Ouch! My Immigration Status Hurts: Navigating Illness and Reduced Courseload Requests	208C
	Out with the Old and In with the New: Communicating and Connecting with Your Students in the Age of Social Media	202B
	Connecting Study Abroad and Careers	208B
	Back from Abroad—Now What? Best Practices in Alumni Relations and Recruitment in Education Abroad	202A
	International Recruitment—Strategies That Work	208A
	Improving Intercultural Communication for International & Study Abroad Students	204
	Empowering Advisors to Workplace Satisfaction	203
	A Qualitative Study: Transitioning from ESL to a University—Results & Recommendations	201B
10:30AM-Noon	Regional Leadership Team Meeting	204
<i>SAFE TRAVELS HOME!</i>		

without regrets



without borders

Discover where you'll study
abroad at usac.unr.edu



NAFSA GUESTS

Regions III and VII are proud to have in attendance the following NAFSA Board Members and staff:

Sherif Barsoum—Vanderbilt University, NAFSA Board Member
 Kari Lantos—Manager, Grassroots Outreach
 David Fosnocht—Director of Immigration Practice Resources
 Dorothea Antonio—Director, Internationalization Services

Please be sure to extend a warm welcome to our NAFSA friends and colleagues!

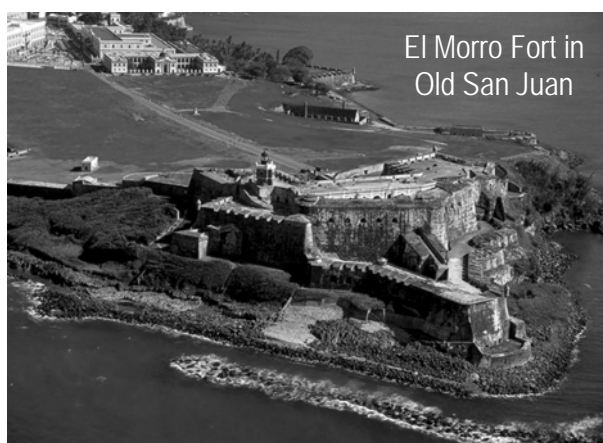
REGIONAL TRAVEL GRANT RECIPIENTS

REGION VII

Nicole Beaverson	Florida Gulf Coast University
Bryan Boudreau	Bob Jones University
Cheryl Delk-Le Good	Georgia State University
Helen Dolive	Birmingham-Southern College
Mona Foroughi	University of Alabama-Huntsville
Maria Frigge	Troy University
Regina George	University of Mississippi
Paula Hentz	Stetson University
Constance Mack-Andrews	Morehouse School of Medicine
Peter May	SCAD Atlanta
Monja Mihajlovic	University of South Florida
Mary Pagliero	University of West Alabama
Samantha Parrett	ELTI at UNC Charlotte
Gabriela Peschiera-Carl	University of South Carolina
Kaitlin Ritchie	UNC at Greensboro
Elizabeth Smith	University of Tennessee-Knoxville
Danielle Smith	Georgia Southern University
Iyonka Strawn-Valcy	Kennesaw State University
Julie Strecker	Mercer University
Erin Ward	University of West Florida

REGION III

Linda Best-Osagie	Mountain View College
Erica Cerza	Texas Intensive English Program
Devon Donohue-Bergeler	The University of Texas at Austin
Carla Guthrie	The University of Tulsa
Simon Hairston	Tarleton State University
Michael Johnson	Texas Tech University
Jessica Luhn	The University of Arkansas
Amber McFee	The Language Company, Edmond, Oklahoma
Olivia Suarez	Trinity University
Annette Whatley	The University of Texas at Austin



El Morro Fort in
Old San Juan

KEY TO SESSION DESCRIPTION KNOWLEDGE COMMUNITIES (KCs) AND FOCUS AREAS

EA = Education Abroad

ISSS = International Student & Scholar Services

IEM = International Enrollment Management

IEL = International Education Leadership

TLS = Teaching, Learning, Scholarship

CCP = Campus & Community Programming

Regulatory = Government Regulatory

2 year CC = Two Year Community College

Pan-NAFSA = Involves many areas of NAFSA

SESSION DESCRIPTIONS

SESSION BLOCK: I

MONDAY

3:30PM–4:45PM

Immigration Topics and Regulations: A Dialogue on Immigration in Puerto Rico and the Caribbean

As this is the first time having a NAFSA conference in Puerto Rico, there is a need among participants of the local higher education system to discuss the purpose, admission and procedures of USCIS and CBP. Representatives from the federal government will share ideas on best practices for admission, preserving nonimmigrant status, the differences between unlawful presence and violation of status; reinstatement; recent development and update in processes and regulations related with Puerto Rico USCIS and CBP agencies. In addition, the mission, purposes and procedures of each agency will be clarified. Lastly, the chair will conduct questions and answers, based on pre-surveys. Please note that this session will be mainly in Spanish, but all four presenters will receive and respond to questions in both Spanish and English.

Dr. Aida Castañer-Martínez, University of Puerto Rico, Rio Piedras Campus

Roberto Cintron, Field Office Director, San Juan and US Virgin Islands, US Citizenship and Immigration Services

Lcda. Luz H. Delgado, Supervisory Customs and Border Protection Officer, San Juan, PR

Luis Muniz, CBPO, FTO, San Juan CBP Training Branch

KC: Pan-NAFSA

Room: 208C

OPT In All Its Glory - The Ins and Outs

This session will dissect OPT/STEM from a regulatory and institution interpretative standpoint and how to best advise F1 students who don't find themselves in a picture perfect situation. Topics of discussion will include: the OPT regulations, thoughts to consider, what changes to expect in the near future, the OPT process from start to finish, possible complications, and possible options beyond OPT.

Jessica Hall, The University of Georgia

Angela Guinyard, Emory University

Inessa Y. Stepanenko, Trinity University

David Ware, Ware|Gasparian

KC: ISSS

Room: 209

Semester-Long J-1 Exchange Student Orientation

Explore Mercer University's vehicle for staying in contact with J-1 exchange students! Using a collaborative approach from the Office of International Programs and the Office of Academic and Advising Services, students are brought together for a semester in an extended orientation experience for credit. The origins, issues and course content of this dynamic program will be highlighted.

Julie Strecker, Mercer University

Tony Kemp, Mercer University

KC: CCP

Room: 202B

Going "All In" to Market Faculty-led Programs

Are your faculty-led programs bursting at the seams with participants? They could be... Learn best practices for marketing education abroad from a group with very diverse experience. We will be using the four Ps (Product, Promotion, Place, and Price) as a method to explain marketing principles, so come prepared to laugh a little and learn a lot!

Nick Zappitelli, International Studies Abroad

Karen Elmore, University of Oklahoma, College of Arts and Sciences

Elizabeth Mills, University of Tampa, International Programs

KC: EA

Room: 208B

Recruit, Retain, Refer - Simple Surefire Steps to Mastering the Three R's of Successful Student Recruitment, Retention and Customer Referrals!

Experienced IEP Directors Simon Smith and Maria Quillen will share skills that enabled them to build successful programs at UA – Fort Smith and University of Tampa to matriculate students to partner universities. This fun and interactive session will provide simple low cost takeaways that maximize recruitment, retention and customer referrals.

Simon Smith, ELS Fort Smith (University of Arkansas—Fort Smith)

Maria Quillen, ELS Tampa (University of Tampa)

KC: IEM

Room: 202A

Evaluating the Evaluator

Topics will include: Accreditation facts and concerns for international admissions, should you do-it-yourself or choose an outside evaluator, a review of professional organizations, a review of standards in foreign credential evaluations, selecting the right evaluator(s), knowing your institution (a great place to start) and Q & A (time permitting).

David Haynes, International Education Evaluations, Inc.

James Meyers, Educational Credential Evaluators, Inc.

Barbara Seyter, University of North Carolina Charlotte

KC: IEM

Room: 208A

SESSION DESCRIPTIONS

SESSION BLOCK: I (CONT.)

MONDAY

3:30PM–4:45PM

A Recipe for Strategic Partnerships: How to Maximize Impact on Your Campus

This session highlights the role that international offices play in the development of internationalization goals across university campuses. Presenters will help define what it means to build “strategic” institutional partnerships (including faculty research and student mobility) and will provide several case studies to illustrate successes and challenges faced during the process of developing these relationships. Participants will be able to self-examine the “recipe” for building strategic partnerships on their campuses, including assessment of those activities, and will leave with ideas and examples of how to leverage international partnerships to maximize impact on various campus constituents.

Carolyn Miller, Vanderbilt University
Shelley Jewell, Vanderbilt University

KC: Pan-NAFSA

Room: 203

Introduction to Pinterest and its International Education Applications

Use of social networking site Pinterest is on the rise! Many wonder, is Pinterest actually valuable, or another passing fad? Can Pinterest be leveraged as a promotional, informational or communicative tool in the context of International Education? This session will introduce functionality, best practices, and specific ideas of how to create a strategic Pinterest presence to achieve your office's goals.

Kim Karalekas, Academic Programs International (API)
Julie Ficarra, University of South Florida
Mark Powell, University of New Orleans
Blair McElroy, The University of Mississippi

KC: Pan-NAFSA

Room: 204

Challenges, Benefits & Suggestions of hosting SACM Sponsored F-1 Students

During this roundtable discussion we will provide a brief history of the Saudi Arabian Cultural Mission (SACM) and discuss the unique challenges and benefits to community colleges in the southeastern United States who are hosting F-1 students sponsored by SACM. Participants will gain valuable insights into SACM policies and an often misunderstood student population.

Glorianna Rhodes, Hillsborough Community College
Michael Brennan, Hillsborough Community College

KC: Pan-NAFSA

Room: 201B

SESSION BLOCK: II

TUESDAY

8:30AM–9:45AM

Consular Affairs Update

This session will cover general considerations in advising those seeking to apply for a new or renewed non-immigrant visa at a U.S. consular post abroad. We will also discuss nonimmigrant visa processing for third country nationals in Mexico and Canada. We will provide an overview of security clearances and other administrative processing delays.

Avi Friedman, Wolfsdorf Immigration Law Group
David Ware, Ware|Gasparian
Kathleen Gasparian, Ware|Gasparian
TBD, Department of State

KC: Regulatory

Room: 209

Out of This World Aliens! Case Processing Updates and Tactical Strategies for Outstanding Researchers, Professors and Scholars

Keeping talented international faculty is often affected by an institution's ability to help them secure U.S. Permanent Residence. This panel of experienced advisors and attorneys will share tactical strategies for filing successful EB-1 and EB-2 green card cases for qualified professors, researchers and lecturers. Toolkit topics will include qualifying non-traditional roles, evidence packet formats and how to handle RFEs.

Maggie Murphy, Jackson Lewis LLP
Andrew G. Thorley, University of Texas
Dahlia M. French, Vanderbilt University

KC: ISSS

Room: 208C

Programming Ideas to Celebrate International Education Week

Running out of ideas to celebrate IEW in your campus? This session will offer you creative programming ideas that you could use. We will share our ideas; from one month to the regular one week IEW celebration. Our ideas are diverse, easy, fun and cheap, too. Come and learn how our different schools did it and how you can implement those ideas in your own campus.

Cynthia Smith, University of Arkansas
Dr. Drew Smith, Henderson State University
Kristin Kasting, Armstrong Atlantic State University
Allyson Hughes, University of Arkansas at Little Rock, AR
Dr. Veronikha Salazar, Armstrong Atlantic State University

KC: CCP

Room: 202B



**FEBRUARY 1-2, 2013
WINSTON-SALEM, NORTH CAROLINA**

Hosted by Wake Forest University



WISE 2013 is a practitioner's conference focused on helping study abroad students develop intercultural skills and awareness. WISE is designed for faculty who lead or teach short- or long-term programs abroad, and for study abroad professionals who assist in this important cross-cultural experience.

WISE CAN HELP YOU...

- Help your students learn to engage with the local culture
- Increase their intercultural competence
- Minimize culture shock
- Help them recognize cultural nuance and expectations
- Prepare them to understand and recognize local cultural patterns and values

Registration and conference information at: cis.wfu.edu/wise.



WAKE FOREST
UNIVERSITY

SESSION DESCRIPTIONS

SESSION BLOCK: II (CONT.)

TUESDAY

8:30AM–9:45AM

Show Me the Money: Best Practices in Study Abroad Scholarship Advising

Participation in study abroad has steadily increased in the last decade. Despite the growing interest in international experiences, financial challenges remain. Utilizing examples and models from three institutions that have had significant growth in external scholarship awards recently, this session will present ways to increase internal and external awards for students, and provide information on how to effectively market scholarships.

Kenya Casey, Emory University
Magnolia Hernandez, Florida International University
Dawn Foster, Georgia State University
Andrew Gordon, Diversity Abroad

KC: EA

Room: 208B

Designing Effective Pre/Post International Experience Assessment Tools

When designing a pre and post travel assessment, administrators are able to see areas for improvement for the students to attain priority skills. This session will focus on the development and implementation of these. The session will include information from Georgia Tech on internship assessment, NC State's tracking of intercultural development and a Q-methodology-based tool from Hendrix College.

Caroline Anderson, Work Abroad Program - Georgia Institute of Technology
J. Scott Carter, North Carolina State University
Peter Gess, Hendrix College

KC: EA

Room: 202A

Online Marketing and Lead Generation - Is it Right for You?

Online marketing can be an effective way to reach international students. It can be a cost effective way to cast a wide net and attract students from across the globe to your institution. We will take a dive in to the online world and bring you perspectives from an online marketing company and from a school with experience recruiting online.

Don Sears, Envisage International
Lokesh Shivakumaraiah, Mississippi State University

KC: IEM

Room: 208A

Website Usability: How User-Friendly is your Website?

A well-organized website built with usability in mind will not only enhance your marketing efforts but will also allow your users to easily navigate all facets of your website. This workshop is designed to teach web usability principles that any office can follow to evaluate the user experience on their own website and make improvements. We will provide tips and ideas for how to improve usability and instructions for conducting web usability testing. No technical knowledge is required.

Laura Moix, University of Arkansas
Laura Semenow, University of Tulsa
Brandon Lee, TerraDotta

KC: Pan-NAFSA

Room: 203

The Role of Community and Technical Colleges in Promoting International Education

Because of the rising cost of tuition at 4 year colleges and universities, more students are looking to ease into the higher education system by enrolling at Community and Technical Colleges. As enrollment rises at these institutions, educators and administrators need to be aware of how to facilitate and promote International Education. This includes Study Abroad Programs, Foreign Language Classes, etc.

Frank Inscoe, Chattahoochee Technical College
Ashley Strong-Green, Chattahoochee Technical College

KC: 2 year CC

Room: 201A

Exploring Global Leadership in International Education

This highly interactive session is for leaders of higher educational institutions whose decisions and behaviors shape the development and the process of institutional internationalization. Participants will explore theoretical and practical frameworks of international education leadership and identify behaviors that will allow them to be effective change agents in implementing an international education agenda in their institutions. Highlighting findings from AIEA's 2011 SIO Profile survey, this session explores key principles in global leadership including intercultural competence.

Dr. Darla Deardorff, Duke University/AIEA
Dr. Rodolfo Hernandez, UT-Dallas

KC: IEL

Room: 201B

SESSION DESCRIPTIONS

SESSION BLOCK: III

TUESDAY

11:15AM-12:30PM

CTCEU and You

Join us for a frank discussion of student and campus visits conducted by the Counterterrorism and Criminal Exploitation Unit (CTCEU) of the Department of Homeland Security. Topics of discussion will include what to expect in a visit, how to prepare for a visit, and what are the possible outcomes of a visit.

Kathleen Gasparian, Ware|Gasparian

Robert Lucas, Special Agent/Program Manager, Counterterrorism Criminal Exploitation Unit

KC: Regulatory

Room: 209

To Complete or Not Complete: Graduation & End-of-Program Reporting

This session will cover best-practices for end-of-program and completion issues, especially graduation reporting, as it relates to international students for SEVIS and institutional purposes. DSOs will discuss scenarios applicable to both university and community colleges to help participants build skills for establishing policies and procedures. Participants will leave with helpful resources and a preliminary plan to implement at their institutions.

Meghan Lane, University of South Florida

Meghan Pace, Angelo State University

Miranda Moore, Hillsborough Community College

Gidget Pettibon, Midwestern State University

KC: ISSS

Room: 208C

Incoming Exchange Student Management - Tips & Tricksc

Three veterans in the field share their strategies for assisting incoming exchange students with their special, and often intensive, concerns. Topics covered include tips for managing pre-arrival communication, course registration, U.S. student volunteers, and new student orientation. We will provide electronic samples of our favorite time saving tools and allow participants to work in groups to personalize provided samples.

Amy Mabery, University of North Carolina Wilmington

Kaitlin Ritchie, University of North Carolina Greensboro

Laura Moix, University of Arkansas

KC: ISSS

Room: 202B

Warnings, Waivers, Wanderlust: Balancing Risk Management with Students' Expectations

This session aims to explore some of the more complex and ambiguous areas of risk management as they pertain to students' needs and expectations. Topics will include Department of State travel warnings (reactions, responses, effects), the balancing act between academic freedom and students' safety (evacuations, programmatic vs. personal decisions, post-evac options), and non-credit bearing programs (institutional responsibilities). The session is structured to be to interactive.

Susanne Hill, University of Florida

Amanda Maurer, University of South Florida

Steve Hopkins, Cultural Insurance Services International

Giselda Beaudin, Rollins College

KC: EA

Room: 208B

International Activities of AACRAO: Collaborating with our Colleagues in Registrar's and Admissions Offices

This session highlights the international initiatives of the American Association of Collegiate Registrars and Admissions Officers, including international credentials evaluation, study abroad transcribing, international consulting, and familiarization trips to learn about academic systems and institutional structures around the world. Learn about the value of AACRAO-NAFSA collaboration and ways to get yourself and your colleagues across campus involved!

Opal Leeman Bartzis, Institute for Study Abroad, Butler University

Angela Branigan, University of Texas - Austin

KC: Pan-NAFSA

Room: 202A

Re-Defining the Enrollment Funnel

The traditional enrollment funnel has crumbled beyond recognition, as nearly half of all prospective students do not identify themselves to potential host campuses until they apply for admission. Learn about the underlying factors behind this global trend. We'll also provide the latest data about prospective students' decision-making process -- which can guide your overall recruitment and admissions communication strategy.

Cheryl DarrupBoychuck, USjournal and FundsV Working Group

Pamela Barrett, i-graduate

KC: IEM

Room: 208A

Because insurance is not enough.

HTH Worldwide

Visit www.hthworldwide.com

Call 1.888.243.2358 or 1.610.254.8769

Email Customerservice@hthworldwide.com



SESSION DESCRIPTIONS

SESSION BLOCK: III (CONT.)

TUESDAY

11:15AM-12:30PM

Creating an Intentional, Interdepartmental International Living Learning Community

This interactive session offers tools to launch internationally-themed living-learning communities and provides best practices for assessing their effectiveness. Participants will gain a good understanding of LLCs and how they can contribute to campus internationalization, be able to identify partnerships to initiate and establish an LLC, learn ways to overcome challenges to developing and maintaining LLCs, and obtain valuable programmatic ideas.

Sylvain Chabra, University of South Carolina

Mark Leech, Mercer University, Atlanta

Nathanial Lynch, Arkansas State University

Michael Freeman, University of Arkansas

KC: Pan-NAFSA

Room: 203

Finding your place in NAFSA Leadership

Engage more in the field of international education by serving as a NAFSA leader either locally or nationally. Learn about the application process and discover opportunities available at every level of your career. NAFSA's various leader positions influence public policy, the path of the organization, and the services provided to international educators. Find out where you fit in and meet other dynamic leaders like YOU.

Elena Anderson, The Brookings Institution

Kristy Magner, Loyola University New Orleans

KC: Pan-NAFSA

Room: 206

Study Abroad's Impact on Female Identity Development

This pilot study explores how study abroad experiences foster identity development in female college students. Data from female undergraduates at a large public institution in South Carolina addressed the question: How do women develop meaning of their female self-concept through their participation in study abroad? The results of the study will be presented along with implications, and methods for intervention. A discussion will be included on incorporating identity development themes in pre-departure and re-entry workshops and materials for students.

Sallie Turnbull, Clemson University

Tabitha Smith, Johnson and Wales, North Miami campus

Elizabeth Crews, Furman University

KC: TLS

Room: 201B

SESSION BLOCK: IV

WEDNESDAY

9:00AM-10:15AM

Recertification: Highlights and Issues

Representatives from the Student and Exchange Visitor Program (SEVP) will present information and guidance on Recertification. Highlights of this presentation include an overview of the recertification process, 1-17 updates, tips and processing times. SEVP representatives will also offer updated information on SEVIS II other SEVP initiatives.

Robin Catmur, University of Georgia

Katherine Liggett, Adjudicator, School Certification Unit (SCU)

Molly French, Adjudicator, School Certification Unit (SCU)

KC: Regulatory

Room: 209

PERM for College Teachers: Special Handling or Special Problems?

Confused and concerned how DOL policy changes are affecting PERM applications? In an interactive session, we'll discuss strategies to minimize problems with applications that use "special handling" Labor Certification process for college and university teachers, including significant BALCA decisions, documenting online ads, determining acceptable professional journals and websites, definition of "teaching", and the use of ads with "preferred" or "desired" qualifications.

Wendy Syer, The University of Tennessee, Knoxville

Loveness H. Schafer, Louisiana State University

David Ware, Ware|Gasparian

KC: ISSS

Room: 201A

Fostering Relationships between US and International Students to Develop Globally Competent Leaders

This session will first describe programs at two institutions which help undergraduates to develop the knowledge and skills to become globally competent leaders, and will then detail how this is accomplished in part through structured interactions with international students. Participants will leave with practical information on how to advocate for, budget, develop, and improve similar programs at their own institutions.

Meghan Popick, Georgia Institute of Technology

Adrienne Nussbaum, Boston College

Susan Shea, Boston College

Rebecca Bacon, Georgia Institute of Technology

KC: CCP

Room: 202B

SESSION DESCRIPTIONS

SESSION BLOCK: IV (CONT.)

WEDNESDAY 9:00AM–10:15AM

Engaging Students in Orientation: Tools to Satisfy a Variety of Learning Styles

This session will share ideas and methods for engaging students from a variety of cultural and academic backgrounds in an orientation, whether it is pre-departure or re-entry, in-person or online. Strategies will be presented that focus on transitioning students from passive observer to active participant.

Chelsea Kindred, Academic Programs International (API)

Jeff Simpson, Oklahoma State University

Viet Ha, Presbyterian College

KC: EA

Room: 208B

U.S. IEP Accreditation and the December 2010 Law: Consequences, Means, and Gentle Suggestions

Presenters will discuss the value of seeking nationally accepted accreditation for U.S. intensive English programs (IEPs) by ACCET and CEA, the initial intent and the SEVP interpretation of the U.S. Congressional law requiring accreditation, and the guidelines for non-national, regionally accredited IEPs to attest their status. Tips and strategies for seeking accreditation and conducting a successful self-study will be offered.

Dr. Alexandra Rowe, University of South Carolina

Dr. Leyah Bergman-Lanier, Spring International Language Center, University of Arkansas-Fayetteville

KC: IEM

Room: 202A

Credentials from Brazil, Cuba, Mexico, and Puerto Rico: Characteristics and Updates

This session will address general characteristics of and updates to the educational credentials of Brazil, Cuba, Mexico, and our host, Puerto Rico. The information is based on research for the NAFSA "Online Guide to Educational Systems Around the World", an ongoing project which benefits credentials analysts in the US and abroad.

Barbara Glave

Freda Clement Willis, Academic Evaluation Services, Inc.

Pilar Menéndez, SpanTran Evaluation Services

Dr. Lou Nunes, Academic Evaluation Services, Inc.

KC: IEM

Room: 208A

Student Immigration 101 for Professionals Outside of International Advising

An overview of the F & J visa types, the visa process, and other related topics for professionals outside of international student advising in the United States. Topics include: Student visas, the role of an ISSS office, and how to support International students on campus. This session is intended to serve academic professionals, ESL instructors, education abroad, faculty, international office staff.

Katie Tudini, Georgia Institute of Technology

Leanne Jones, University of North Texas

KC: Pan-NAFSA

Room: 208C

Diversity Training for Office Volunteers

Learn how to develop and retain your office/program volunteers. Presenters from a wide variety of institutional backgrounds will share on topics such as: the role of volunteers, acquiring and screening volunteers, training your volunteers, and addressing topics and issues that often come up when working with volunteers.

Cynthia Smith, University of Arkansas

Jamie Sanchez, Rollins College

Nicole Beaverson, Florida Gulf Coast University

Theresa Isibor, Hispanic Learning Center of Cabarrus County

Dr. Li-Chen, Chin, Duke University

KC: Pan-NAFSA

Room: 203

Making Meaning of the American Student - Spanish Host Family Experience

This session explores the findings of a phenomenological study which address of how Spanish host families come to interpret American culture, as well as their own culture, via the experience of hosting American students. Weber's cultural iceberg model provides a conceptual framework for analyzing both the nature of the cultural transmission from student to host as well as host families' interpretation of American and Spanish cultures. The session will open with an interactive group exercise on the perceptions of American culture, and conclude with a discussion of how the nature of these findings might be applied to work within education abroad, community programming, and international student services.

Dr. Jennifer Engel, University of South Carolina

Courtney Link, Academic Programs International

KC: TLS

Room: 201B

SESSION DESCRIPTIONS

SESSION BLOCK: IV (CONT.)

WEDNESDAY 9:00AM–10:15AM

International Teaching Assistants: Institutional Support at Top Research Universities

The University of Tennessee, Knoxville (UTK), surveyed 20 peer institutions to learn about support offered to international teaching assistants (ITAs). Personnel from several units designed and carried out the survey: English, Modern Foreign Languages, the Teaching and Learning Center, the Graduate School, the English Language Institute, and the Center for International Education. The session will discuss data collection and the survey's findings, including descriptions of how ITAs are tested and the services offered at various institutions.

Joann Ng Hartmann, The University of Tennessee, Knoxville

Dr. Jim Hamrick, The University of Tennessee, Knoxville

Laurie Knox, The University of Tennessee, Knoxville

Ferlin McGaskey, University of Texas-Austin

KC: Pan-NAFSA

Room: 206

SESSION BLOCK: V

WEDNESDAY 10:45AM–NOON

Joint Government Panel

We will have representatives from various government agencies available for an interactive Q & A session. Agencies would tentatively include USCIS, SEVP, and CBP, and possibly others. We will be soliciting your questions in advance of the conference, especially those that involve cross-responsibilities between and among agencies.

Robin Catmur, University of Georgia

Regina Henry, Oklahoma State University

TBD, SEVP Representative

TBD, USCIS Representative

KC: Regulatory

Room: 209

Venezuelan CADIVI Letters: Complications and Resolutions

CADIVI letters are a requirement mandated by the Venezuelan government in order for Venezuelans studying abroad to retrieve money from their own bank accounts. This workshop will explain the process that the students go through, how international student offices can help them, and why the process becomes extremely complicated. Examples of the letters will be provided.

Monja Mihajlovic, University of South Florida

Thora Collymore, University of South Florida

KC: ISSS

Room: 206

They Have Arrived! Now What?: Best Practices for Coordinating a Successful Orientation Season

Students arrive to the U.S. often with a myriad of emotions that range from excitement to bewilderment. The best way to ease and support your newly arrived students is by providing a variety of resources to help answer their questions and acclimate to their new surroundings. This presentation will highlight several informative and fun orientation events that can be easily adapted to any campus.

Angela Branigan, The University of Texas at Austin

Tanya Schaad, Florida State University

Annette Whatley, The University of Texas at Austin

KC: CCP

Room: 202B

They Speak English, Too! So How Different Can it Be? Advising on Differences in Academic Cultures

Students often choose English-speaking study abroad locations because of a perceived comfort level based on shared language, but understanding the subtle differences in academic cultures is vital for success. This session will help advisors prepare students for the obvious and the unexpected variations they will encounter. Advisory video clips from on-site directors and students abroad will be included.

Opal Leeman Bartzis, Institute for Study Abroad, Butler University

Todd Karr, Arcadia University

Gaby Peschiera-Carl, University of South Carolina

KC: EA

Room: 208B

First Do No Harm - Exploring Impact of Experiential Learning on Host Communities

The impact of experiential learning abroad programs on host communities is seldom evaluated, due to insufficient assessment mechanisms. This session will explore these programs' impact on host communities. The presenters will consider the sending institution/host community relationship, discuss the positive and negative impacts host communities may experience, and identify aspects of program design that might reduce negative impacts.

Jeanne d'Arc Gomis, Appalachian State University

Elaine Acacio, CIEE-Council on International Educational Exchange, Dominican Republic

Betsy Ball, Tarleton State University

Julie Ficarra, University of South Florida

KC: EA

Room: 202A

SESSION DESCRIPTIONS

SESSION BLOCK: V (CONT.)

WEDNESDAY

10:45AM–NOON

IELTS in the US and Beyond: A Truly Global Experience

IELTS is a test of "international English" that is increasingly used as proof of English proficiency among US universities, and this session will highlight ways IELTS can benefit your recruitment efforts. You will have the opportunity to view test samples, identify fraudulent test results, download IELTS scores electronically, and review new security enhancements.

Amy Carter, IELTS International

Lokesh Shivakumaraiah, Mississippi State University

Rus Kiser, ELS Language Centers, Oklahoma City

KC: IE

Room: 208A

Views From Two Sides Of The Fulbright Int'l Education Administrator (IEA) Program: The Host Institution And The Fulbright Grantee

Fulbright IEA seminars help international education professionals create connections with the societal, cultural and higher education systems of other countries. Participants in this session will learn about the opportunity to apply for Fulbright IEA seminars, gain insight into the host institutions experience participating in the program, and learn some tips about how to more fully participate in the IEA seminar.

Michael Freeman, University of Arkansas, Korea International Education Administrators Program

Santrell Caison, Wake Technical Community College, U.S.- Germany International Education Administrators Program

Paul Geis, Elon University, Fulbright-Nehru International Education Administrators Seminar

Ramona Kirsch, St. Petersburg College, Fulbright-Nehru International Education Administrators Seminar

Cory Owen, Rice University, U.S.- Germany International Education Administrators Program

Patricia Jernigan, Jackson State University, Fulbright-Nehru International Education Administrators Seminar and U.S.- Germany International Education Administrators Program

Michael Clarke, Southern Methodist University, U.S.- Korea International Education Administrators Program and participant in the U.S.- Germany International Education Administrators Program

Ashlee Flinn, Austin College, U.S.- Korea International Education Administrators Program Mississippi State University

KC: Pan-NAFSA

Room: 201A

Partnering for Success: Working with Sponsored Students from Marginalized Communities

As the US continues to use international exchange as a tool for public diplomacy, sponsored students from marginalized communities are coming for academic study. This session will examine how best to help create a successful campus environment for them and will better equip attendees to advise university staff and faculty members working with marginalized populations. The key to success is collaboration.

Gloria Flores Passmore, University of Arkansas

Emily Bosio, Institute of International Education

KC: Pan-NAFSA

Room: 203

Risk Management and Support Services for Overseas Programs

Our campuses are more engaged overseas than ever. These programs often lead us to tough legal questions. Do you buy or lease the building or vehicle? Do you employ local workers or send faculty from home? Do you know local immigration, labor, and tax laws? This workshop will assist you in formulating the questions and where to find answers.

Doug Podoll, Georgia Institute of Technology

KC: IEL

Room: 208C

They'll Never Know What Hit Them! How to Covertly Internationalize Your Campus

The concept of "Comprehensive Internationalization" is daunting for a community college that may not have the support structures in place. In a perfect world, college leadership, faculty, students, and the community would all demand global engagement. This session will provided tried and true solutions that one person can effect to produce globally aware graduates and encourage dialogue to discover even more.

Shawn Woodin, Community Colleges for International Development

Betty Jensen, Tallahassee Community College

Dr. Chirinjev Peterson, Greenville Technical College

KC: 2 Year CC

Room: 201B

SESSION BLOCK: VI

WEDNESDAY

2:30PM–3:45PM

Citizenship and Immigration Services Update

We will have representatives from the Service Center Operations as well as Service Centers representatives from Texas, California, and Vermont. There will be a defined presentation of Service Center best practices, processing times, adjudication training and standards, plus nuts and bolts on how to file the cases, I-140, I-129, and I-765. This could be a call in session to the different service centers.

Regina Henry, Oklahoma State University

Robin Catmur, University of Georgia

KC: Regulatory

Room: 209

ACHIEVING EXCELLENCE THROUGH INTERNATIONALIZATION

The Ana G. Mendez University System (AGMUS) salutes NAFSA members participating in the 2012 Annual BiRegional Conference in San Juan, Puerto Rico.

As part of its internationalization initiatives, AGMUS has created 3 Vice Chancelleries for International Affairs which are responsible for overseeing internationalization processes and for facilitating and developing alliances and collaborative projects with institutions around the world.



Dr. Zaida Vega Lugo

Vice Chancellor for
International
and Corporate Affairs
Universidad Metropolitana

zvega@suagm.edu
PO Box 21150
San Juan, Puerto Rico 00928
(787) 766-1717
Exts. 6312, 6315 & 6321
FAX: (787) 751-3504
www.suagm.edu/umet/



Mrs. Leanne R. Chacón

International Programs
Coordinator
Universidad del Este

ue_international@suagm.edu
PO Box 2010
Carolina, Puerto Rico 00984
(787) 787-257-7373
Ext. 2003
FAX: (787) 776-1220
www.suagm.edu/uneinternational



Dr. E. David Méndez

Vice Chancellor for
International and
Corporate Affairs
Universidad del Turabo

edmendez@suagm.edu
PO Box 3030
Gurabo, Puerto Rico 00778
(787) 743-7979
Exts. 4647
FAX: (787) 743-7991
<http://www.suagm.edu/ut>

AGMUS is comprised of three fully accredited higher education institutions (Universidad del Turabo, Universidad del Este, and Universidad Metropolitana), and Sistema TV, the only PBS-sponsored educational television stations

in the island (WMTJ-Channel 40). The University system also has 13 additional locations throughout Puerto Rico and four branch campuses in the United States (Orlando, Miami Metro, Tampa and Maryland).



**Sistema Universitario
Ana G. Méndez**

SESSION DESCRIPTIONS

SESSION BLOCK: VI (CONT.)

WEDNESDAY 2:30PM–3:45PM

International Tax Issues for F-1 Students and J-1 Exchange Visitors

F-1 and J-1 students and exchange visitors deal with multiple, and often complex, tax issues regarding payments received in the USA. This workshop will explain the relevant U.S. tax laws; provide resources and informational tools; and guidance on creating an effective institutional process. Annual tax filing resources and U.S. tax requirements for payments to international visitors will also be discussed.

Dahlia French, Vanderbilt University

Linda Dunbar, Oklahoma State University

Susan Caldwell, University of Georgia

Doug Podoll, Georgia Institute of Technology

KC: ISSS

Room: 208C

Being an "OPO" or One Person Office Isn't Always a Walk on the Beach

Three OPOs from two regions and three types of institutions (public and private universities, and an ELP) will present how they meet the goal of providing comprehensive services to their international students. Attendees will interact to identify best practices for their biggest challenges.

Brett Reichert, Clayton State University

Erin Garcia, St. Edwards University

Chelsea Curtis, Aston International Academy

KC: ISSS

Room: 206

Education Abroad Hot Topic: Visa Updates

Do you advise students who need visas for their study abroad programs? This session will focus on up-to-the-minute information for France, Italy, Spain and the UK as well as touch on frequently asked questions about visas for other countries. The session will also explore best practices for education abroad offices providing visa advising and assistance.

Giselda Beaudin, Rollins College

Regina Foster, Clemson University

Wendy Sheets, University of Tulsa

Olga Catalena, Texas A&M University

KC: EA

Room: 208B

Understanding Three-Year Foreign Degrees

Join us for an informative session on the review and assessment of foreign three-year academic degrees. We will educate you on various educational systems and assess actual documentation from overseas programs. Sample evaluation reports and references will be provided.

Tiera Beisinger, Josef Silny & Associates, Inc.

KC: IEM

Room: 202A

Preparing International Students for their New Life: An Innovative Virtual Pre-Arrival Orientation

Capitalizing on university resources, NSU has put together this innovative virtual object in the form of a pre-arrival orientation to make sure new international students get all the basic information they need when getting ready for their new life. Presentation will cover creation process, rationale, implementation phase, and students' opinions.

Alejandra Parra, Nova Southeastern University

KC: IEM

Room: 208A

Study Abroad: There's an App for That!

Communication systems are the heart of Study Abroad programs: corresponding with active programs, marketing, and managing paperwork associated with sending students abroad. We will explore current technologies and demonstrate how to use them in the Study Abroad office. Special emphasis will be placed on efficiency applications including iPad and phone apps, cloud technology, as well as hard copy systems organization. Prizes! Presenters are from the Tennessee Consortium for International Studies (TnCIS).

Tracey Bradley, Tennessee Consortium for International Studies (TnCIS)

Theresa Castillo, Tennessee Consortium for International Studies

Karen Anderson, Tennessee Consortium for International Studies

KC: Pan-NAFSA

Room: 203

COOPs are not for Chickens: Preparing a Continuity of Operations Plan for Emergencies Affecting Your Own Office

This session will enable attendees to create a Continuity of Operations Plan (COOP) to keep their office running when events deny access to the physical office. Overseas crises do not respect the home office situation so international educators need to be prepared to handle simultaneous crises at home and abroad. This session outlines the necessity for and creation of a COOP document.

Brad Sekulich, UNC Charlotte

Kerry Geffert, American Institute for Foreign Studies

Torian Lee, Xavier University of Louisiana

Joshua Allen, MPA, CBCP, UNC Charlotte

KC: Pan-NAFSA

Room: 201A

SESSION DESCRIPTIONS

SESSION BLOCK: VI (CONT.)

WEDNESDAY 2:30PM–3:45PM

¿Prohibir o Apoyar? Re-thinking the Legal and Academic Boundaries of Hosting Scholars in a Globalized Era

A lawyer, a professor and an advisor use recent survey data to engage participants in an analysis of the culture of visa sponsorship for international scholars, including professors, visiting artists, doctors, student-researchers, speakers and interns. Who are the institution's gate-keepers? What are the objectives in hosting international visitors? If immigration law allows it, should you? [Presenters speak Spanish and English.]

Dr. Aida Castañer-Martinez, University of Puerto Rico

David Ware, Ware|Gasparian

Parker Emerson, Yale University

KC: IEL

Room: 201B

Let Them Experience Your Island: Promoting Educational Field Trips for International Students

This session will guide you through the process of planning and implementing a one day field trip to a one week trip anywhere around your school, around your state, and around this country. If you're looking for some great ways to help your international students experience your island, while keeping your retention numbers up, then this is the session for YOU!

Drew Smith, Henderson State University

Kristin Kasting, Armstrong Atlantic State University

Veronikha Salazar, Armstrong Atlantic State University

KC: Pan-NAFSA

Room: 202B

SESSION BLOCK: VII

WEDNESDAY 4:15PM–5:30PM

Exchange Visitor Program Updates

Representatives from the Exchange Visitor Program will call in to this session with information regarding updates and changes to their program.

Sylvia Shortt, University of West Georgia

Tanya Grubbs, Georgia Southern University

Tammie King, Exchange Visitor Program

KC: Regulatory

Room: 209

Beyond Immigration Advising: Encouraging Financial Cents

Presenters will uncover challenges experienced by international students making education payments. Topics will include exchange rates, fees, language barriers, unfamiliarity with payment options, obstacles with local banks, country-specific insights and will highlight solutions that help students overcome challenges. Best practices in working with internal and external partners to streamline communication to international students regarding financial matters will be shared.

Sarah Highsaw, University of Oklahoma

Elle Shroyer, University of Oklahoma

Mona Foroughi, University of Alabama in Huntsville

Marisa Atencio, Georgia Institute of Technology

Sharon Butler, peerTransfer

KC: CCP

Room: 203

ACIREMA: A Cross-Cultural Simulation

ACIREMA is a simulation exercise designed to sensitize participants to the difficulties international students have when pursuing an American education. The exercise simulates the procedures students must follow from the initial contact with a U.S. educational institution to their arrival on campus. The cross-cultural aspects of the exercise are plentiful and are sure to be enlightening for participants.

Daphne Orr, Georgia State University

Lenka Garimella, Georgia State University

Julie Strecker, Mercer University

Cheryl Delk-Le Good, Georgia State University

Jonas Strecker, Macon State College

KC: CCP

Room: 204

Engaging First-Generation College Students in Study Abroad

First-generation college students represent nearly 40% of college enrollment in the USA, yet maintain some of the lowest abroad rates. We will outline 'First Gen' characteristics and share best practices for engaging and advising both students and parents from a private school, public school and program provider perspective. We will address challenges they face before, during and after studying abroad.

Jessica Francis, Wake Forest University

Ali Janicek, Butler University

KC: EA

Room: 208B

SESSION DESCRIPTIONS

SESSION BLOCK: VII (CONT.)

WEDNESDAY 4:15PM–5:30PM

eaHarmony: Evaluating Education Abroad Partners for Long-Term Success

International education offices lead in the development and maintenance of international education partnerships (exchange, direct-enroll, and third-party provider). This session highlights strategies used in evaluating, developing, and maintaining these partnerships. The perspectives of the panel represent small, medium, large, public, and private institutions with varying levels of partnerships. A key objective of the session will be to share best practices.

Angie Edwards, Winthrop University

Torian L. Lee, J.D., Xavier University of Louisiana

Lisa Nevalainen, The University of North Carolina at Charlotte

KC: EA

Room: 202A

Partnering with EducationUSA to Reach International Students

How are U.S. institutions working with EducationUSA to improve their international admissions & recruitment efforts? This panel session will look at examples of cooperation and initiatives between colleges and the U.S. Department of State's EducationUSA network of hundreds of advising centers in 170 countries.

Marty Bennett, EducationUSA/Institute of International Education

Lokesh Shivakumaraiah, Mississippi State University

Dickie Hargrave, University of North Texas

TBD, U.S. Department of State

KC: IEM

Room: 208A

Comprehensive Internationalization: An Action Agenda

The concept of comprehensive internationalization (CI) is increasingly of interest on campuses, but the real key for international educators is how to take action to support it. This session will cover the definition of CI, review the rationales you can use in your discussions about it, and look at ways to participate in and/or lead cross-campus collaboration and action to encourage CI.

Amy Henry, Georgia Institute of Technology

Adria L. Baker, Ed.D., Rice University

KC: Pan-NAFSA

Room: 206

I-9s and E-Verify: "Constantly Improving to Better Serve You"

U.S. law requires employers in the U.S. to verify the employment eligibility of all new employees through Form I-9. Some employers are also using E-Verify either by choice or by state law mandate. Our foreign national employees bring special challenges to the process. This workshop will review that process, look at best practices, and try to answer your burning questions.

Linda Dunbar, Oklahoma State University

Dahlia French, Vanderbilt University

Susan Caldwell, University of Georgia

Doug Podoll, Georgia Institute of Technology

KC: Pan-NAFSA

Room: 208C

Voices of International Graduate Students: An Assessment of Needs and Services

Very few universities have done comprehensive needs assessment and evaluations of services that specifically garner international students' input. This session will highlight the challenges of designing and administering a survey instrument in assessing the needs of and services provided to international graduate students. It will focus on the process and scope of collaborating departments, the development and components of a comprehensive survey, and the results, outcomes and recommendations.

Dr. Saleha Suleman, University of North Texas

Dr. Adam F. Harold, University of North Texas

KC: IEL

Room: 201B

Got a Puerto? Bringing Together International and Domestic Students

This session will show you how your programs and activities can bring together domestic and international students to enable them to not only build lasting friendships but to reflect on and appreciate their own cultures and values. We will also show you some practical avenues to intentionally develop relations across cultures from living learning communities to mentoring and conversation partner programs.

Dr. Veronikha Salazar, Armstrong Atlantic State University

Dr. Drew Smith, Henderson State University

Massiel Rodriguez, University of Arkansas at Fayetteville, AR

Allyson Douglass, University of Arkansas at Little Rock, AR

KC: Pan-NAFSA

Room: 202B

SESSION DESCRIPTIONS

SESSION BLOCK: VIII

THURSDAY

9:00AM–10:15AM

SEVP Open Forum / Q & A Session

NAFSA regional regulatory ombudpersons and KCISS liaisons will discuss hot topics related to SEVIS, followed by questions and answers.
Robin Catmur, University of Georgia KC: Regulatory Room: 209

Ouch! My Immigration Status Hurts: Navigating Illness and Reduced Course Load Requests

This session will focus on how to advise international students who wish to drop below full-time status. Presenters intend to give an overview of acceptable reasons, common requests, and suggested alternatives to a course drop. Utilizing case studies and participant feedback the goal of the session is for advisors to feel more confident when navigating a "less than full course" request.

Regina George, University of Mississippi
Patricia E. Marrapese, The University of Texas at Austin
Kelly Reid, INTO University of South Florida KC: ISSS Room: 208C

Out with the Old and In with the New: Communicating and Connecting with your Students in the Age of Social Media

How do you get your students involved with the campus & community? What are the best ways to communicate these opportunities? We will explore how you can use newsletters, email blasts, fliers, and social media such as Facebook and Twitter to engage your students and keep them informed whether you have a small or large population of international students.

Annette Whalley, The University of Texas at Austin
Gidget Pettibon, Midwestern State University KC: CCP Room: 202B

Connecting Study Abroad and Careers

This session examines how study abroad can influence success in the job market. It suggests strategies for students to reflect on their study abroad experiences and employ them effectively in their job search. It presents perspectives from study abroad offices, career services, and human resources and recruitment services about the job search and employer attitudes toward international experience.

Anne Mahoney, Oklahoma State University
Lydia Arledge, Disney Worldwide Services, Inc.
Maggie Miller, Georgia State University KC: EA Room: 208B

Back from Abroad – Now What? Best Practices in Alumni Relations and Recruitment in Education Abroad

Students who have recently returned from study abroad can be a valuable resource for education abroad offices. This session will focus on ways to successfully engage and utilize returnees while encouraging cultural reflection. We will provide tools on innovative programming ideas, illustrate examples of using technology and social media, and provide curricular ideas for developing a returned study abroad course.

Laura Braun, Clemson University
Kara Pike, University of North Carolina Wilmington
Laura Semenow, University of Tulsa
Tracy Rundstrom Williams, Texas Christian University KC: EA Room: 202A

International Recruitment - Strategies that Work

This session will address the following questions: How do you start working with international recruitment agents? What is an education agent? Why are they important? What can agents do for you and what can they do for students? What should agents NOT do for you? Topics will also include training agents, compensating your agents, and best practices for enrolling more international students within one year.

Jennifer Chadwick, North Georgia College & State University
Ian Cann, ICEF USA KC: IEM Room: 208A

Improving Intercultural Communication for International and Study Abroad Students

This session will provide activities for individuals working with international students and domestic students who plan on studying abroad to help them improve their intercultural communication skills. Participants will engage in four group activities that they will be able to utilize with their students to make them aware of the following categories: cultural perspectives, differences in values, the impact of cultural socialization on perception, and factors in cultural adjustment. By the end of this session participants will be familiar with ways to best utilize the training materials and be acquainted with effective strategies to engage pertinent populations in intercultural training.

Carol Giardina, Augusta State University
Jana Sandarg, Augusta State University
LaTesha Charbonnet Gonzales, University of New Orleans
Jeff Hutcheson, ELS Language Center KC: Pan-NAFSA Room: 204

SESSION DESCRIPTIONS

SESSION BLOCK: VIII (CONT.)

THURSDAY

9:00AM–10:15AM

Empowering Advisors to Workplace Satisfaction

Calling all advisors! Ready to let loose at NAFSA? Make time for yourself, get your groove on, and be empowered to control your own workplace satisfaction. Learn strategies to positively affect your work environment and staff morale for little-to-no cost. You will leave the session ready to make a difference in your own life. It's time to get excited!

Matthew Jones, The University of Texas at Austin

Tina Fiet, The University of Texas at Austin

Brendan Richardson, International Studies Abroad (ISA)

KC: Pan-NAFSA

Room: 203

A Qualitative Study: Transitioning from ESL to a University - Results & Recommendations

Students who studied ESL at the Georgia Tech Language Institute, who are now studying at US universities, were surveyed about the transition period from ESL to the university setting. Learn the results of this qualitative study and hear recommendations, based on real life success stories, to help students adjust to university life. Recommendations will include both administrative and curriculum-related changes that can be incorporated to help students make this transition.

Anna Potter, Georgia Institute of Technology, Language Institute

Karen Tucker, Georgia Institute of Technology, Language Institute

KC: TLS

Room: 201B

PUERTO RICO: DID YOU KNOW...

- Prior to Christopher Columbus discovering the island of Puerto Rico in 1493, it was called Borinken by the local Taino Indians.
- Juan Ponce de Leon was the first Governor of Puerto Rico, and is buried in the Cathedral of San Juan Bautista in San Juan.
- The Puerto Rico flag is the same as the flag of Cuba, except the colors are inverted.
- The island of Puerto Rico is the smallest of the Greater Antilles, the biggest of the Lesser Antilles, and creates one point of the famous Bermuda Triangle.
- With 3.95 million residents in 3,500 square miles, Puerto Rico has a higher average population density than any U.S. state.
- Famous Puerto Ricans include Ricky Martin, ChiChi Rodriguez, Roberto Clemente, Raul Julia, Jose Feliciano, Tito Puente, and Rita Moreno.
- Puerto Rico is the world's leading rum producer, home to famous local brand Don Q as well Bacardi, originally from Cuba.

NAFSA Region III 2013 Conference **October 21 – 24, 2013** **Rogers, Arkansas** **Embassy Suites**



Off-site at the beautiful Crystal Bridges Museum

POSTER FAIR PRESENTATIONS - PAGE 1

A Key to Gaining Administrative Support for Study Abroad

- Bradley Bowers, Barry University

An Introduction to the Internationalization of Higher Education in China and IGEC Program

- Cai Mantang, Peking University
- Kevin Zhang, Chinese Service Center for Scholarly Exchange

Are Your English Requirements Setting Your Students Up To Fail?

- Rus Kiser, ELS Language Centers - Oklahoma City

A-Z of University Advising

- Nathan Herrington, ELS Language Centers/Houston
- Brenda Winch, ELS Language Centers/Houston

Benchmark Credentials in the Cuban Education System

- Lou Nunes, Academic Evaluation Services, Inc.

Beyond Sightseeing: The Learning Effects of Excursions within a Study Abroad Context

- Devon Donohue-Bergeler, University of Texas at Austin

Bridging the Island: Cultural Learning on Short-Term Study Abroad Programs

- Irene Ziegler, University of New Orleans
- Amanda C. Maurer, University of South Florida

Collaborative Marketing to Meet Students on Their Level

- Jessica Francis, Wake Forest University
- Vinithra Sharma, Wake Forest University

Collaborative Programming for Comprehensive Internationalization

- Sylvain Chabra, University of South Carolina
- Olga Grieco, University of North Texas

Dorms on Steroids: How to Develop, Improve and Maintain an International Living-Learning Community

- Laura Braun, Clemson University
- Elizabeth Dille, Presbyterian College

Efficiency Through Technology

- Larry Phu, University of Texas at Austin

Examining Best Practices for Resolving Issues on OPT, OPTX, and H1-B

- Grace Semple-Paul, J.D.,
University of Houston--Main Campus
- Anne Githae, J.D.,
University of Texas Medical Branch

Extraordinary and Outstanding: Green Cards for Postdocs and Researchers

- Adam Frank, Leavy, Frank & Delaney, LLC
- Brendan Delaney, Leavy, Frank & Delaney, LLC

Finding Support for the LGBT International Student

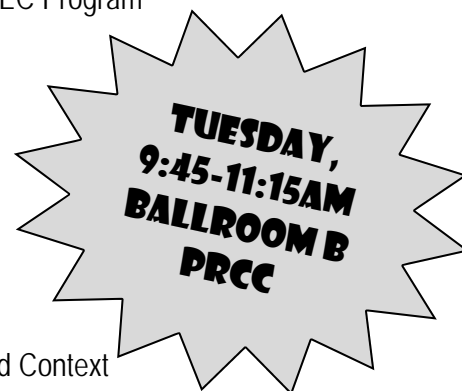
- Mike Waldie, University of Arkansas
- Regina Henry, Oklahoma State University

Global Partner Certificate: Engaging Campus Staff and Faculty

- Kristen Hagen, Florida State University

Graduation Sash Ceremony for International Students

- Thora Collymore, University of South Florida
- Monja Mihajlovic, University of South Florida



You're Going Places.

Multi-Country	Hawaii
Argentina	Ireland
Australia	Italy
China	Mexico
Costa Rica	New Zealand
Czech Republic	Peru
Ecuador	Scotland
England	South Africa
France	Spain
Ghana	Thailand

CISabroad.com

semester & year abroad • summer & january abroad • intern abroad

POSTER FAIR PRESENTATIONS - PAGE 2

Guatemala: An Overview of the Educational System

- Freda Clement-Willis, Academic Evaluation Services, Inc.

H-1Bs and Beyond: Current H-1B policies and Alternative Visas

- Adam Frank, Leavy, Frank & Delaney, LLC
- Brendan Delaney, Leavy, Frank & Delaney, LLC

How to Complete the Form I-9, Especially for Students in F-1, J-1, and OPT Status

- Avalyn Langemeier, FosterQuan, LLP

How to Start from the Ground Up

- Noreen Baker, University of West Florida
- Maria Anastasiou, USC

International Education Administrators Fulbright Program: Japan & Germany

- Rhonda Hinkle, Institute for Study Abroad, Butler University
- Alisa Meador, University of Tennessee

I've Been Elected President! Now what? A Guide to Advising International Student Organizations

- Regina George, University of Mississippi

Maintaining Balance While Maintaining a One Person International Office

- Erin Brick-McManus, Life University

Measuring International Awareness of Short-term Education Abroad Program Participants

- Paul Geis, Elon University
- Mark Kurt, Elon University

Multicultural Expo: Bringing Together Campus and Community to Celebrate Diversity

- Kesha Baoua, Hendrix College

NAFSA Immigration Advising Resource Toolbox

- Regina Henry, Oklahoma State University
- Robin Catmur, University of Georgia

NanoJapan: International Research Experience for Undergraduate Engineering and Physics Students

- Sarah Phillips, Rice University

Obtaining a Visa in Your Passport – Avoid the Pitfalls

- Avalyn Langemeier, FosterQuan, LLP

Orientation Before the Flight: Web 2.0 for the Newly Arriving English Learner

- Sherry Warren, English Programs for Internationals
- Julie Medlin, English Programs for Internationals at University of South Carolina

Peace Corps Master's International: The Ultimate Field Experience in Public Health

- Stephen Church, University of South Florida College of Public Health

Preparing the Solo Student for Study, Internship or Volunteer Abroad

- Robin Mladinich, Georgia Tech, Director, Work Abroad Program

Recruit, Retain, Refer - Simple Surefire Steps to Mastering the Three R's of Successful Student Recruitment, Retention and Customer Referrals!

- Simon Smith, ELS Language Centers-Fort Smith
- Maria Quillen, ELS Language Centers-Tampa

Secondary Education Systems in the Americas

- Kurt Baumbach, Academic Evaluation Services

Secondary Schools: Reaching Out

- Sheena Connell, University of the Incarnate Word

State Immigration Laws: A Case Study

- Stacye Fraser Thompson, University of Alabama at Birmingham
- Helen Dolive, Birmingham Southern College

POSTER FAIR PRESENTATIONS - PAGE 3

Teacher Education: Language, Literature, Culture and Study Abroad Projects

- Graciela Helguero-Balcells, Florida Atlantic University
- Dr. Lucia Buttarò, Adelphi University

The Global Reciprocity Fund: Giving Back in a Meaningful Way

- Blake Hart, SIT Study Abroad
- Mory Pagel, SIT Study Abroad

Undergraduate Research Abroad: Bringing the Experience Back Home

- Blake Hart, SIT Study Abroad

We Love Taxes! Creating and Implementing A Non-°©-Resident Tax Assistance Program

- Ashley Wichman, University of Georgia

What's New with Fulbright?

- Vijay Renganathan, Institute of International Education: The Fulbright Team
- Emily Bosio, Institute of International Education-Fulbright Program

Working with External Organizations: Savvy, Politics, Communication

- Alan Lytle, University of Arkansas - Little Rock
- Allyson Douglass, University of Arkansas - Little Rock



EXHIBITORS, ADVERTISERS AND SPONSORS

COMPANY	PHONE	EMAIL
Academic Evaluation Services	(813) 374-2020	drloununes@gmail.com
Academic HealthPlans, Inc.	(855) 247-2273	cahndler.sweeny@apcare.com
Academic Programs International (API)	(512) 600-8900	jeramy.johnson@apistudyabroad.com
American Institute For Foreign Study	(203) 252-1730	fvonschmeling@aifs.com
Arcadia University	(215) 385-0919	karrrt@arcadia.edu
Banco Santander	(787) 281-2000	Benjamin.velez@bspr.com
CAPA International Education	(857) 207-3320	srommelfanger@capa.org
Casterbridge Tours	(540) 885-4564	blewis@casterbridgetours.com
CEA Global Education	(480) 375-2713	Tim.Boubek@gowithcea.com
CIEE Council on International Educational Exchange	(207) 553-4221	bparker@ciee.org
CISabroad	(413) 582-0407 x5018	EMickewicz@cisabroad.com
Compañía de Turismo Puerto Rico	(787) 821-2400	Seepuertorico.com
Cultural Insurance Services International (CISI)	(866) 866-4691	shopkins@culturalinsurance.com
Destination Partners	(239) 963-4282	michelle@destinationpartners.net
Edge Hill University	(817) 570-0805	clarkejane@aol.com
Educational Credential Evaluators, Inc. (ECE)	(414) 270-3649	jmeyers@ece.org
Educational Perspectives, NFP	(312) 421-9300	kwarren@edperspective.org
EF College Study Tours	(314) 484-8621	justin.bruegenhemke@ef.com
ELS Language Centers	(609) 750-3585	jhutcheson@els.edu
Envisage International Corporation	(904) 247-1387	dsears@envisageinternational.com
Experiential Learning Abroad Programs	(512) 480-8522	lindsey@myelap.com
German Academic Exchange Service - DAAD	(212) 758-3223	fawzy@daad.org
Global Credential Evaluators	228-875-8960	margaret@gceus.com
GlobalLinks Learning Abroad	(910) 232-4743	eadams@globallinksabroad.org
Go-Today	(425) 527-8050 x2601	david.gudgel@europeexpress.com
Hollins University	(540) 362-6214	millerl@hollins.edu
Hotcourses Inc.	(617) 359-4901	seth.gummere@hotcourses.com
HTH Worldwide	(610) 724-2773	pvenable@hthworldwide.com
ICEF	(626) 796-3655	icann@icef.com
i-graduate USA LLC	(202) 455-0959	Elizabeth.gorsuch@i-graduate.org
IELTS International	(323) 255-2771	acarter@ieltsusa.org
Insurance For Students, Inc.	(954) 771-5883	cboode@insuranceforstudents.com
International Education Evaluations, Inc.	(704) 772-0109	admin@foreigntranscripts.com
International SOS Assistance, Inc.	(215) 313-7983	laura.angelone@internationalosos.com
International Student Insurance.com	(904) 247-1387 x105	akeller@internationalstudentinsurance.com
International Student Protection	(212) 693-3717	jeff@jdeutschassociates.com
International Studies Abroad	(512) 480-8522	nzappitelli@studiesabroad.com
ISO - Student Health Insurance	(212) 262-8922	kziv@isoa.org
Josef Silny and Associates, Inc.	(305) 273-1616	tiera@jsilny.com
Lewer Insurance	(816) 753-4390 x148	jcrawford@lewer.com
Lexia International	(617) 945-2621	whyndman@lexiaintl.org
Minds Abroad	(877) U ABROAD	carl@mindsabroad.com

List includes information as of September 25, 2012.

EXHIBITORS, ADVERTISERS AND SPONSORS

COMPANY	PHONE	EMAIL
NAFSA Office	(202) 495-2591	marias@nafsa.org
Ogletree Deakins Nash Smoak & Stewart, P.C.	(404) 260-1482	terra.martin@ogletreedeakins.com
Peer Transfer Education	(401) 378-0114	sharon@peertransfer.com
Plaza Las Americas	(787) 767-5202	en.plazalasamericas.com
Polytechnic University of Puerto Rico	(787) 754-8000 x320	tcardona@pupr.edu
ProWorld	(866) 724-5455	mike@proworldvolunteers.org
Rice University	(713) 348-6095	abaker@rice.edu
Sistema Universitario	(787) 669-0751	www.suagm.edu
SIT Study Abroad	(802) 258-3492	mory.pagel@sit.edu
Southern Methodist University	(214) 768-4721	mclarke@smu.edu
Spantran Evaluation Services	(281) 795-9095	pmenendez@spantran.com
Student Universe	(617) 321-3136	eric@studentuniverse.com
Study in the USA	(206) 622-2075	shaharзад@studyusa.com
T.W. Lord & Associates	(800) 633-2360	tommy@twlord.com
Terra Dotta	(877) 368-8277	michelle@terraddotta.com
The Center for Cross-Cultural Study	(413) 256-0011	jerry@cccs.com
The School for Field Studies	(978) 219-5115	nanderson@fieldstudies.org
Universidad Americana-UAM	(505) 2278-3800x5500	maryhelen.espinosa@uam.edu.ni
University of Glasgow	(303) 963-6814	leann.schmitz@glasgow.ac.uk
Universidad del Este	(787) 257-7373	ue_international@suagm.edu
Universidad Metropolitana	(787) 766-1717	zvega@suagm.edu
Universidad del Turabo	(787) 743-7979	edmendez@suagm.edu
University Studies Abroad Consortium	(775) 784-6569	mikenieto@usac.unr.edu
Wake Forest University	(336) 758-5938	dukest@wfu.edu
Wallach & Company, Inc.	(540) 687-3166	rwallach@wallach.com



Aida Castañer-Martínez,
Chair



Pura Santiago-Co-Chair
UPR- Retired



Mayra López, Universidad
Politécnica de Puerto Rico

A HUGE THANK YOU TO DR. AIDA CASTANER-MARTINEZ AND THE PUERTO RICO GROUP OF VOLUNTEERS!

University of PR, Río Piedras Campus

Office of the Assistant Dean of

International Affairs:

Luis Irizzary, Associate Dean

Alma D. Ramos

Lillian Nieves

Elba Reyes

José Rodríguez

María V. Torres

Lyndsay Vazquez

Jasmil Santana (UPR-Cayey)

Pedro Padilla

(UPR-Río Piedras, School of Law)

Dra. Zulma Vélez de Urrutia,

(Retired, UPR)

Adria Bermudez, Deanship for

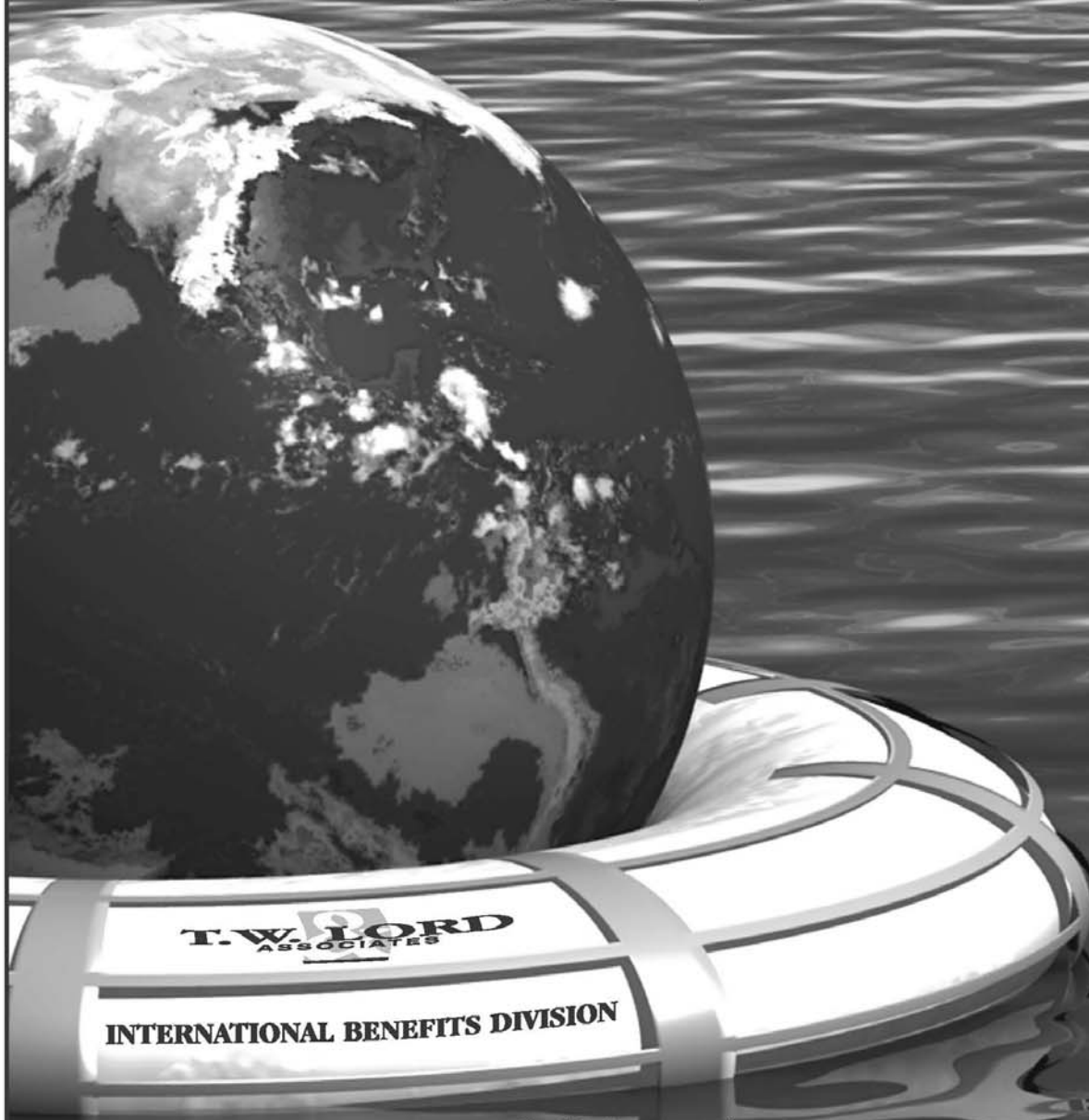
Academic Affairs, UPRRP

Ana G. Méndez University System

Dr. David Méndez

Peace Of Mind

Since 1955



Quality Insurance from
T.W. Lord & Associates
25 Dodd Street
Marietta, Georgia 30060, USA
1-800-633-2360
info@twlord.com

REGION III TEAM MEMBERS

Chair

Claudia Graves
Director, International Student and Scholar Services
Southern Methodist University
214-768-4477 cgraves@smu.edu

Past Chair

Samantha L. Slaight
Director, ESOL/International Student Services
North Lake College
972-273-3154 sslaight@dcccd.edu

Chair Elect

Diana Klinghagen
Counselor/International Student Advisor
Tulsa Community College
918-595-7533 dklingha@tulsacc.edu

Registrar

Elle Shroyer
International Admissions Officer
University of Oklahoma
405-325-2252 elle.shroyer@ou.edu

Treasurer

Liz Branch
Assistant Director of International Services
Texas Christian University
817-257-7292 l.branch@tcu.edu

Communications Liaison

Laura Semenow
Assistant Director
University of Tulsa
918-631-3226 laura-semenow@utulsa.edu

Two-Year Institution Liaison

Sunny Garner
Coordinator of International Student Services
Oklahoma City Community College
405-682-7884 sgarner@occc.edu

Regulatory Ombudsperson – Scholar and Employment Issues

Kathleen C. Gasparian, Esq.
Senior Associate
David Ware & Associates, LLC
504-830-5900

Regulatory Ombudsperson - Student Issues

Regina Henry
Coordinator of Immigration
International Student Services
Oklahoma State University
405-744-5459 regina.henry@okstate.edu

KC Education Abroad (EA) Liaison

Laura Moix
UA Faculty Led and Exchange Coordinator
Office of Study Abroad & International Exchange
University of Arkansas
479-575-7582 lmoix@uark.edu

KC International Student and Scholar Services (ISSS) Liaison

Meg Morgan
Associate Director, International Student Services
University of Texas at Dallas
972-883-4058 meg.morgan@utdallas.edu

Intensive English Programs Liaison

LaTasha Charbonnet Gonzales
Coordinator, Intensive English Language Program
University of New Orleans
504-280-5530 lcharbon@uno.edu

Conference Planner

Sue Marlay
Retired, Arkansas State University
870-972-0643 smarlay@astate.edu

Conference Planner Apprentice

Gloria A. Flores Passmore
Associate Director of Recruitment and Sponsored Student Programs
Graduate School
University of Arkansas
479-575-6809 gflores@uark.edu

Development Chair

Jane Clarke
US Associate Director for Study Abroad
Edge Hill University
214-503-8798 clarkejane@aol.com

Admissions Liaison

Catherine Roueche-Herdman
Associate Director of Admissions
Office of Admissions
Texas A&M University
979-458-5124 catherinerh@tamu.edu

State Liaison - Arkansas

Lianne Thompson
Assistant Director, International and Multicultural Student Services
Arkansas Tech University
479-964-0832 lthompson10@atu.edu

State Liaison - Louisiana

Kristy Magner
International Student Services Coordinator
Center for International Education
Loyola University New Orleans
504-864-7550 kmagner@loyno.edu

State Liaison - Oklahoma

Steve Lanier
Coordinator of International Students/Advisor
University of Central Oklahoma
405-974-2362 slanier1@uco.edu

State Liaison – North Texas

Kelli Anderson
Director, Study Abroad
University of Texas at Arlington
817-272-1120 kellia@uta.edu

State Liaison – South Texas

Krista D. Tacey
Director, International Student Services
Texas A&M University
979-845-1824 ktacey@oar.tamu.edu

REGION VII TEAM MEMBERS

Chair

Heather Housley
Director, International Student and Scholar Services
Georgia State University
404-413-2070 heatherh@gsu.edu

Chair Elect

Leigh Poole
Associate Director for International Student Life, Department of Student Life
University of Georgia
706-542-5867 lapoole@uga.edu

Past Chair

Jeff Hutcheson
Assistant Director, U.S. Operations
ELS Language Centers
609-750-3585 jhutcheson@els.edu

Regional Registrar

Marci Angevine
International Student & Scholar Advisor
Vanderbilt University
615-322-0203 clarkejane@aol.com

Treasurer

Maria Sophocleous
English Program for Internationals
University of South Carolina
803-777-7462
maria_sophocleous@epi.sc.edu

Communications Coordinator

Holly Williams
Senior Advisor/SEVIS Coordinator
Intl. Student and Scholar Services
Georgia State University
404-413-2070 hwilliams11@gsu.edu

Two-Year Community College Rep

Betty Jensen
International Student Services Coordinator
Tallahassee Community College
850-201-8457 Jensenb@tcc.fl.edu

Regulatory Ombudsman for Student Issues/Conference Coordinator

Sylvia Shortt
University of West Georgia
678-839-4780 sshortt@westga.edu

Regulatory Ombudsman for Scholar Issues

Robin Catmur
Director, International Student, Scholar and Immigration Services
University of Georgia
706-542-2900 rcatmur@uga.edu

KC Education Abroad (EA) Liaison

Jennifer Engel
Director, Study Abroad
University of South Carolina
803-777-7557 JENGEL@mailbox.sc.edu

KC International Student and Scholar Services (ISSS) Liaison

Tammy Rosner
Assistant Director, International Student & Scholar Services
Georgia State University
404-413-2070 tammyrosner@gsu.edu

State Rep - Alabama

Helen Dolive
International Student Advisor, Sklenar Center for International Programs
Birmingham-Southern College
205-226-4658 hdolive@bsc.edu

State Rep - Florida

Marcia Taylor
M.A., Director, International Services, International Affairs
University of South Florida
813-974-5206 taylor@iac.usf.edu

State Rep - Georgia

Jeff Jones
Director, International Student Services
Savannah College of Art and Design
912-525-7301 jbjones@scad.edu

State Rep - Mississippi

Dr. Lokesh Shivakumaraiah
Interim Manager of International Education
Mississippi State University
662-325-8632 lokesh@saffairs.msstate.edu

State Rep - North Carolina

Kevin Morrison
Director of Study Abroad & Assistant Dean,
Isabella Cannon International Center
Elon University
336-278-6698 kmorrison6@elon.edu

State Rep - Puerto Rico

Dr. Aida Castaner-Martinez
Professor, Department of Graduate Studies
Fulbright Campus Representative
Faculty of Education
University of Puerto Rico
760-0000, ext. 1-2928, 1-2304
Aida.castaner@upr.edu

State Rep - South Carolina

Lindsey Wallace Hill
Immigration Specialist and International Student Advisor, The International Center of Winthrop University
803-323-2133 hilll@winthrop.edu

State Rep - Tennessee

Joann Ng Hartman
Assistant Director, Center for International Education
University of Tennessee, Knoxville
865-974-3177 joann@utk.edu



REGIONAL NAFSANS SERVING IN NATIONAL POSITIONS

REGION III

Mary Beth Butler	Patricia Parrapese
Lindsay Calvert	Carol Martin
Dawn Cepica	Laura Moix
Jane Chandler	Cory Owen
Robert Crosier	Erika Payan Zanetti
Kathleen Gasparian	Minita Santizo
Anne Githae	Loveness Schafer
Adam Harold	Monica Sharp
Regina Henry	Samanthia Slaight
Mutombo Kabasele	Harlan Smith
Kristy Magner	Michele Stelljes
Amy Makiyama	Rose Mary Valencia
Suzanne Marlay	

REGION VII

Patrice Barley	Jesse Lutabingwa
Sherif Barsoum	Mihaela Metianu
Giselda Beaudin	Joann Ng Hartmann
Sheri Beyer	Kavita Pandit
Soraya Campbell	Jane Rosenberg
Robin Catmur	Christina Sanchez
Darla Deardorff	Brad Sekulich
Sarah Egerer	Sylvia Shortt
Regina Foster	Liliane Spenlé
Joel Gallegos	Marcia Taylor
Jeff Hutcheson	Heidi White
Kristina Hubbard	Dlynn Williams
C. K. Kwai	Chunsheng Zhang
Sarah Langston	

*Rice University (celebrating 100 years during the conference)
Gratefully honors our excellent Region III leadership!*





SOUTHERN METHODIST UNIVERSITY INTERNATIONAL CENTER

Offering Services to International Students & Scholars

and

Providing Education Abroad Experiences for SMU Students

Congratulates

CLAUDIA GRAVES



SMU Director of International Student & Scholar Services

and

NAFSA REGION III CHAIR

Working together with the Chair of Region VII and a wonderful team of volunteers, Claudia has helped to make the Bi-regional Conference in San Juan, Puerto Rico a success!

NOTES

*no worries,
iNext has you covered!*



international insurance solutions

www.inext.com

For more information, please contact iNext Team
at info@inext.com or 1.855.578.6398.



Empowering successful **GLOBAL STUDENT MOBILITY**



ELS is the worldwide leader in internationalization for universities, with over 50 years of student recruitment expertise.

ELS International Pathways are designed to meet the recruitment needs of institutions competing for students in the global marketplace. Leverage our global marketing and recruitment network. ELS is the largest provider of on-campus English for Academic Purposes instruction, recognized as proof of English competency by 650 universities, with over 16 study locations in NAFA Regions III and VII.

ELS offers an in-depth, holistic foundation which delivers highly qualified international students who are well prepared to achieve academic success.

FOUR OPTIONS to Partner with ELS:

- Join the ELS University Conditional Admission Network
- Become a member of an ELS Recruitment Partnership Plan
- ELS Direct Entry Pathway Center on your campus
- Become a Performance-based Partner with customized solutions

LEADER IN INTERNATIONAL EDUCATION SINCE 1961

Your Strategic Partner in International Student Recruitment
International Visibility - Quality Representation - Localized Communication

FOR MORE INFORMATION

Hosting an ELS Language Center on your campus,
contact: **Ms. Julie Blevins** jblevins@els.edu

Recruiting degree candidates from around the world,
contact: **Ms. Susan Kassab** skassab@els.edu

ELS.edu UniversityGuideOnline.org InternationalStudentRecruitment.org