

# Visa Updates

NAFSA: Association of International Educators

Regulatory Practice Committee &  
Consular Affairs Liaison Subcommittee

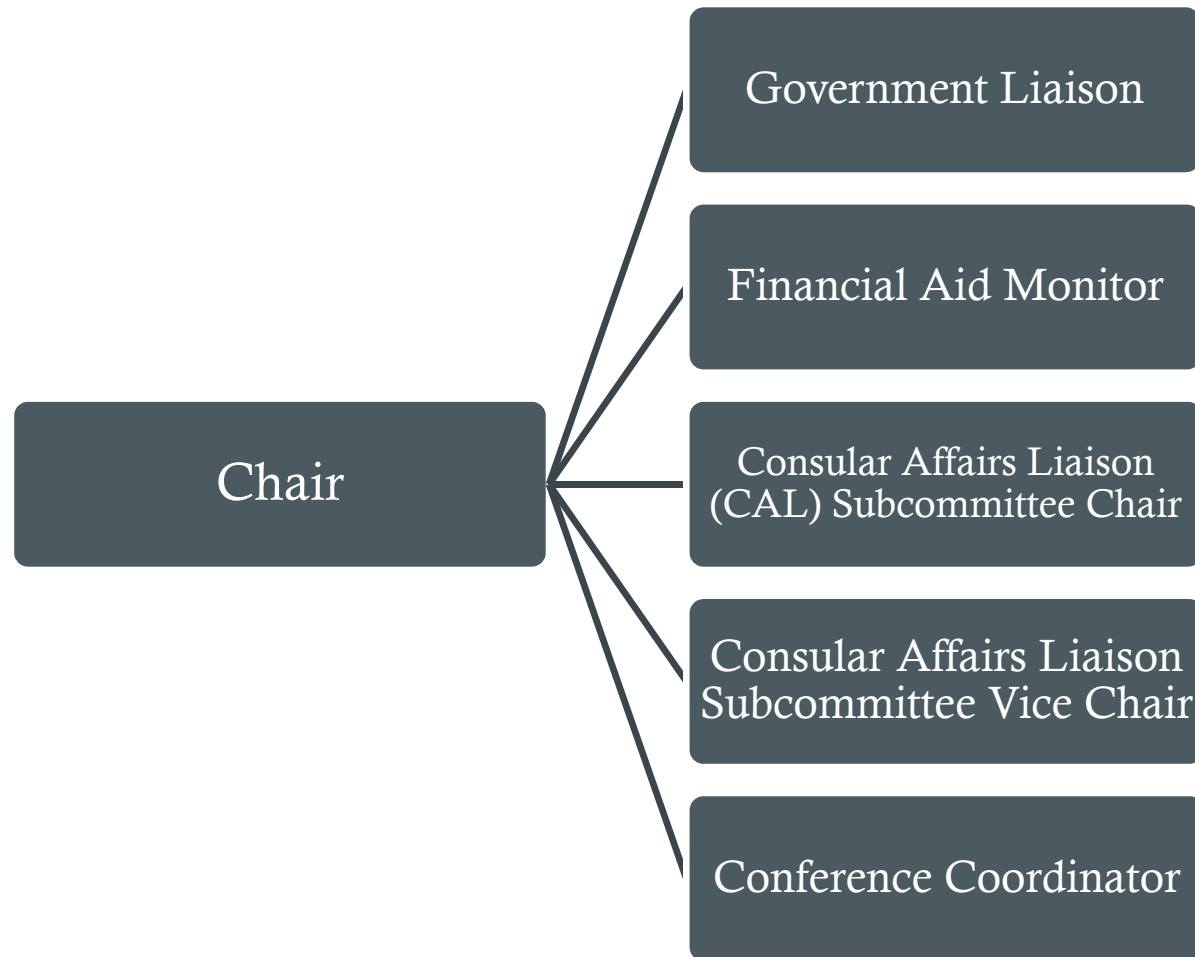


*NAFSA Regional Conferences 2012*

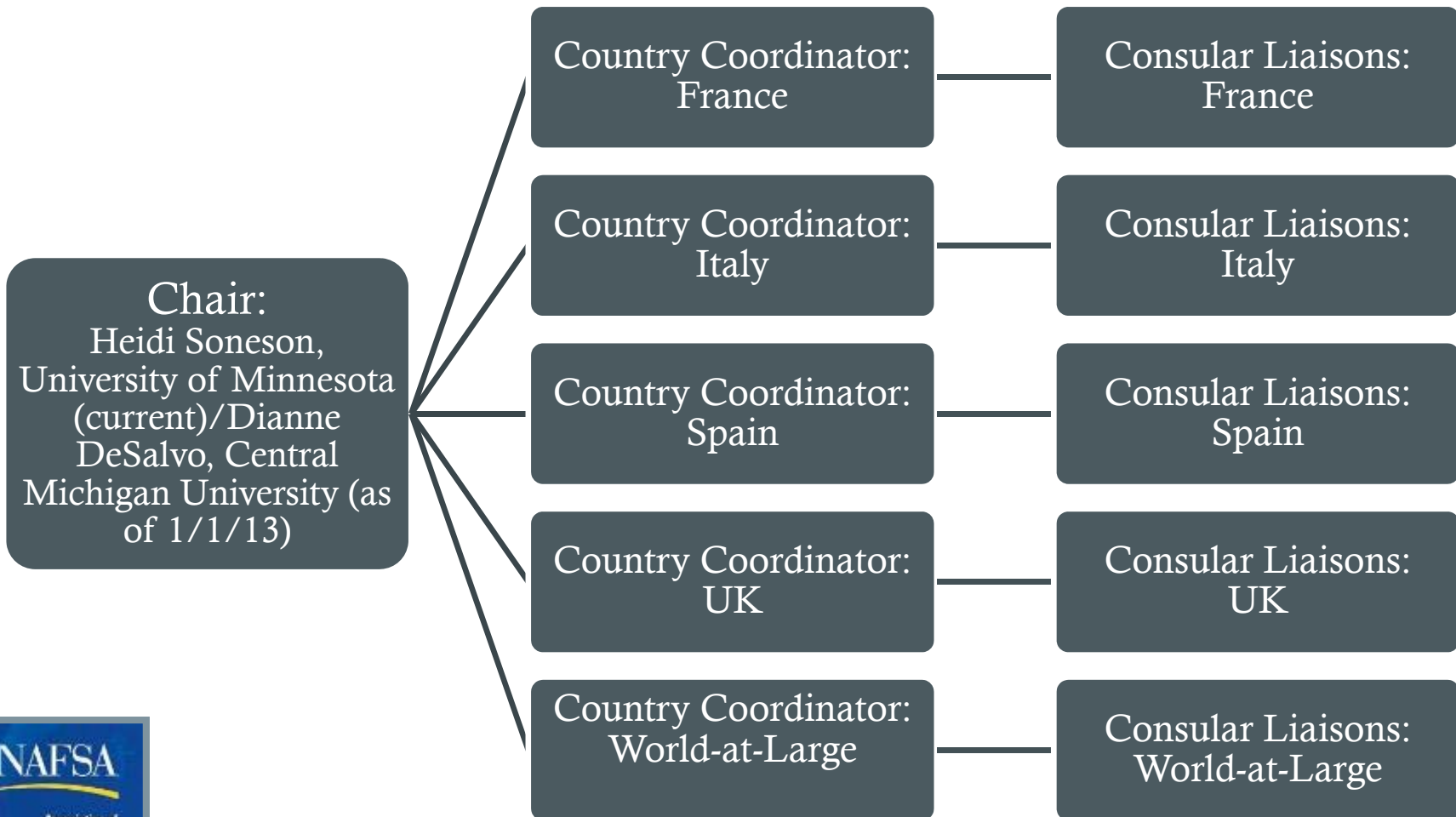
# Presenters:

- Giselda Beaudin, Rollins College
  - Consular Liaison to the French consulate in Miami
- Regina Foster, Clemson University
  - Consular Liaison to the Spanish consulate in Miami
- Olga Catelena, Texas A&M University
  - Italy and Russia visas
- Wendy Sheets, University of Tulsa
  - UK and Italy visas

# NAFSA: Regulatory Practice Committee



# NAFSA: Consular Affairs Liaison Subcommittee





## INTO THE WILD

Observing Wildlife in Botswana  
Launches Career



NAFSA  
**2013** Annual  
Conference  
& Expo  
May 26-31 · St. Louis, MO

### Call for Proposals

Contribute to the field of international education by presenting a poster at NAFSA's 65th Annual Conference & Expo in St. Louis, Missouri, May 26–31, 2013. The deadline for submission is December 10.

[Watch a Proposal Tutorial](#)

(1 of 2)





## FIND RESOURCES

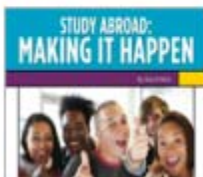
### Supporting Education Abroad



#### Professional Networks

Take advantage of the professional development opportunities NAFSA offers to new, mid-career, and experienced education abroad professionals.

[LEARN MORE >](#)



#### Study Abroad: Making It Happen

A resource for any education abroad office, this publication helps students explore the possibilities of study abroad, along with relevant advice and links to resources for planning.

[LEARN MORE >](#)



#### Visa Help

Submit questions to get help on visa issues for U.S. students and faculty studying abroad.

[LEARN MORE >](#)

ADVANCING PUBLIC  
POLICY FOR  
INTERNATIONAL  
EDUCATION

INTERNATIONALIZING  
HIGHER EDUCATION

SUPPORTING  
INTERNATIONAL  
STUDENTS &  
SCHOLARS

SUPPORTING STUDY  
ABROAD

KNOWLEDGE  
COMMUNITIES

[Explore the Education Abroad KC](#)



## FIND RESOURCES

### Visas For Education Abroad

The following information is designed to assist education abroad advisers as they guide their students to obtain a student visa to study abroad. NAFSA's EA Consular Affairs Liaison Subcommittee members review these pages regularly for accuracy, but the consulate to which the student applies for a visa may change its procedures. Students and advisers should confirm specific procedures with each relevant consulate.

Additional general information relevant to education abroad is available under [NAFSA Regulatory Information](#).

NAFSA has two EA Visa subcommittees:

- The [Consular Affairs Liaison Subcommittee](#) (46kb ) is available to assist you with your visa questions. [Submit questions through EA Visa Help.](#)
- The [Visa Education Subcommittee](#) (65kb ) provides educational resources about the visa application process.

### COUNTRY-SPECIFIC INFORMATION



Cuba      France      Italy      Spain      United Kingdom

Select another Country

### GENERAL VISA FAQs

Keep up-to-date on the latest requirements for acquisition of foreign visas for study abroad.

ADVANCING PUBLIC  
POLICY FOR  
INTERNATIONAL  
EDUCATION

INTERNATIONALIZING  
HIGHER EDUCATION

SUPPORTING  
INTERNATIONAL  
STUDENTS &  
SCHOLARS

SUPPORTING STUDY  
ABROAD

#### EA VISA HELP

Submit your question to get help on specific visa issues for U.S. students and faculty studying abroad.



[EA Visa Help](#)

#### EA VISA RESOURCES

[Visa Education Subcommittee](#)

Visit: [www.nafsa.org/eavisas](http://www.nafsa.org/eavisas)



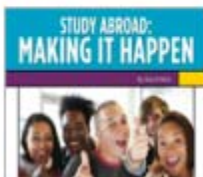
## FIND RESOURCES

### Supporting Education Abroad



#### Professional Networks

Take advantage of the professional development opportunities NAFSA offers to new, mid-career, and experienced education abroad professionals.

[LEARN MORE >](#)

#### Study Abroad: Making It Happen

A resource for any education abroad office, this publication helps students explore the possibilities of study abroad, along with relevant advice and links to resources for planning.

[LEARN MORE >](#)

#### Visa Help

Submit questions to get help on visa issues for U.S. students and faculty studying abroad.

[LEARN MORE >](#)

ADVANCING PUBLIC  
POLICY FOR  
INTERNATIONAL  
EDUCATION

INTERNATIONALIZING  
HIGHER EDUCATION

SUPPORTING  
INTERNATIONAL  
STUDENTS &  
SCHOLARS

SUPPORTING STUDY  
ABROAD

KNOWLEDGE  
COMMUNITIES

[Explore the Education Abroad KC](#)





### Education Abroad

Submit questions to get help on specific visa issues for U.S. students and faculty studying abroad.

[Request Visa Help](#)

### International Students & Scholars

Inform the Regulatory Practice Committee about emerging trends or government obstacles for studying abroad or incoming students and scholars.

[Report an Issue](#)

Contact your Regulatory Ombud for assistance with specific immigration cases at USCIS Service Centers. **Before submitting your request:**

[Get Liaison Help](#)

1. [Look for answers in the NAFSA Adviser's Manual](#)
2. [Follow the steps in NAFSA's suggested procedures](#)



## Education Abroad Visa Help

### Part I - Adviser's Information

Jeremy Doughty (jeremy.doughty@snc.edu)  
St. Norbert College

100 Grant Street, Bemis 321  
De Pere, WI 54115-4040  
USA  
T: (920) 403-3433 F: (920) 403-4083

### Part II - Required Information

#### Visa Information

This issue relates to:

- France
- Italy
- Spain
- United Kingdom
- Other

← Select one of the top four countries or any "other" country.

Choose one issue - visa a

or other issue.

#### Visa Application

--select an option

Specify details if necessa

- ✓ --select a country
- Afghanistan
- Aland Islands
- Albania
- Algeria
- Andorra
- Angola
- Anguilla
- Antarctica
- Antigua and Barbuda
- Argentina

#### Appointment

ion

necessary

#### Other Issue

Specify details

#### Part IV - Additional Details for Visa Issue

What actions, if any, have been taken by the student and/or adviser to resolve this issue?

1000

If the consulate has responded provide more details

1000

Enter up to 1000 characters into each text field. The remaining space is shown as you type.



Additional information?

1000

Submit

Visit: <http://www.nafsa.org/eavisahelp>



# FRANCE

## Country Coordinator

Jason Sanderson

Georgetown University



## Regional Liaisons

- *Atlanta*: Liliane Spenle
- *Boston*: Emily Brazer
- *Chicago*: Janis Halpern
- *Houston*: Jane Chandler
- *LA*: TBD
- *Miami*: Giselda Beaudin
- *NY*: Rebecca James
- *SF*: Telisa Gunter



## • CampusFrance Updates

- Admission letters must have the exact program dates and the contact information of the U.S. study abroad advisor
- Fees increase to \$100 on October 1 for students applying to be in France for spring 2013 semester
- A step-by-step [video](#) is now available for students



# FRANCE

## Country Coordinator

Jason Sanderson

Georgetown University



## Regional Liaisons

- *Atlanta*: Liliane Spenle
- *Boston*: Emily Brazer
- *Chicago*: Janis Halpern
- *Houston*: Jane Chandler
- *LA*: TBD
- *Miami*: Giselda Beaudin
- *NY*: Rebecca James
- *SF*: Telisa Gunter



## • Consulate Updates

- All consulates have harmonized the supporting documentation requirements, but students should check the website of their individual consulate for exact information
- Students may apply at the consulate of their home or school address jurisdiction
- Bank statements showing sufficient funds (\$820 per month in France) are required
  - Required amounts may be adjusted for students on documented financial aid



# FRANCE

## Country Coordinator

Jason Sanderson

Georgetown University



## Regional Liaisons

- *Atlanta*: Liliane Spenle
- *Boston*: Emily Brazer
- *Chicago*: Janis Halpern
- *Houston*: Jane Chandler
- *LA*: TBD
- *Miami*: Giselda Beaudin
- *NY*: Rebecca James
- *SF*: Telisa Gunter



## • OFII Updates

- Single-semester students (91-180 days) may choose at the time of application whether or not to go through OFII
  - The visa fee (50€) is the same
  - Students who opt out of OFII cannot work in France, nor can they extend the validity of their visa on site
  - Students who opt out of OFII cannot change their status on-site and decide to go through the process
- Students studying in France longer than 180 days are required to go through OFII
- U.S. passport holders may be summonsed via email by OFII as part of a pilot program



# ITALY

## Country Coordinator

Karen Wardzala

Georgetown University



## Regional Liaisons

- *Boston*: Debbie Miller
- *Chicago*: Rosemary Sands
- *Detroit*: David Younger
- *Houston*: Erika Payán Zanetti
- *LA*: TBD
- *Miami*: Sarah Egerer
- *NY*: Suzanne Shane
- *Philadelphia*: Scott Keller
- *SF*: Noah Kuchins
- *Washington DC*: Karen Wardzala

## • General Updates

### • Student Visa Requirements

- >90 days
  - Visa is required
  - U.S. students and students from non-Schengen countries studying in Italy for more than 90 days must complete the National Visa Application Form
- <90 days
  - Visa is no longer required for U.S. students or international students from visa waiver countries on programs less than 90 days
  - International students who are from non-visa waiver countries (China, Haiti, etc.) must complete the Schengen visa application
- Consulates reserve the right to change their requirements and/or request additional information



## ITALY

### Country Coordinator

Karen Wardzala

Georgetown University



### Regional Liaisons

- *Boston*: Debbie Miller
- *Chicago*: Rosemary Sands
- *Detroit*: David Younger
- *Houston*: Erika Payán Zanetti
- *LA*: TBD
- *Miami*: Sarah Egerer
- *NY*: Suzanne Shane
- *Philadelphia*: Scott Keller
- *SF*: Noah Kuchins
- *Washington DC*: Karen Wardzala

- **Permesso di Soggiorno (Permit of Stay)**

- Total: 153,22€
  - 107,50€: Permit of Stay Tax Fee
  - 30,00€: Certified Mail
  - 14,62€: Official Stamp
  - 1,10€: Post Office Fee
- A photocopy of the information page of the passport is now necessary
  - Not the entire passport





# ITALY

## Country Coordinator

Karen Wardzala

Georgetown University



## Regional Liaisons

- *Boston:* Debbie Miller
- *Chicago:* Rosemary Sands
- *Detroit:* David Younger
- *Houston:* Erika Payán Zanetti
- *LA:* TBD
- *Miami:* Sarah Egerer
- *NY:* Suzanne Shane
- *Philadelphia:* Scott Keller
- *SF:* Noah Kuchins
- *Washington DC:* Karen Wardzala

## • Consulate Specific Updates

### • Philadelphia

- Updated web site with a new checklist
- Greater clarity
  - Health Insurance
  - Financial Means
  - Letter of Acceptance

### • New York

- Continues to require the student's address in Italy in the acceptance letter issued by the U.S. or host institution



# SPAIN

## Country Coordinator

Angela Perryman  
University of Kansas  
(thru 12/12)



## Regional Liaisons

- *Boston*: Lee Frankel
- *Chicago*: Danette Bontrager
- *Houston*: Minita Santizo
- *LA*: TBD
- *Miami*: Regina Foster
- *NY*: Tina Breakell
- *SF*: Holly Frohlick
- *Washington DC*: Katherine Kammann



## Recent Changes

- Students applying to Spanish Consulates in Miami and SF must schedule their appointment via VFS Global
  - VFS:  
<http://www.vfsglobal.com/Spain/usa/>
  - Study abroad advisors requesting batch processing should still work with their respective consulate for appointment



# SPAIN

## Country Coordinator

Angela Perryman  
University of Kansas  
(thru 12/12)



## Regional Liaisons

- *Boston*: Lee Frankel
- *Chicago*: Danette Bontrager
- *Houston*: Minita Santizo
- *LA*: TBD
- *Miami*: Regina Foster
- *NY*: Tina Breakell
- *SF*: Holly Frohlick
- *Washington DC*: Katherine Kammann



## Common Questions

- Background checks
  - Required for student stays of more than 180 days
  - Students may submit state-issued background checks from the their state of residence with the Apostille issued by the Secretary of State's office to fulfill the "Certification of absence of police records" requirement
- Batch processing
  - Allowed at all of the consulates
  - Your institution may develop a relationship with the consulate and ensure that visas are submitted in timely fashion
  - Check with your specific consulate



# SPAIN

## Country Coordinator

Angela Perryman  
University of Kansas  
(thru 12/12)



## Regional Liaisons

- *Boston*: Lee Frankel
- *Chicago*: Danette Bontrager
- *Houston*: Minita Santizo
- *LA*: TBD
- *Miami*: Regina Foster
- *NY*: Tina Breakell
- *SF*: Holly Frohlick
- *Washington DC*: Katherine Kammann



## Common Questions

- Internships
  - U.S. citizens participating in unpaid internships qualify for tourist/student visas dependent on the length of the internship
  - Check with your specific consulate
- Non-U.S. citizens
  - Most consulates accept Schengen and student visa applications from non-U.S. citizens
  - Student's F-1 visa should be valid before, during, and after the trip
  - Check with your specific consulate
- Consulates reserve the right to change their requirements and/or request additional information



## Country Coordinator

Laurence Tuccori  
Ohio University



## Regional Liaisons

- Shima Gorgani
- Amber Schneider
- Christine Menand



## • Two Student Routes

- Student Visitor
  - Less than 6 months (no work, internships or volunteering permitted)
  - \$129 for visa nationals effective April 06, 2012
- General Student Visa Under Tier 4 (for internships/volunteer work/work)
  - \$477
  - All applications are processed in NY
  - Tier 4: 28-day rule for proof of funds (funds must be in account for 28 consecutive days)
    - Applicable to visa nationals as U.S. citizens qualify for differentiation
  - CAS required as of February 2010
  - Submit original documents and passport
  - Guidance states to allow for 6-week minimum processing
    - Or choose Priority (\$150) or Premium (\$100) processing at time of application mailing
    - UKBA goal to process the majority of applications within 15 business days



### **Country Coordinator**

Laurence Tuccori  
Ohio University



### **Regional Liaisons**

- Shima Gorgani
- Amber Schneider
- Christine Menand



- Internships (50% rule)
  - Remain intact for university-level (66/33 for non-HEIs from April 2012)

### • **Other Routes**

- BUNAC
- Student research
  - Tier 5 with UK institution serving as sponsor (Government authorized change)
- Business visitor route
  - Faculty leading short-term programs less than 6 months



### **Country Coordinator**

Laurence Tuccori

Ohio University



### **Regional Liaisons**

- Shima Gorgani
- Amber Schneider
- Christine Menand



## • **UK Student Immigration Updates**

- From April 2012, all sponsors must achieve Highly Trusted Sponsor status
  - Interim limit on CAS until reached
  - Must reapply for HTS (new application and fee) every 12 months
  - London Metropolitan University
- QAA oversight required for study abroad programs without U.S. accreditation themselves or for U.S. full-degree programs in the U.K.
- Streamlined application process for students from low-risk countries attending HTS institutions
  - No longer need evidence of funding
  - Consulate could still request funding



### **Country Coordinator**

Laurence Tuccori

Ohio University



### **Regional Liaisons**

- Shima Gorgani
- Amber Schneider
- Christine Menand



## • **UK Student Immigration Updates**

- Maintenance fees increased to £1,000/month in London boroughs and £800/month elsewhere
- Can only count up to £1,000 in maintenance fees already paid to sponsor even if paid in full
  - Must show proof of funding unless from low-risk country
- English proficiency for students not holding a passport from a majority English-speaking country
  - HEIs can make own assessment and note in CAS





### **Country Coordinator**

Laurence Tuccori  
Ohio University



### **Regional Liaisons**

- Shima Gorgani
- Amber Schneider
- Christine Menand



## • **UK Student Immigration Updates**

- Students at universities and study abroad programs sponsored by overseas HEI (UK campus and third-party) retain current work permissions (50/50 rule still applies)
- Only postgraduate and Government sponsored students will be permitted to bring dependents

# OTHER COUNTRIES

## Country Coordinator

Beth Laux

University of Utah



## World-at-Large Liaisons

- Aaron Caplan (Perry International)
- Joe Sevigny (IES)
- Elizabeth Lauze (CIEE)
- Andy Kabasele (Univ of Houston)

- Reference the NAFSA EA visa web site for updates on recent visa changes for various countries
- Submit visa requests to EA Visa Help
  - Beth's team will attempt to help
  - [www.nafsa.org/eavisahelp](http://www.nafsa.org/eavisahelp)
- Additional liaisons are welcome to join the team
  - Contact Beth through EA Visa Help
  - [www.nafsa.org/eavisahelp](http://www.nafsa.org/eavisahelp)



# FBI Clearance

- Rules are established by the Attorney General
- Nearly 25 percent of requests for records are denied
  - Insufficient data: Missing information, illegible fingerprints, incorrect payment
- Fingerprints
  - Solicited from any police station or local law enforcement office
  - Specific times for fingerprinting
    - Contact the station beforehand
  - Students should ask for 2 to 3 sets of prints



# FBI Clearance

- Authentication
  - If the consulate requires the FBI record to be authenticated, the student's original application to the FBI should indicate that it must be authenticated by the DOS
  - The document must be forwarded to the Office of Authentications at the DOS to obtain an Apostille stamp

# FBI Clearance

- Processing Time
  - Efforts have been made at the FBI to reduce processing times
  - Had been as long as 10 weeks
  - Students with strict time limits who wish to expedite the DOS authentication process are encouraged to work with a visa processing service
    - Can guarantee 24-hour processing in some cases
- Additional Information
  - FBI: <http://www.fbi.gov/about-us/cjis/background-checks/faqs>
  - Submit requests to EA Visa Help



# International Student Visas

- International student visas may require a very different process than U.S. citizen visas
  - Each student has unique circumstances
  - Need to be addressed on a case-by-case basis
- US student visa status must also be considered

# Visa Education

- 3 Questions to Consider
  1. What level of assistance do your students really need?
  2. What amount of time and resources does your office have to commit?
  3. What are the possible benefits and risks?

# Visa Education

- Ensure clarity
  - Consider your institutional context
  - Publish your office's visa policy
  - Student and staff confusion does not further our mission
  - Consider the possibility of using a visa processing agency for relevant countries to ensure accurate support



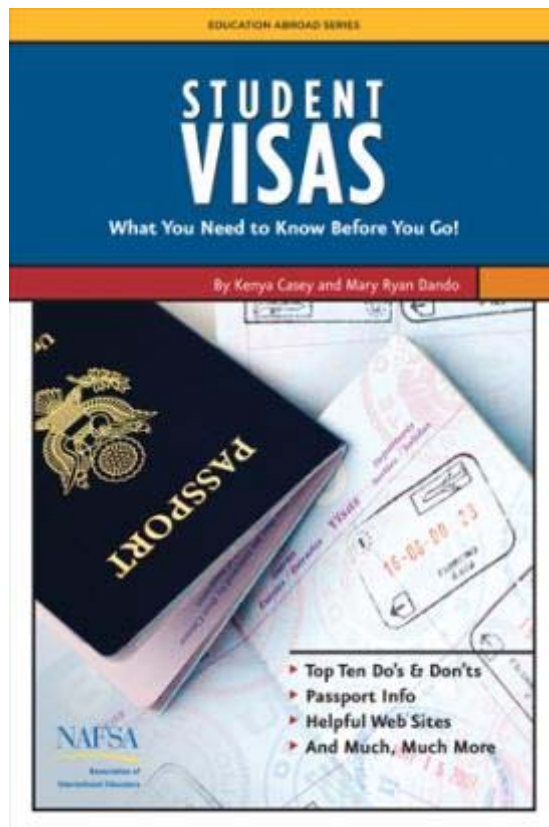


# NAFSA Help

- Committees
  - Regulatory Practice Committee
    - Consular Affairs Liaison Subcommittee
- Online
  - Visa Updates: [www.nafsa.org/eavisas](http://www.nafsa.org/eavisas)
  - Visa Assistance: [www.nafsa.org/eavisahelp](http://www.nafsa.org/eavisahelp)
    - Note: Register for a NAFSA ID and password
- Publication
  - *Student visas: What you need to know before you go*



# Publication



- *Student Visas*
  - Top 10 do's and don'ts
  - FAQs
  - Passport information
  - Helpful web sites
  - Glossary of visa terms
  - [Purchase online](#)

# Thank You

Get involved:

Receive visa updates - Make connections with your consulate - Help others in the field!

We are seeking volunteers (LA liaisons, Spain Country Coordinator)  
Contact us via [www.nafsa.org/eavisahelp](http://www.nafsa.org/eavisahelp).



*Houston Conference 2012*