

Innovative Ideas for Enhancing Study Abroad Student Services on a Reduced Budget

Rose Redington, Coordinator of Faculty Services
Kansas State University

Lindsey Brubaker, Study Abroad Advisor
Kansas State University

Nicole Hubbell, Study Abroad Program Coordinator
University of Denver

Presentation Overview

Study Abroad Program Philosophy

Advising Structure

Peer Advisor Support

Campus Collaboration

Technology



Group Discussion Questions:

1. What is your philosophy of student services in study abroad?
2. What makes your student advising successful?
3. How do you utilize student workers in your office?
4. What strategic campus partnerships does your office have and why?
5. How do you use technology to provide creative student services?



Study Abroad Program Philosophy

- Maximize Peer Advisor support
- Provide a focused program selection
- Emphasize student responsibility
- Provide adequate parent support
- Partner with Academic Advisors



Advising Structure – KSU

Walk-ins/Initial Student Advising
Confirmation of Acceptance (One-On-One) Meetings
Group Information Sessions



Advising Structure – DU

**Study Abroad 101
Sessions**
**Regional Advising
Sessions**
Orientation by Region



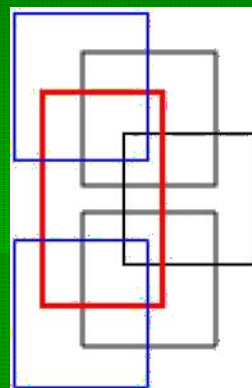
Peer Advisor: Philosophy - KSU

Welcoming, student-centered
environment
Improved office efficiency
Enhanced program development
& recruitment
Increased autonomy &
professional
development



Peer Advisor: Structure - KSU

Selection Process
Compensation
Training
Reporting Structure



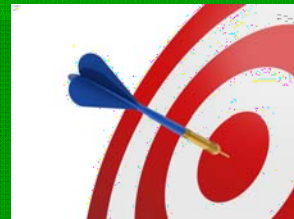
Peer Advisor: Responsibilities - KSU

Student Advising Assistance
Event Assistance and Representation
Administrative Duties
Research Projects
Focus Areas
Study Abroad Mentors
(SAM)



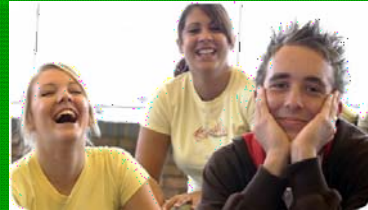
Peer Advisor: Focus Areas - KSU

Incoming Exchange Students & Exchange
Program Support
Events & Returning Student Services
Website and Office Publication Updates
Faculty-Led Programs and Insurance
Assistance
Targeted Outreach
Application Processing and
Administrative Support



Peer Advisor: Study Abroad Mentors (SAM)

- Official student organization
- Offers re-entry programming for returning students
- Provides student support
- Assists with events
- Allows for funding eligibility



Peer Advisors at DU

- Information sessions
- Walk-in advising hours
- Evening activities
- Monitor general email address
- Initial application processing
- Peers train each other



Campus Partnerships - KSU

Student Collaboration

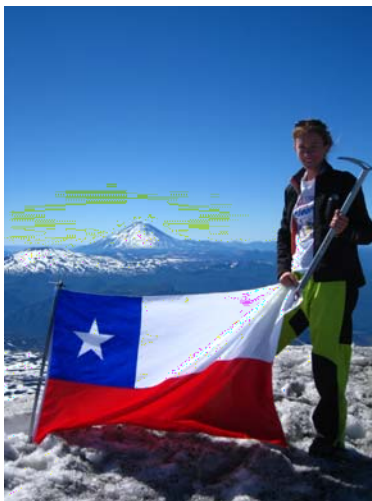
Scholarship Students
Returning Students
Incoming Exchange Students



Campus Collaboration

Admissions Office
Student Financial Assistance
Career and Employment Services
Academic Departments

Campus Partnerships - DU



**University Technology
Services (UTS)**

Faculty

Office of the Registrar

Student Life

**Center for
Multicultural
Excellence**

Technology: Recruiting

Social Networking



Student of the Month

Study Abroad Program Newsletter

Department and Student Listservs

User-Friendly Website

Technology: Communicating with Students

Strategic Email Contact

K-State Online

Web-Based Evaluations (Axio)

Website Resources



Technology @ DU

Re-designed website

Facebook

Blogs

Banner



Future Ideas

Increasing outreach to high school students

Building partnerships with campus student organizations

Freshman

Multicultural

Non-Traditional

International

Graduate Students

Honors

Greek

Athletics



Future Ideas

Study Abroad Program Internship
Country of the Month Spotlight
Online Program Cost
Comparison Sheets
K-State Online
Social Networking
You-Tube Videos
AudioBoo
Second Life



Future Ideas - DU

Online orientation section
Blackboard – Discussion Groups



Conclusion

Comments or Questions?

Electronic Resources Available

Contact Information

Lindsey Brubaker

lmbru@ksu.edu

Rose Redington

rosered@ksu.edu

Nicole Hubbell

nicole.hubbel@du.edu

