



Region II

# NAFSA

## 2013 Conference

October 22-25, 2013 ~ Bozeman, Montana

Life is  
DoWntowN

BOZEMAN



Arizona

Colorado

Kansas


Montana

Nebraska

New Mexico

Utah

Wyoming



For more information visit: <http://www.NAFSA.org/regionII>





**The World of International Education  
Will Meet in San Diego, May 25-30, 2014**

## **Be There for Endless Possibilities!**

One week, one location, and the one event you can't afford to miss:

- Connect and engage with peers
- Discover innovations and solutions
- Explore partnership opportunities
- Be inspired and challenged by thought leaders
- And so much more...

But you have to be there to experience it.



**PLAN NOW AND SET SAIL FOR SAN DIEGO!**  
**Learn more at [www.nafsa.org/sandiego3](http://www.nafsa.org/sandiego3)**

**NAFSA**  
Association of  
International Educators



## **NAFSA 2014 ANNUAL CONFERENCE & EXPO**

**Pathways to  
Global Competence**

May 25-30, 2014  
San Diego, CA, USA  
San Diego Convention Center



## Table of Contents

|                                 |       |
|---------------------------------|-------|
| Awards Luncheon .....           | 10    |
| Conference at a Glance .....    | 4-5   |
| Conference Evaluations .....    | 6     |
| Conference Info .....           | 6     |
| Conference Rooms.....           | 6     |
| Exhibit Hours .....             | 6     |
| Exhibitor List .....            | 24    |
| Hotel Info .....                | 6     |
| Hotel Map .....                 | 7     |
| Members .....                   | 8     |
| NAFSA Membership .....          | 6     |
| Name Badges .....               | 6     |
| Note Page .....                 | 26    |
| Opening Reception.....          | 10    |
| Business Meeting/Breakfast..... | 11    |
| Registration Hours .....        | 6     |
| Sessions – Oct 23 .....         | 13-18 |
| Sessions – Oct 24 .....         | 19-23 |
| Special Events.....             | 10-11 |
| State Breakfast .....           | 10    |
| Thank You .....                 | 9     |
| Workshops .....                 | 12    |

Dear Colleagues,

On behalf of the Region II leadership team, welcome to Bozeman, Montana and the 2013 NAFSA Region II Conference!

Montana's "Big Sky Country" is the perfect setting for our regional conference. Recently, the Montana Office of Tourism launched the "Get Lost (in Montana)" campaign. Aimed at residents of the state as well as those who visit from near and far, the campaign centers on motivating individuals to step out of their comfort zones, go to places they have never been before, have new experiences, and learn more about the world, their home and the environment in the process. "Getting Lost" – interpreted either literally or figuratively - speaks to a state of mind brought on through exploration of the backroad beauty of this great state.

As international educators, we play a key role in encouraging our students to broaden their horizons, embrace new experiences, and challenge their understanding of their host countries and their home cultures through educational exchange. We ask our students to be adventurers, to approach their travels with eagerness and an appreciation for the other, and to seek opportunities to learn, grow, and lead.

The 2013 NAFSA Region II conference in Bozeman also offers us an opportunity to venture away from our busy offices and explore the "backroads" of our profession, to deepen our understanding of the principal issues affecting our work and our constituents, to connect with colleagues and strengthen our partnerships, to innovate, create and explore new paradigms, and to learn more about ourselves and our field in the process. I hope this conference is enjoyable and rewarding for all of you, both professionally and personally. I encourage you to be adventurous and explore the many opportunities the conference has to offer. Seize the moment. Get lost (in Montana).

Many people have been instrumental in making this conference a success. Our Local Arrangements Chair, Nathalie Caillaud, has worked tirelessly to develop welcoming and efficient on-site operations staffed by volunteers eager to share their city and its surroundings with conference goers. The palette of Special Events she has developed provides a great introduction to Bozeman and offers unique opportunities to take in the natural beauty of Montana in the company of colleagues and friends. The Region II leadership team as well as the regional knowledge community liaisons worked hard to ensure that conference sessions and professional training opportunities meet the needs of attendees through their diversity of content, presenters, and intended audiences. Finally, a very special thank you to Cathy Lee Arcuino, the 2013 Region II Conference Planner. Her dedication, organization and attention to detail are enviable - the success of this conference is due in large part to her many early mornings, late nights, and lost Saturdays! Thank you!

Angela Perryman  
Chair, NAFSA Region II





# Conference — At-a-Glance

## Monday, October 21

(Best Western - BW & Holiday Inn - HI)

|                 |                                                     |             |
|-----------------|-----------------------------------------------------|-------------|
| 8:00am - 5:00pm | <b>Fundamentals of Intercultural Communication</b>  | Clark, BW   |
| 1:00pm - 5:30pm | <b>Workshop: F-1 Student Advising for Beginners</b> | Lewis, BW   |
| 1:00pm - 5:30pm | <b>Workshop: F-1 Student Advising: Intermediate</b> | Madison, BW |

## Tuesday, October 22

|                  |                                                     |             |
|------------------|-----------------------------------------------------|-------------|
| 8:00am - 12:30pm | <b>Workshop: F-1 Student Advising for Beginners</b> | Lewis, BW   |
| 8:00am - 12:30pm | <b>Workshop: F-1 Student Advising: Intermediate</b> | Madison, BW |
| 5:00pm - 6:00pm  | <b>Newcomers' Session</b>                           | Hyalite, BW |
| 6:00pm - 8:00pm  | <b>Opening Reception</b>                            | Atrium, BW  |

## Wednesday, October 23

|                   |                                                                                                         |                                       |
|-------------------|---------------------------------------------------------------------------------------------------------|---------------------------------------|
| 7:00am — 8:00am   | <b>Morning Hike to Peet's Hill</b>                                                                      | Lobby Best Western                    |
| 9:00am — 10:15am  | <b>Concurrent Sessions</b>                                                                              |                                       |
|                   | • Go Teacher: Lessons Learned In Inbound Programming                                                    | Lewis, BW                             |
|                   | • Strategic Recruitment in India                                                                        | Clark, BW                             |
|                   | • Utilizing Video for Study Abroad                                                                      | Madison, BW                           |
|                   | • American Citizens Services Abroad: Resources from the U.S. State Department                           | State, HI                             |
|                   | • Hot Topics with USCIS                                                                                 | Hyalite, BW                           |
|                   | • EducationUSA: Global Student Mobility Trends Go Local                                                 | University, HI                        |
| 10:15am — 10:45am | <b>Coffee Break</b>                                                                                     | Atrium, BW                            |
| 10:45am — Noon    | <b>Concurrent Sessions</b>                                                                              |                                       |
|                   | • Maximizing Mutual Benefits in a Uni-directional Partnership                                           | Lewis, BW                             |
|                   | • Proven Approaches to Handholding When Advising First-Generation Study Abroad Students                 | University, HI                        |
|                   | • Customized International Internships: Best Practices                                                  | State, HI                             |
|                   | • Regulatory Round Tables                                                                               | Hyalite, BW                           |
|                   | • Best Practices for Working with Recruitment Agents                                                    | Madison, BW                           |
|                   | • The Application of the Service-Learning Model in the IEP Setting: Culture, Conversation and Community | Clark, BW                             |
| Noon — 1:45pm     | <b>Awards Luncheon</b>                                                                                  | Gallatin/Jefferson Rooms, Holiday Inn |
| 2:00pm — 3:15pm   | <b>Concurrent Sessions</b>                                                                              |                                       |
|                   | • Time Management & Social Media: Solutions for International Educators                                 | Madison, BW                           |
|                   | • Curriculum Integration Made Simple: Develop Your Action Plan                                          | State, HI                             |
|                   | • Exploring the Impact of Service-Learning During Short-term Study Abroad                               | Lewis, BW                             |
|                   | • A Conversation with CBP/HSI                                                                           | Hyalite, BW                           |
|                   | • How to Move From Innkeeper to Gatekeeper: Building Brand In the People's Republic of China            | University, HI                        |
|                   | • How to Enhance English Language Immersion                                                             | Clark, BW                             |
| 3:15pm — 3:45pm   | <b>Coffee Break</b>                                                                                     | Atrium, BW                            |
| 3:45pm — 5:00pm   | <b>Concurrent Sessions</b>                                                                              |                                       |
|                   | • Book Discussion: "The Boy Who Harnessed the Wind"                                                     | University, HI                        |
|                   | • Managing Your Personal Finances as an International Educator                                          | State, HI                             |
|                   | • "From Good to Great": Best Practices for University - Provider Relations                              | Clark, BW                             |
|                   | • Study Abroad Alumni Programming: An Exploration of Diverse Applications                               | Hyalite, BW                           |
|                   | • Doing the Two-Step: How Community Colleges and Universities Partner for Success!                      | Lewis, BW                             |
|                   | • Advanced Issues in H-1B Processing                                                                    | Madison, BW                           |
| 5:15pm onwards    | <b>Emerson Center Art Galleries and Restaurant Hops</b>                                                 | Lobby of Best Western                 |



# Conference — At-a-Glance

## Thursday, October 24

|                   |                                                                                                                             |                              |
|-------------------|-----------------------------------------------------------------------------------------------------------------------------|------------------------------|
| 7:00am – 8:00am   | <b>Morning Yoga</b>                                                                                                         | Holiday Inn in the Pool Area |
| 8:00am — 9:00am   | <b>State Breakfast</b>                                                                                                      | Gallatin/Jefferson Rooms, HI |
| 9:00am — 10:15am  | <b>Concurrent Sessions</b>                                                                                                  |                              |
|                   | • Fulbright International Education Administrators Seminars                                                                 | University, HI               |
|                   | • Implementing a Global Engagement Framework in a Rural, Two-Year Institution                                               | Clark, BW                    |
|                   | • Financing Education Abroad – Current Issues and Best Practices                                                            | Madison, BW                  |
|                   | • Faculty-led International Programs (FLiP) at NMSU: Challenges, Successes and Lessons Learned                              | Lewis, BW                    |
|                   | • Developing a Strategic International Enrollment Management Plan                                                           | Hyalite, BW                  |
|                   | • Comprehensive Immigration Reform: Where are We and Where are We Going?                                                    | State, HI                    |
|                   | • The Intersection of Academics and Immigration: Making Progress Towards a Degree                                           | Montana, HI                  |
| 10:15am — 10:45am | <b>Coffee Break</b>                                                                                                         | Atrium, BW                   |
| 10:45am — Noon    | <b>Concurrent Sessions</b>                                                                                                  |                              |
|                   | • Ramping Up Your State International Educators Association                                                                 | Lewis, BW                    |
|                   | • Serve International Education through NAFSA Leadership                                                                    | Clark, BW                    |
|                   | • Off the Beaten Path: Enhancing Cultural Immersion in Faculty-Led Programs                                                 | Montana, HI                  |
|                   | • Adding an Online Component to Study Abroad Pre-departure Orientation                                                      | State, HI                    |
|                   | • Study Abroad for All: Engaging Underrepresented Students in Education Abroad (EA)                                         | University, HI               |
|                   | • Aiming for Success, Not Just Status: Helping International Students Effectively Navigate the U.S. Higher Education System | Madison, BW                  |
|                   | • Keeping International Students Healthy in the U.S.                                                                        | Hyalite, BW                  |
| Noon — 2:00pm     | <b>Networking &amp; Lunch On-Your-Own (transportation needed)</b>                                                           |                              |
| 2:15pm — 3:30pm   | <b>Concurrent Sessions</b>                                                                                                  |                              |
|                   | • No Two Are Alike: Recognizing Your Leadership Qualities                                                                   | Hyalite, BW                  |
|                   | • Speaking Their Language: Communicating Effectively With Faculty to Develop Meaningful Short-Term Programs                 | State, HI                    |
|                   | • Understanding What Makes Students Tick: Motivations and Barriers for Today's Students Looking to Study Abroad             | University, HI               |
|                   | • Integrating Study Abroad into Innovative Language Curriculum                                                              | Clark, BW                    |
|                   | • The Education System of China                                                                                             | Madison, BW                  |
|                   | • DREAMzone: An Undocumented Student Ally Development Training Program                                                      | Montana, HI                  |
|                   | • Self-Evaluation for the Exchange Visitor Program                                                                          | Lewis, BW                    |
| 3:30pm-3:45pm     | <b>Coffee Break</b>                                                                                                         | Atrium, BW                   |
| 3:45pm-5:00pm     | <b>Concurrent Sessions</b>                                                                                                  |                              |
|                   | • Film: William and the Windmill                                                                                            | Hyalite, BW                  |
|                   | • Optimizing the Reentry Process                                                                                            | Madison, BW                  |
|                   | • Getting Past "Everyone Speaks English." Language Learning and Global Competence                                           | State, HI                    |
|                   | • Study Abroad Service Learning Across Disciplines                                                                          | University, HI               |
|                   | • Updates to the Educational System of Turkey                                                                               | Lewis, BW                    |
|                   | • International Student Athletes: On your mark, get set, go?!                                                               | Clark, BW                    |
|                   | • Shaking the Money Tree: Making the Most of Financial Resources for International Students                                 | Montana, HI                  |
| 6:00pm-9:00pm     | <b>Museum of the Rockies Dinosaur Exhibit and Dinner</b>                                                                    | Lobby of Best Western        |

## Friday, October 25

|                 |                                             |                                       |
|-----------------|---------------------------------------------|---------------------------------------|
| 7:30am — 8:45am | <b>Region II Business Meeting/Breakfast</b> | Jefferson/Gallatin Rooms, Holiday Inn |
| 9:00am — 7:00pm | <b>Yellowstone National Park Tour</b>       | Lobby of Best Western                 |

# General Conference Information

## ***Registration Hours***

October 22 ..... Noon - 5:00pm  
October 23 ..... 10:00am – 5:00pm  
October 24 ..... 8:00am – 2:00pm

## ***Exhibit Hours***

October 23 ..... 8:00am – 5:00pm  
October 24 ..... 8:00am – 5:00pm

## ***Conference Room Names***

Sessions and Workshops will be held in the following rooms at the Best Western (BW) and the Holiday Inn (HI): Lewis, BW; Clark, BW; Madison, BW; Hyalite, BW; State, HI; Montana, HI; and University, HI.

## ***Name Badges***

For security reasons, conference participants are required to wear name badges for admission to all workshops, sessions and events. Individuals without name badges may not be admitted. Name badges are provided at the registration table.

## ***Session and Conference Evaluations***

At the end of every session, please take a moment to complete the session evaluation form. Session evaluations are reviewed by the regional team who then select three nominations to submit to NAFSA. The NAFSA Annual Conference Committee then selects regional sessions that provide visibility for strong offerings from a regional conference to round out and complement the annual conference.

## ***NAFSA Memberships***

With nearly 10,000 members, NAFSA is the world's largest non-profit professional association dedicated to international education. During the Region II Conference, first time members can save 50% off membership rates and pay only \$220. For more membership information, please visit the registration booth during registration hours.

## ***Hotel Information***

### ***Holiday Inn***

is located at:  
5 E Baxter Ln,  
Bozeman, MT USA 59715  
Tel: +1-406-587-4561



### ***Hotel Amenities***

- Indoor Pool and Jacuzzi
- Health and Fitness Center
- On-site Restaurant, 3 Rivers
- 24 hour Business center Free Wireless Internet
- Business Center, with copying and courier service.
- Laundry/dry cleaning
- Room Service

### ***3 Rivers Restaurant and Dry Fly Saloon Lounge***

3 Rivers, serves mouth-watering Montana cuisine and the Dry Fly Saloon offers daily food and drink specials.

### ***Transportation***

The Holiday Inn Bozeman offers complimentary shuttle service from the Yellowstone International Airport. Please see Guest Relations for any shuttle requests.

### ***Best Western Grantree Inn***

is located at:  
1325 N 7th Ave  
Bozeman, MT 59715  
Tel: +1-406-587-5261



### ***Hotel Amenities***

- Indoor Pool and Hot Tub
- Fitness Center
- On-site Restaurant Club Tavern and Grill
- 24 hour Business center Free Wireless Internet
- Business Center, printing available
- Laundry/dry cleaning.
- Room Service

### ***Club Tavern and Grill***

Cocktail lounge open daily 6:00 a.m. - 2:00 a.m.; full menu until 10:00 p.m.; late night menu Thursday, Friday, Saturday serving pizza, Angus steaks and seafood

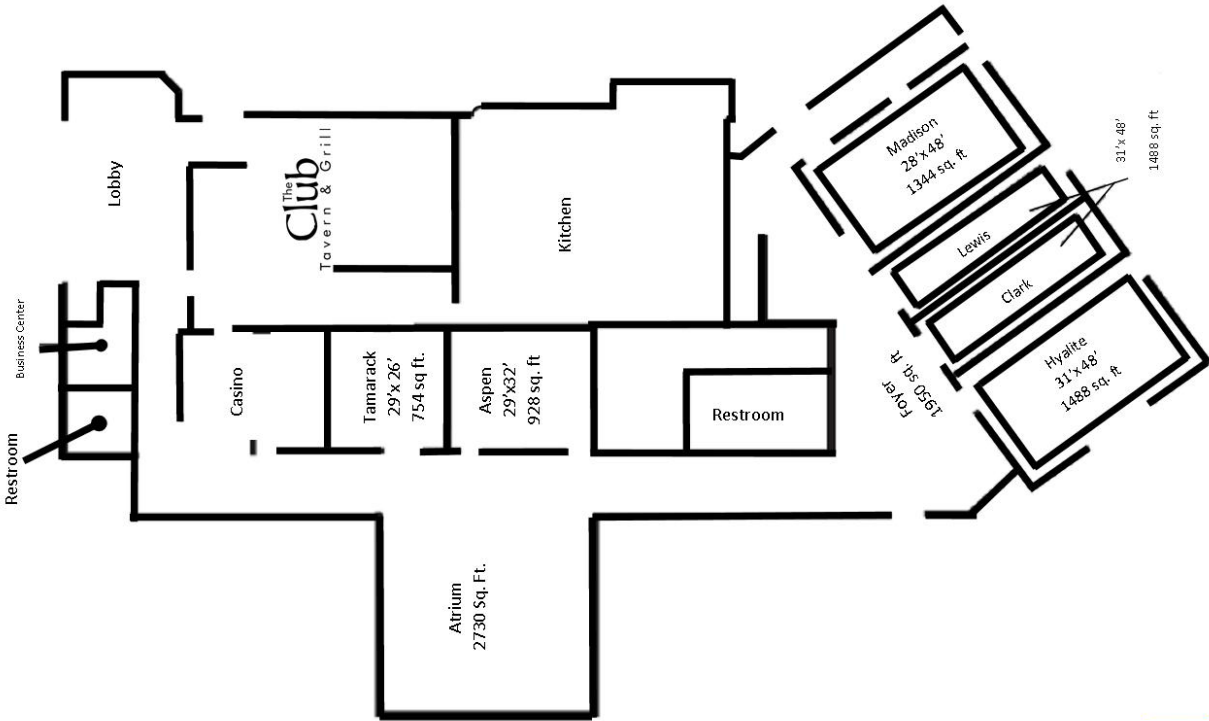
### ***Transportation***

The Best Western Grantree Inn offers complimentary 24 hour shuttle service from the Yellowstone International Airport.



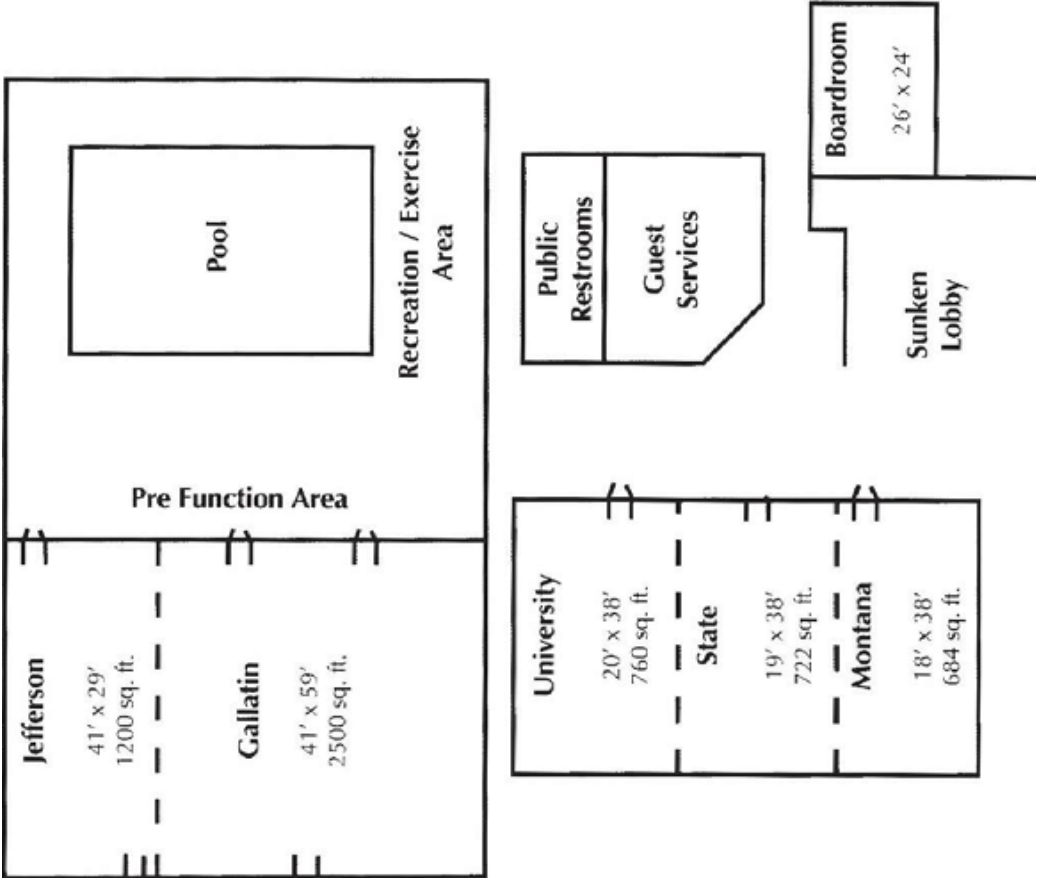
Best Western Grantree Inn

MEETING ROOM FLOOR PLANS



Holiday Inn

MEETING ROOM FLOOR PLANS



## Region II Team Members

---

### ***Chair***

Angela Perryman (12/2013)  
University of Kansas  
785.864.3742  
aperryman@ku.edu

### ***Chair Elect***

Mark Hallett (12/2013)  
Colorado State University  
970.491.7894  
mark.hallett@colostate.edu

### ***Past Chair***

Aaron Rose (12/2013)  
Brigham Young University  
801.422.8241  
aaron\_rose@byu.edu

### ***Treasurer***

Mandy Hansen (12/2014)  
Northern Arizona University  
928-523-8009  
mandy.hansen@nau.edu

### ***Conference Planner***

Cathy Lee Arcuino (12/2013)  
Pittsburg State University  
620.235.4681  
carcuino@pittstate.edu

### ***Ombudsperson***

Cynthia Scarpa (12/2014)  
Colorado State University  
970.491.5917  
cynthia.Scarpa@colostate.edu

### ***Ombudsperson***

Amber Tetreau-Segura (12/2013)  
University of Arizona  
520.621.2698  
amts@email.arizona.edu

### ***Web/Communications Tech Rep***

Ron Vick, Sr (12/2013)  
Wayne State College  
402.375.7321  
rovick1@wsc.edu

### ***Community College Rep***

Linda Yazdani (12/2014)  
Red Rocks Community College  
303.914.6536  
linda.yazdani@rrcc.edu

### ***IEM KC Rep***

Gonzalo Bruce (12/2013)  
Emporia State University  
620.341.5374  
gb Bruce@emporia.edu

### ***EA KC Rep***

Julia Helminiak (12/2014)  
Colorado State University  
970.491.3817  
julia.helminiak@colostate.edu

### ***ISSS KC Rep***

Marlene Arnold (12/2013)  
University of Denver  
303.871.4911  
marlene.arnold@du.edu

### ***Arizona Rep***

Catherine A. Ribic (12/2013)  
Northern Arizona University  
928.523.4199  
catherine.ribic@nau.edu

### ***Colorado Rep***

Chris Churma (12/2014)  
Colorado State University  
970.491.8750  
chris.churma@colostate.edu

### ***Kansas Rep***

Stacey Bailey (12/2014)  
Kansas State University  
785.532.6448  
sbails@k-state.edu

### ***Montana Rep***

Fred Sullivan (12/2014)  
Montana Tech of the Univ. of Montana  
406.496.4304  
fsullivan@mtech.edu

### ***Nebraska Rep***

Jan Willems (12/2014)  
Doane College  
402.826.8215  
jan.willems@doane.edu

### ***New Mexico Rep***

John Rodriguez (12/2014)  
Santa Fe University of Art and Design  
505.473.6659  
john.rodriguez@santafeuniversity.edu

### ***Utah Rep***

Anjali Pai Hallett (12/2013)  
University of Utah  
801.581.6511  
anjali.hallett@kaplan.com

### ***Wyoming Rep***

Shawn Bunning (12/2013)  
University of Wyoming  
307.766.3019  
shawnb@uwyo.edu



# Thank You!

To the following individuals for their invaluable contributions to making this conference a success!

## Conference Planner

Cathy Lee Arcuino – Pittsburg State University

## Evaluations

Nathalie Caillaud – Montana State University

## Exhibits and Sponsorships

Adam Breen – Terra Dotta

Mark Hough – HTH Worldwide

## Local Arrangements Chair

Nathalie Caillaud – Montana State University

## Publications/Conference Program

Heather Dolan – Montana State University

Nathalie Caillaud – Montana State University

## Registration

Deborah Chiolero - Montana State University

## Special Events

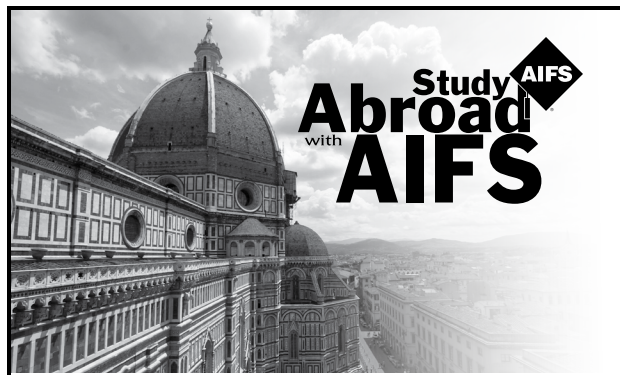
Nathalie Caillaud – Montana State University

## Webmaster

Ron Vick – Wayne State College

## Workshops

Cathy Ribic – Northern Arizona University



**Study AIFS**  
**Abroad**  
with  
**AIFS**

**COLLEGE STUDY ABROAD**  
Comprehensive Semester, Summer, January Term  
and Academic Year Programs  
[www.aifsabroad.com](http://www.aifsabroad.com)

**CUSTOMIZED PROGRAMS**  
Custom Designed, Faculty-led Study Abroad  
[www.aifspartnerships.com](http://www.aifspartnerships.com)

**CONTACT US TODAY (800) 727-2437**

## EXPERT FOREIGN CREDENTIAL EVALUATORS

### GO PAPERLESS!

Secure  
Electronic  
Reporting

Check Report Status  
24 hours a-day Online



**ECE**

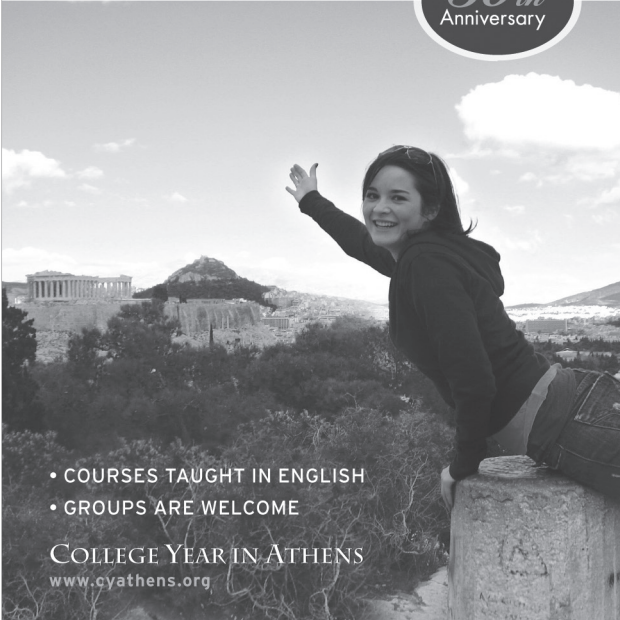
[www.ece.org](http://www.ece.org)

EDUCATIONAL  
CREDENTIAL  
EVALUATORS

P.O. Box 514070 USA  
Milwaukee WI 53203  
TEL: 414.289.3400  
FAX: 414.289.3411

**CYA**  
**STUDY IN GREECE**  
SEMESTER • YEAR • SUMMER

**50th Anniversary**



- COURSES TAUGHT IN ENGLISH
- GROUPS ARE WELCOME

COLLEGE YEAR IN ATHENS  
[www.cyathens.org](http://www.cyathens.org)

# Special Events

## Opening Reception

**Oct 22 • 6:00pm-8:00pm • Atrium, BW**

Kick off the official start to the conference by enjoying wonderful hors d'oeuvres and convivial conversation with your colleagues. Entertainment provided by the Bebe LeBoeuf Cajun band. *Pre-registration was required.*

## Morning Hike to Peet's Hill

**Oct 23 • 7:00am-8:00am • Lobby, BW • Free**

Get up and get moving with a morning hike up Peet's Hill. The Peet's Hill hike provides great views of the city of Bozeman and the surroundings. A choice between two routes can accommodate hikers of all abilities. Total distance is 2.0 miles.

## State Bags Silent Auction

**Oct 23 & 24 • 8:00am-5:00pm  
Aspen Room, BW**

Come and outbid everyone for the bag that has been catching your eye in our Silent Auction. All proceeds benefit the region and are used to support travel grants, state activity grants, and other important Region II offerings. It's great stuff and the funds support a great cause!

## Awards Luncheon

**Oct 23 • Noon-1:45pm  
Gallatin/Jefferson Rooms, HI**

A networking lunch with your colleagues to celebrate the success of Region II members. *Pre-registration was required.*

## Emerson Center Art Galleries and Restaurant Hops

**Oct 23 • 5:15pm-8:30pm • Lobby  
\$5 transportation**

The Emerson Center for the Arts and Culture is a community arts hub housed in a one-of-a-kind 1918 school building. Classrooms are now artist workspace, yoga studios, galleries, non-profit organizations and the award-winning Emerson Grill. The Emerson offers arts outreach and education programs, community events, and contemporary art galleries showcasing the work of established and emerging artists. Galleries and artists shops will remain open into the early evening for NAFSAns. Visit the galleries, then head downtown for a bite to eat at one of Bozeman's many unique restaurants.

## Morning Yoga

**Oct 24 • 7:00am-8:00am • Pool Area, HI  
Free**

Ready to stretch those sore muscles? Join us for a 45 minute flow yoga course. Appropriate for all fitness levels.

## State Breakfast

**Oct 24 • 8:00am-9:00am  
Gallatin/Jefferson Rooms, HI**

Learn important information, news and announcements concerning your state and the region while you network with friends and enjoy a hearty buffet breakfast. *Pre-registration was required.*

**BREAK FREE**  
**Save Paper, Time, and Money**

**WITH TERRA DOTTA SOFTWARE, YOU CAN:**

- ✓ Locate anyone, anywhere, anytime
- ✓ Replace clerical with face time
- ✓ Centralize data storage and reporting
- ✓ Mitigate risk proactively
- ✓ Integrate seamlessly with your current systems
- ✓ Eliminate redundant data entry

Learn more at: [TerraDotta.com](http://TerraDotta.com)

Making a Difference in  
Higher Education Software

**TERRA DOTTA**



# Special Events

## ***Museum of the Rockies Dinosaur Exhibit and Dinner***

**Oct 24 • 6:00pm-9:00pm • Lobby, BW  
\$30**

Dinosaurs, dinosaurs, dinosaurs! The Museum of the Rockies (MOR) is a world-class museum located in the heart of the Rocky Mountains in Bozeman, Montana. Known for its vast collection of dinosaur fossils, the Museum houses some of the most famous dinosaur specimens in the world including Tyrannosaurus Rex and Triceratops. Explore this one-of-a-kind exhibit, ask questions of the docents, and network with your colleagues in a unique setting. Dinner is included.

## ***Region II Business Meeting/ Breakfast***

**Oct 25 • 7:30am-9:00am  
Gallatin/Jefferson Rooms, HI**

Breakfast will be served from 7:30am-8:00am, followed by the business meeting. Everyone is welcome and encouraged to attend. Region II updates, finances, and other business will be discussed. *Pre-registration was required.*

## ***Yellowstone National Park Tour***

**Oct 25 • 9:00am-7:00pm • Lobby, BW  
\$65**

Get ready for grizzly bears and eagles. Geysers and mud pots. Forests and lakes. Historic cabins and prehistoric sites. Yellowstone offers countless opportunities for discovery! This one-day tour includes visits to the Grand Canyon of Yellowstone, Old Faithful and Grand Prismatic. Transportation, park entrance and lunch is included. Bring your walking shoes, camera, and sense of adventure! *Pre-registration was required.*

**CAPA**  
INTERNATIONAL EDUCATION

CAPA's Global Cities and faculty-led programs are designed to create a study abroad experience that is personalized to meet each student's individual and academic goals through engaging coursework and site-specific cultural experiences. Contact your CAPA Institutional Relations Manager to find out why CAPA has been the trusted global leader in education abroad for over 40 years.

800-793-0334 | [www.capa.org](http://www.capa.org)

Beijing | Buenos Aires | Dublin | Florence | Istanbul | London | Shanghai | Sydney

# Workshops

## ***Fundamentals of Intercultural Communication***

---

**Oct 21 • 8:00pm–5:00pm**  
**Clark, BW**

International educators engage in intercultural communication every working day and become skilled in dealing with differences that exist among their clients and colleagues. This workshop is designed to provide a conceptual framework for those interactions, to increase familiarity with the terms of intercultural communication, and to broaden the understanding of how culture influences behavior. In addition, how individuals grow in intercultural sensitivity and what kinds of response can turn critical interactions into educational opportunities at various levels of sensitivities will be explored. Brief lectures, exercises, and other interactive techniques will be used.

### **Workshop Objectives**

*Participants will be able to:*

- Identify and describe the five characteristics of culture
- Describe the Iceberg Model
- Describe how culture serves as a filter
- Describe the difference between cultural stereotype and cultural generalization
- Describe the Development Model for Intercultural Sensitivity
- Describe the elements of nonverbal communication
- Identify the characteristics of the individualistic and collectivistic cultures
- Describe the D.I.E. Model

## ***F-1 Advising for Beginners***

---

**Oct 21 • 1:00pm-5:30pm and**  
**Oct 22 • 8:00am-12:30pm • Lewis, BW**

This introductory workshop provides participants with hands-on opportunities to learn how to handle the most common requests made of new Designated School Officials (DSO). Participants will develop skills to help them interpret the common requests F-1 students have during the course of their program, research the regulations and other resources that help inform and define the work of the DSO, and determine the best course of action in each case. The workshop will apply these skills to requests such as issuing I-20s, maintaining status, employment, practical training, travel and reentry, and program extensions.

### **Workshop Objectives**

- Interpret student requests and accurately advise them on how to maintain their F-1 status
- Make informed decisions using a process that will incorporate the myriad influences affecting the decision
- Comply with legal and institutional reporting requirements
- Educate key parties on important matters involving international students

## ***F-1 Advising: Intermediate***

---

**Oct 21 • 1:00pm-5:30pm and**  
**Oct 22 • 8:00am-12:30pm • Madison, BW**

This intermediate level workshop is designed for Designated School Officials who understand the processes of F-1 student advising and are ready to tackle some of the more complex, or “gray”, situations.

Participants will discuss a range of case studies on the topics of DSO Responsibilities, Maintenance of Status, Travel, Transfers, Employment, Change of Status, and Reinstatement. By addressing these case studies, participants will learn how to advise students when regulations and guidance do not give a clear answer to their situation.

### **Workshop Objectives**

- Be a self-sufficient adviser by knowing your resources
- Develop interpretations of F-1 regulations and guidance
- Interpret and develop institutional policy
- Learn techniques to advise F-1 students on situations where clear guidance is not available



# Sessions • Wednesday • October 23

## *Go Teacher: Lessons Learned In Inbound Programming (PAN-NAFSA)*

**Oct 23 • 9:00am–10:15am • Lewis, BW**

**Presenters:** *Sara McCormick, New Mexico State University; Mona Menking, Kansas State University; Socorro Herrera, Kansas State University*

The Go Teacher program at NMSU started in January 2013. The program is funded by the Ecuadorean Ministry of Higher Education, Science, Technology and Innovation (SENESCYT) to improve the English language proficiency of participants and to obtain certification to teach English as a second language. Kansas State University (K-State) is the lead Go Teacher institution. NMSU is one of three U.S. universities currently working with K-State to implement the Go Teacher program. Also participating are the University of Kentucky and Valparaiso University. At NMSU, the program is being coordinated by the new Center for English Language Programs (CELP) housed in the Office of International and Border Programs. The Go Teacher Program addresses many of the objectives of comprehensive internationalization at NMSU. This session will discuss the GO Teacher Program at both the NMSU and K-State campuses. Best practices and lessons learned will also be discussed.

## *American Citizens Services Abroad: Resources from the U.S. State Department (EA)*

**Oct 23 • 9:00am–10:15 • State, HI**

**Presenter:** *Karen Williams, NAFSA Education Abroad Regulatory Practice Committee*

Learn about the assistance the U.S. Department of State can provide to U.S. students, faculty, and administrators while traveling, studying, or living overseas. Services include assisting in welfare/whereabouts requests, medical emergencies, crisis response, passport assistance (including applying for a second passport when necessary), as well as routine inquiries. The presentation will also provide an overview of the Consular Information Program and on resources available through [www.travel.state.gov](http://www.travel.state.gov) and [www.studentsabroad.state.gov](http://www.studentsabroad.state.gov)

## *Strategic Recruitment in India: An Insight into Innovative Institutional Practices and Experience (IEM)*

**Oct 23 • 9:00am–10:15am • Clark, BW**

**Presenters:** *Swaraj Nandan, KIC UnivAssist*

With Indian students representing 13% of foreign students in USA, it is important for international recruiting plans to incorporate a clearly defined strategy for India. This session will share socioeconomic trends that make India attractive, provide insight into the application decision of the Indian student and share innovative recruiting practices and experiences of institutions in India.



## EMPOWERING YOUR INSTITUTION'S *International Recruitment*

Over 50 years of student recruitment expertise.

**Let us help you realize your international student recruitment goals.**

### 3 WAYS ELS CAN HELP YOU

- Join the ELS University Conditional Admission Network, 650 institutions on four continents that recognize the completion of ELS as proof of English proficiency
- Become a member of an ELS Recruitment Partnership Plan, with solutions customized to your needs
- ELS Direct Entry Pathway Center on your campus

**ELS.edu • UniversityGuideOnline.org  
InternationalStudentRecruitment.org**

© Copyright 2013 ELS Educational Services, Inc. – a Berlitz company.

### FOR MORE INFORMATION ABOUT...

- Hosting an ELS Language Center on your campus, contact: Ms. Julie Blevins • [jblevins@els.edu](mailto:jblevins@els.edu)
- Recruiting degree candidates from around the world, contact: Ms. Lisa Magliozzo • [lmagliozzo@els.edu](mailto:lmagliozzo@els.edu)

# Sessions • Wednesday • October 23

## *Utilizing Video for Study Abroad (EA)*

**Oct 23 • 9:00am–10:15am • Madison, BW**

**Presenters:** Gabe Schirm Sr, *GlobaLinks*; Annie Bierbower, *GoAbroad.com*

The objective of this session is to provide information and an interactive guide on how international educators and students can utilize video more effectively to promote study abroad. The first section will demonstrate ways in which we can help students more effectively capture and share their study abroad experiences through this dynamic medium. The second will show how to incorporate these videos into social media and other outlets in our international education marketing efforts.

## *Hot Topics with USCIS (ISSS)*

**Oct 23 • 9:00am–10:15 • Hyalite, BW**

**Presenters:** Cynthia Scarpa, *Regulatory Ombudsperson, Region II*; Amber Tetreau-Segura, *Regulatory Ombudsperson, Region II*

Come hear from USCIS representatives about current hot topics, correct application filing processes and other pertinent issues to international student advising.

## *EducationUSA: Global Student Mobility Trends Go Local (IEM)*

**Oct 23 • 9:00am–10:15am • University, HI**

**Presenters:** Kevin Barta, *U.S. Department of State*; Mark Hallett, *Colorado State University*

The U.S. Department of State's Bureau of Educational and Cultural Affairs has a mission to increase mutual understanding between the people of the United States and the people of other countries by means of educational and cultural exchange. This session focuses on international student mobility trends and targeted recruitment with an EducationUSA program officer and how that translates into specific recruitment strategies with a university representative from your region. A returned Gilman Scholar will share experiences of representing his/her institution abroad to round out the picture.

## *Maximizing Mutual Benefits in a Uni-directional Partnership (PAN-NAFSA)*

**Oct 23 • 10:45am–Noon • Lewis, BW**

**Presenters:** Ali Thobhani, *Metropolitan State University of Denver*; Stu Monroe, *Metropolitan State University of Denver*; Peg Fraser, *Metropolitan State University of Denver*

There are certain international university partnerships in which the movement of personnel (faculty, students, staff) occurs only in one direction - from the USA. Reciprocal movements of personnel do not take place because one of the partner institutions lacks financial resources or it is challenging for personnel from that institution to receive US entry visas. In the absence of reciprocal exchanges of personnel, what are other activities that can be undertaken to make the partnership mutually beneficial? This session will present the experience of MSU Denver and its partner university in Ethiopia, Aksum University and Albania, University of Shkodra.

## *Regulatory Round Tables (ISSS)*

**Oct 23 • 10:45am–Noon • Hyalite, BW**

**Presenters:** Cynthia Scarpa, *Regulatory Ombudsperson, Region II*; Amber Tetreau-Segura, *Regulatory Ombudsperson, Region II*

The Regulatory Round Tables are an Annual Conference favorite, which we are bringing to the regional level. Come learn how your KCISS Rep and your Regulatory Ombuds liaisons can help you solve your immigration issues throughout the year and then stay as we host an immigration triage clinic, to assist you in solving your current international student 'regulatory headaches'.

A promotional graphic for 'cis abroad' featuring a dark background with a world map. On the left, a vertical list of countries is shown: Multi-Country, Argentina, Australia, China, Costa Rica, Czech Republic, Ecuador, England, France, Ghana, Hawaii, Ireland, Italy, Mexico, New Zealand, Peru, Scotland, South Africa, Spain, and Thailand. The central text reads 'cis abroad' in a stylized font, with 'You're Going Places.' below it. To the right, there are four small images: a person jumping, a traditional Chinese building, a group of people, and a cityscape. Text labels 'semester and year abroad', 'summer and january abroad', and 'intern abroad' are placed near these images. At the bottom right, it says '2013 ■ CISabroad.com'.

## Sessions • Wednesday • October 23

### ***Proven Approaches to Handholding When Advising First-Generation Study Abroad Students (EA)***

**Oct 23 • 10:45am–Noon • University, HI**

***Presenter: Jessica Greenbaum, University of Colorado at Denver; Gretchen Cook-Anderson, IES Abroad***

Not all students are the same, so why should our advising practices be? This session challenges the stigma of “handholding” and the one-size-fits-all model in advising students for study abroad. Our session will examine what makes first-generation college students differ uniquely from typical study abroad students. We will explore what “handholding” means in the context of student advising and will delve into various practical approaches and advising styles that have proven impact when working particularly with first-generation college students and their families.

### ***Best Practices for Working with Recruitment Agents (IEM)***

**Oct 23 • 10:45am–Noon • Madison, BW**

***Presenters: David Engberg, Global Opportunities Group, LLC; Elizabeth Blanchford, Global Opportunities Group, LLC***

While the use of agents to recruit international students is increasing at U.S. colleges and universities, many institutions have yet to develop procedures for identifying, working with, and evaluating agent relationships. This session will discuss the advantages and disadvantages of working with international recruitment agents, then offer practical advice for working with them. Discussion items will include: goal and policy setting; types of agent representation; contracts and compensation; student success tracking; relationship management; marketing dos and don'ts; staffing; quality control and accountability; and responding to critics.

### ***The Application of the Service-Learning Model in the IEP Setting: Culture, Conversation and Community (TLS)***

**Oct 23 • 10:45-Noon • Clark, BW**

***Presenters: Kristina Allison, A.C.E. Language Institute at Montana State University; Iris Driscoll, A.C.E. Language Institute at Montana State University***

Presenters will share their experience developing and carrying out the “Culture, Community, and Conversation” service-learning course for upper level English language students in IEP. The curriculum for this dynamic course engages students in active learning in the community using techniques and activities that deviate from the traditional IEP classroom setting. While continuing to develop the listening, speaking, reading, and writing skills appropriate to their level, students learn leadership skills, interact with the larger community and practice language in authentic settings. Students present a final portfolio and have the opportunity to earn a Certificate of Accomplishment. Participants in the session will receive selected course materials and gain insights into the theory, practice, and adaptations for offering a service-learning course to international students.

### ***Customized International Internships: Best Practices (EA)***

**Oct 23 • 10:45am–Noon • State, HI**

***Presenters: Julianna Kobs, Barcelona Study Abroad Experience (SAE); Danielle Varnes, Northern Arizona University***

International internships are becoming increasingly popular in our field and along with it; the demand for high quality international student interns in cities around the world is growing. This session outlines the best practices for coordinating international internship programs at home and abroad. Topics to be covered include student advising, working with campus departments, cultural integration, student and internship communication, and reentry services. The audience will have a chance to discuss existing practices and take home an internship resource toolkit.





# Sessions • Wednesday • October 23

## ***How to Enhance English Language Immersion (TLS)***

**Oct 23 • 2:00pm–3:15pm • Clark, BW**

**Presenters:** *Kadie Goodman, University of Colorado at Denver; Erika Wiggins, University of Colorado at Denver*

This session will detail several methods to enhance English language immersion in an IEP setting such as writable walls, peer conversation partners, and “green cards” (a system of positive motivation). The ESL Academy at CU Denver has had outstanding success with these methods. Having a majority of students with one common language presents the obvious problem of students speaking in their mother tongue between classes. These methods will demonstrate how to increase the time and amount students speak in English.

## ***Curriculum Integration Made Simple: Develop Your Action Plan (EA)***

**Oct 23 • 2:00pm–3:15pm • State, HI**

**Presenters:** *Cindy Kraft, University of Colorado at Boulder*  
Want to move forward with Curriculum Integration (C.I.) but not sure how to get started? Or, do you feel stuck with your C.I. efforts? This session breaks C.I. down into simple steps based on failures/successes experienced by the presenter and other institutions. You will also be asked to add ideas and will leave with a customized action plan for YOUR campus that ranges from small simple tasks to bigger picture projects. C.I. is do-able!

## ***A Conversation with Customs and Border Protection/Homeland Security Investigations (ISSS)***

**Oct 23 • 2:00pm–3:15pm • Hyalite, BW**

**Presenters:** *Cynthia Scarpa, Regulatory Ombudsperson, Region II; Amber Tetreau-Segura, Regulatory Ombudsperson, Region II*

This session will connect Customs and Border Protection (CBP) and/ or Homeland Security Investigations (HSI) Officers with ISSS staff to better understand the processes of each unit.

## ***Time Management & Social Media: Solutions for International Educators (PAN-NAFSA)***

**Oct 23 • 2:00pm–3:15pm • Madison, BW**

**Presenters:** *Tiffany Harrison, GoAbroad.com; Stephanie Jackson, BridgeAbroad; Melissa Cech, University of Colorado at Boulder*

Who has time for social media? As the number of platforms and users increase, social media marketing continues to become as essential as traditional marketing strategies in international education - meaning that educators must make time for it. This session will focus on some of the major social platforms with tips on time management, collecting content, and how to effectively manage and sustain successful online communities. Presenters will use their own professional experiences as a reference, and also point to best practices across the field.

## ***Exploring the Impact of Service-Learning During Short-Term Study-Abroad (EA)***

**Oct 23 • 2:00pm–3:15pm • Lewis, BW**

**Presenters:** *Carl Jaramillo, Minds Abroad; Yao Zhang, Columbia University*

This study seeks to explore how service-learning during short-term study-abroad programs can impact students' civic values. During the past decade, more and more institutions and organizations are developing international service-learning programs during study-abroad. However little is known about the impact of service-learning during short-term study-abroad programs. Thus, this study will use mixed methods to research how students are changing in civic values (such as public service motivations and social values) during the service learning component of their study abroad program. We will conduct surveys before and after the service-learning programs to assess whether students' values have changed, and to explore how they changed; we will also conduct interviews with students to get more in-depth information about the change process.



AACRAO International Education Services (IES) provides credential evaluations to over 1,500 institutions with evaluators averaging 22 years of experience. We also provide training and resources for those performing evaluations internally. AACRAO IES is the owner and content creator of the Electronic Database for Global Education (EDGE), the measure by which Immigration and Naturalization Service (INS) judges evaluations submitted with applications for naturalization. Please visit [ies.aacrao.org](http://ies.aacrao.org) for more information.

## Sessions • Wednesday • October 23

### *How to Move From Innkeeper to Gatekeeper: Building Brand in the People's Republic of China (IEM)*

**Oct 23 • 2:00pm–3:15pm • University, HI**  
**Presenters:** *Shawn Mahoney, Edge Learning Center; Gordon Wong, Edge Learning Center*

Tired of being held to your ranking when interacting with families in China? This session walks you through ways to break the ranking barrier and move the conversation forward with Chinese families; build name recognition, and see an improvement in both student quality and quantity in your applicant pool.

### *Study Abroad Alumni Programming: An Exploration of Diverse Applications (EA)*

**Oct 23 • 3:45pm–5:00pm • Hyalite, BW**  
**Presenters:** *Chelsea Kindred, Academic Programs International; Chris Churma, Colorado State University*

This session will explore best practices for plugging your study abroad alumni back into their home community—both on and off campus. As advocates for the international experience, our alumni hold a unique voice within the community. This session will provide unique programming ideas for capitalizing on your returned student's enthusiasm and talent. Particularly, the presenters will detail how to best utilize returned students' experiences in a peer advisor program, with marketing and outreach opportunities, as advocates for civic engagement, and as a tool for returned students' professional development and preparation.

Because insurance  
is not enough.

**HTH Worldwide**

Visit [www.hthstudents.com](http://www.hthstudents.com)  
Call 1.888.243.2358 or 1.610.254.8769  
Email [Customerservice@hthworldwide.com](mailto:Customerservice@hthworldwide.com)



### *Book Discussion: "The Boy Who Harnessed the Wind" (PAN-NAFSA)*

**Oct 23 • 3:45pm–5:00pm • University, HI**  
**Presenters:** *Maria Beebe, Kansas State University; Miranda Panzer, Kansas State University; Sara Thurston-Gonzalez, Kansas State University*

This session will be a facilitated book discussion on the "The Boy Who Harnessed the Wind" by William Kamkwamba and Bryan Mealer. William Kamkwamba was born in Malawi, a country where magic ruled and modern science was mystery. It was a land withered by drought and hunger. But William had read about windmills, and dreamed of building one that would bring to his village a set of luxuries that only 2 percent of Malawians could enjoy: electricity and running water. His neighbors called him misala—crazy—but William refused to let go of his dreams. With a small pile of once-forgotten science textbooks; some scrap metal, tractor parts, and bicycle halves; and an armory of curiosity and determination, he embarked on a daring plan to forge an unlikely contraption and small miracle that would change the lives around him. (Description from amazon.com)

# Sessions • Wednesday • October 23

## ***Doing the Two-Step: How Community Colleges and Universities Partner for Success (IEM/ISSS)***

**Oct 23 • 3:45pm–5:00pm • Lewis, BW**

**Presenters:** *Nancy Currey, Northern Arizona University; Amanda Enriquez, Northwest College*

Discover and explore ways in which community colleges and universities can successfully partner to maximize recruitment, increase enrollment and ensure the academic achievement and personal growth of international students. With a detailed analysis of a foreign student's path through the American educational system, this session gives concrete examples of step-by-step collaboration between 2-year colleges and research universities in providing for the admissions, advisement and graduation of international students. We document the benefits for our institutions and students alike and suggest how you can create relationships that foster these possibilities.

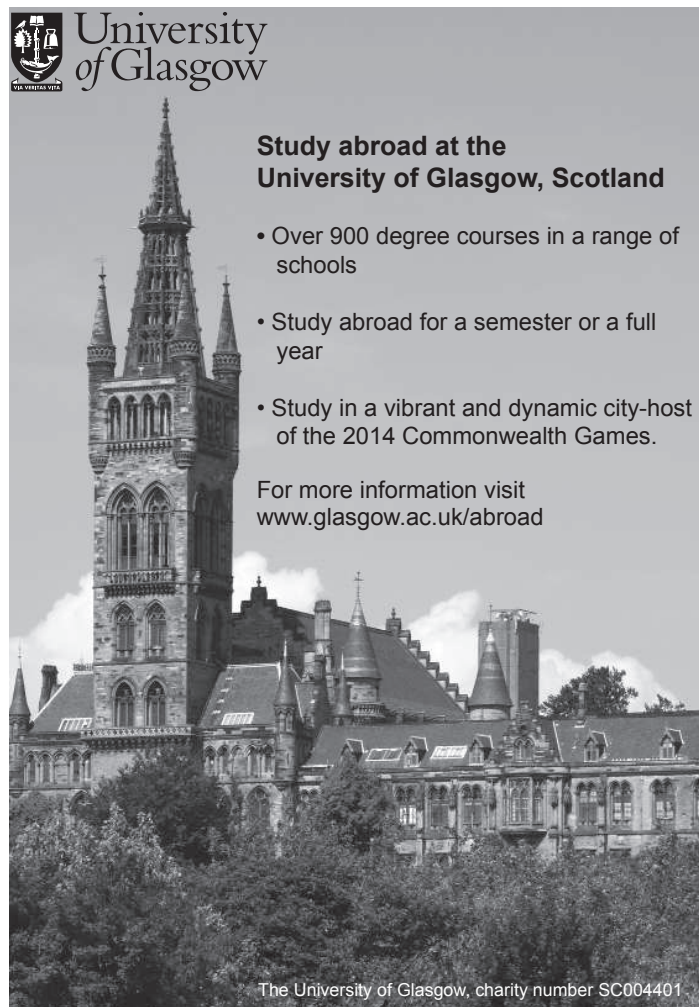
## ***Managing Your Personal Finances as an International Educator (PAN-NAFSA)***

**Oct 23 • 3:45pm–5:00pm • State, HI**

**Presenters:** *Steven Sweat, University of Kansas; Michelle Jackson, University of Colorado at Boulder*

You work hard to serve your students every day, but how much of your hard-earned money do you see at the end of each month? As professionals in higher education, the salaries that we have to work with might seem meager, but when you actively engage in managing your money, you can accomplish unbelievable goals. These presenters are fired up about helping you take control over your future finances. This session will:

- Explore how to take advantage of the benefits and resources that your campus has to offer
- Show you how to keep more of your money and take charge of telling it where to go
- Look at the money decisions of the average millionaire—many are in the field of education!
- Look at how longevity in the field affects income and retirement



**Study abroad at the University of Glasgow, Scotland**

- Over 900 degree courses in a range of schools
- Study abroad for a semester or a full year
- Study in a vibrant and dynamic city—host of the 2014 Commonwealth Games.

For more information visit  
[www.glasgow.ac.uk/abroad](http://www.glasgow.ac.uk/abroad)

The University of Glasgow, charity number SC004401

## ***“From Good to Great”: Best Practices for University-Provider Relations (EA)***

**Oct 23 • 3:45pm–5:00pm • Clark, BW**

**Presenters:** *Amber Kettmann, CIS Abroad; Nikki Powers, GoAbroad.com; Aimee Dixon, Metro State University of Denver*

University study abroad offices and third-party providers have the unique opportunity to offer amazing choices and support to their students. However, building a constructive relationship between a university and a provider can sometimes be a difficult process to navigate. Join us as we discuss effective methods for both sides to maximize partnerships and get the most out of the relationship. Positive university-provider connections are key to a smooth student experience - learn what that means for you! Feel free to bring examples of difficult situations for us to discuss as a group.

## ***Advanced Issues in H-1B Processing (ISSS)***

**Oct 23 • 3:45pm–5:00pm • Madison, BW**

**Presenters:** *Elaine Kimbrell, Ware/Gasparian*

This session will focus on advanced issues in H-1B processing, including a discussion of layoffs, furloughs and salary reductions, off-site employment, changes in work locations and third party placement. We will also discuss deemed export determinations. The session will also cover portability, preparing for permanent residence and extensions beyond the 6th year. Finally, we will discuss current Request For Evidence (RFE) trends for higher education.



# Sessions • Thursday • October 24

## ***Fulbright International Education Administrators Seminars (PAN-NAFSA)***

**Oct 24 • 9:00am-10:15am • University, HI**

**Presenters:** *Inger Bull, Colorado College; Kay Forsyth, Utah State University; Aaron Rose, Brigham Young University*

The Fulbright Scholar Program now offers six, two-week seminars designed specifically for International Educators: France, Germany, India, Japan, Korea, and the United Kingdom. This session will feature three Region II members who have participated in seminars in Germany, India, and Japan. They will share their experiences and discuss the eligibility requirements and deadlines which differ for each of the six seminars. The seminars are valuable professional development opportunities, especially for those in mid-career. The seminars focus on the higher education system in each country and provide opportunities to meet with colleagues at selected colleges and universities in each country.

## ***The Intersection of Academics and Immigration: Making Progress Toward a Degree***

**Oct 24 • 9:00am-10:15 • Montana, HI**

**Presenters:** *Jill Krug, Ciber, Inc.; Julie Wilbers, University of Colorado at Denver*

This session will discuss the intersection of academics and immigration related to F-1 international students. We will evaluate actual case studies, including academic reduced course loads, academic suspensions, terminations for failure to make progress toward a degree, the extent of academic advising in the immigration office, relationships with academic advising offices and on-campus resources, and much more. We will also discuss where immigration and academics are distinctly separate, where they are interlinked, and how to recognize this fine line.

(See [www.englercpa.com/international.html](http://www.englercpa.com/international.html))

## ***Financing Education Abroad – Current Issues and Best Practices (EA)***

**Oct 24 • 9:00am–10:15am • Madison, BW**

**Presenters:** *Michele Arellano, University of Kansas; Shamera Loose, Colorado State University*

Understanding current financial issues and processes are crucial to study abroad staff and students. Relationship building and information sharing between the Study Abroad Office, Registrar's Office and Financial Aid Offices are key in order to provide support for students. This panel presentation and discussion focuses on current financial aid and funding issues (Federal funding, VA benefits, credit hour maximums and consortium agreements) and creative ways of building connections in order to stay informed.

## ***Faculty-led International Programs (FLiP) at NMSU: Challenges, Successes and Lessons Learned (EA)***

**Oct 24 • 9:00am-10:15am • Lewis, BW**

**Presenters:** *Ed Boles, New Mexico State University; Kristi Drexler, New Mexico State University*

Housed in the Office of Education Abroad, the newly created Faculty-Led International Program (FLiP) at New Mexico State University (NMSU) is focused on helping faculty create their ideal courses as intensive learning experiences within the international settings of their choosing. Eight courses were conducted abroad in 2013 and this number is expected to triple for 2014 representing multiple departments bringing courses in five continents. The FLiP office is run by coordinators who have years of experience running international courses and understand both the administrative and the on-the-ground logistical aspects of successful course facilitation. Faculty are in full control of course development, with FLiP coordinators assisting with all program administrative requirements, leaving faculty more time to concentrate on instructing their course. FLiP coordinators help faculty to offer students opportunities for international travel in small groups for shorter periods of time at less cost.

## ***Developing a Strategic International Enrollment Management Plan (IEM)***

**Oct 24 • 9:00am–10:15am • Hyalite, BW**

**Presenters:** *Jim Crawley, ELS Educational Services; Mandy Hansen, Northern Arizona University*

There is significant planning and research that should go into the development of an International Strategic Enrollment Management Plan. Surprisingly many schools do not really have a plan in place before they decide to travel each Fall or Spring. Decisions are sometimes made with limited data or information even though most of what is needed is normally easily accessible. This session is intended for those relatively new to the field and will be especially helpful for those from institutions who are new to international recruitment and/or for those that are refocusing their recruitment efforts on different regions.

## ***Comprehensive Immigration Reform: Where Are We and Where Are We Going? (ISSS)***

**Oct 24 • 9:00am–10:15am • State, HI**

**Presenter:** *Emily Curray, Stern and Curray*

Congress is debating Comprehensive Immigration Reform. Regardless of outcome, the debate itself and the bill if one is passed will impact immigration policy for decades. The session will focus on the legal and policy implications of this process.

# Sessions • Thursday • October 24

---

## ***Implementing a Global Engagement Framework in a Rural, Two-Year Institution (IEL)***

**Oct 24 • 9:00am–10:15am • Clark, BW**

**Presenters:** *Alex Peterson, Snow College; Sam Heikinen, Snow College*

Can a rural, two-year college in central Utah transform the century-old college experience it has offered its mostly homogenous student and faculty population to one that allows its students to truly become “Global Scholars”? Snow College has designed and implemented a Global Scholars Program that involves modifying existing curricula, global engagement opportunities abroad and at home, and involves faculty, students, invited experts from outside Utah, and the creation of new specialized committees and initiatives. The Center for Global Engagement has worked to facilitate the process by outlining a Global Engagement Advisory Committee, working with experts from outside Utah, Designing a Global Scholars Program and Global Ambassadors Program.

## ***Keeping International Students Healthy in the U.S. (ISSS)***

**Oct 24 • 10:45am-Noon • Hyalite, BW**

**Presenters:** *Jennifer Frankel, International Student Insurance; Barb Seekins, University of Montana; Jan Willems, Doane College*

This session introduces attendees to the US healthcare system and how it impacts international students. We will discuss ways to help orient students to life in the US, including what to do in an emergency, how to seek medical treatment and how to stay healthy. We will discuss the many resources available to students, best practices in introducing students to the health care system and how to overcome some of the challenges faced by students unfamiliar with the US health care system. The session concludes with an interactive forum for attendees to share their experiences and resources in facing these issues.

## ***Serve International Education through NAFSA Leadership (PAN-NAFSA)***

**Oct 24 • 10:45am-Noon • Clark, BW**

**Presenters:** *Cathy Lee T. Arcuino, Pittsburg State University; Jim Crawley, ELS Educational Services, Inc.*

The strength of international education depends on you! Through leadership and service in NAFSA you can help influence public policy, the path of the association, and the services provided to international educators. Come and discover a myriad of long-term and short-term volunteer and leadership opportunities that will help you develop your skills, expand your professional networks, and advance international education objectives on state, regional and national levels. So whether you're a newcomer or a seasoned professional, learn how to share your talents!

## ***Study Abroad for All: Engaging Underrepresented Students in Education***

**Oct 24 • 10:45am-Noon • University, HI**

**Presenters:** *Angela Miller, Northern Arizona University; Sharon Doctor, Northern Arizona University*

Study Abroad has become an essential vehicle for developing intercultural and global competencies among college students. An increasingly global marketplace demands workers who demonstrate these competencies; However, only 1% of 20 million U.S. college students study abroad in a given year (Open Doors, 2012). Students of color are historically under-represented in study abroad, (Asian/Pacific Islanders represent 7.9%; Hispanic/Latino, 6.9%; Black/African-American, 4.8%; Multiracial, 2.1%, and American Indian or Alaska Native.5%) (Open Doors, 2011). This session will provide cultural understanding of specific ethnic groups and the barriers they face when making a decision to study abroad. Participants will learn how to increase the participation of under-represented students in study abroad, understand their choice process, identify their needs, and provide the necessary support for a successful study abroad experience.

## ***Aiming for Success, Not Just Status: Helping International Students Effectively Navigate the U.S. Higher Education System (ISSS)***

**Oct 24 • 10:45am-Noon • Madison, BW**

**Presenters:** *Deana Olsen, University of Kansas; Amanda Enriquez, Northwest College; Adrienne Hamann, Master of Arts Thesis Candidate at Lesley University*

Presenters from diverse institutional perspectives converge to highlight best practices and practical methods of supporting international students as they navigate the U.S. higher education system. As global trends see student movement and economic factors continue to fluctuate, institutions are becoming more focused on retention and student success. This session discusses current retention theories as well as core target areas, including linguistic, cultural, social and academic within the context of student success. Participants will come away with practical troubleshooting tips and basic considerations when focusing on retaining students and helping them achieve success.

## Sessions • Thursday • October 24

### ***Off the Beaten Path: Enhancing Cultural Immersion in Faculty-Led Programs (EA)***

**Oct 24 • 10:45am-Noon • Montana, HI**

**Presenters:** *Christine Freudenburg, International Studies Abroad; Beth Calvert, International Studies Abroad; Kyle Rausch, Arizona State University*

As the popularity of faculty-led programs grows on campuses nationwide, so has the need to ensure an academically-enriching experience for students. In this panel, we bring together the perspective of an academic program provider (International Studies Abroad), study abroad office, and faculty leader to address how faculty-led programs can design an immersive experience for students and ensure the academic quality of programs before they even leave the U.S. We argue that cultural immersion is an integral component of any study abroad program.

### ***Adding an Online Component to Study Abroad Pre-departure Orientation (EA)***

**Oct 24 • 10:45am-Noon • State, HI**

**Presenters:** *Elizabeth Davis, Kansas State University; Nikki Powers, GoAbroad.com*

Many institutions are considering moving part, if not all, of their study abroad pre-departure orientation to an online format. This session will examine how one university came to the decision to use some online features for its pre-departure orientation and how it implemented its new online format. Covered during the session will be tips about how to determine if an online format, or partial online format, would work for your institution, as well as the challenges and advantages of having an online component to orientation. Different platform options for hosting pre-departure information will also be covered. Additionally, where to find online resources and how to share that information effectively with students will be discussed. During the session, attendees will have the opportunity to share their ideas and what their institution does.

### ***Ramping Up Your State International Educators Association (PAN-NAFSA)***

**Oct 24 • 10:45am-Noon • Lewis, BW**

**Presenters:** *Ken Bus, Glendale Community College; Cathy Ribic, Northern Arizona University; Debi Parris, Embry-Riddle Aeronautical University*

Arizona International Educators (AIE) has existed as a loosely organized, unofficial group of colleagues in the state who wanted to have opportunities for networking. Recently, however, the group has taken some bold steps to register their name, create a logo, write guidelines for leadership, open a bank account, and create a website. This session will share what Arizona's group is doing with NAFSAs from other states in Region II who might be interested in strengthening their own organizations.

### ***DREAMZone: An Undocumented Student Ally Development Training Program (ISSS)***

**Oct 24 • 2:15pm-3:30pm • Montana, HI**

**Presenters:** *Monica Keyes, Arizona State University*

In 2012, the DREAMer Research Initiative at Arizona State University developed DREAMzone, a comprehensive professional development training program providing students, staff, and faculty with the knowledge, skills and resources necessary to effectively support undocumented students through their college persistence. DREAMzone has proven successful in elevating ASU students, staff and faculty's levels of awareness and competencies for working with undocumented students within the scope of their positions, and evoking dialogue at all levels to better serve this population. The goal of this session is to not only prepare international education practitioners to work with undocumented students, but also contribute to the development of more inclusive campus environments cognizant of the realities of the undocumented student experience.

### ***Integrating Study Abroad into Innovative Language Curriculum (EA)***

**Oct 24 • 2:15pm-3:30pm • Clark, BW**

**Presenters:** *Norman Peterson, Montana State University; Galen Brokaw, Montana State University; Yvonne Rudman, Montana State University*

In this session, a language department head, international program administrators and a former language student will describe how the innovative U.S. Arabic Distance Learning Network consortium model (1) expands study abroad opportunities for U.S. students, (2) involves foreign students who are native speakers of the target language, (3) leverages resources across a network of participating institutions, and (4) opens pathways to otherwise unattainable careers for students from multiple disciplines. The Network model demonstrates how language instruction can be delivered by a master teacher via distance learning technologies and supported by native speakers on campus to prepare students for immersion experiences in countries where the language is spoken.



# Sessions • Thursday • October 24

---

## ***The Education System of China (IEM)***

**Oct 24 • 2:15pm-3:30pm • Madison, BW**

**Presenters:** *Lindsey Gullicksrud, Educational Credential Evaluators, Inc.*

According to the Institute of International Education, there were 194,029 students from China studying in the United States for the 2011-2012 academic year (a 23% increase from the previous year). Chinese students make up 25% of the total population of international students in the US. This session is intended to provide information about the educational system and academic credentials of China. Topics will include an overview of the educational system, primary and secondary education, higher education, key vocabulary, and examples of documents.

## ***Understanding What Makes Students Tick: Motivations and Barriers for Today's Students Looking to Study Abroad (EA)***

**Oct 24 • 2:15pm-3:30pm • University, HI**

**Presenters:** *Aimee Dixon, Metropolitan State University of Denver; Jennifer Provizer, Metropolitan State University of Denver; Dawn Huston, CET*

While study abroad participation has more than tripled over the past two decades only one percent of U.S. students participate in an overseas program. During this session we are evaluating both real and perceived barriers students face when contemplating a study abroad program. As a means to improve general advising and increase study abroad participation at any institution, we will also take a look at what motivates today's students seeking to study abroad. We will be using a recent study released by the British Council Broadening Horizons: Breaking through the Barriers to Overseas Study (2012) as well as additional research and personal experience. Come ready to share ideas.

## ***No Two Are Alike: Recognizing Your Leadership Qualities (PAN-NAFSA)***

**Oct 24 • 2:15pm-3:30pm • Hyalite, BW**

**Presenters:** *Nancy Hyde, Utah State University; Eric Sims, Utah State University*

Are you a George Washington kind of leader? Or maybe a Mother Teresa? There are as many types of leaders as there are people, but we often do not recognize ourselves as leaders. A recent informal survey of 21 higher education professionals shows some interesting perspectives and insights that can be applied to leadership in international education. In this discussion, participants will share ideas for day-to-day leadership practices, including how to embrace and use your unique style to do your job in a way no one else can and how to recognize and seek out complementary leadership styles to promote synergy and satisfaction in the workplace.

## ***Self-Evaluation for the Exchange Visitor Program (ISSS)***

**Oct 24 • 2:15pm-3:30pm • Lewis, BW**

**Presenters:** *Maria Beebe, Kansas State University; Catherine Ann Ribic, Northern Arizona University; Lisa Pappas, Colorado State University*

The Exchange Visitor Subcommittee has prepared a list of questions to guide us in evaluating the J programs on our campuses. This session will be an open discussion on how we answer these questions as well as how we are incorporating "cultural exchange."

## ***Speaking Their Language: Communicating Effectively With Faculty to Develop Meaningful Short-Term Programs (EA)***

**Oct 24 • 2:15pm-3:30pm • State, HI**

**Presenters:** *Kyle Rausch, Arizona State University; Carrie Niesen, Melibee Global Education Consulting; Juan Fernandez-Iglesias, Winona State University; Vanessa Fernandez-Greene, Winona State University*

This session will focus on the importance of employing effective communication strategies in maximizing collaboration with faculty members leading, developing, and directing short-term education abroad programs. Specifically, the panel will provide a theoretical yet pragmatic application of communication theory from a communication instructor as it applies to this context. Additionally, experienced professionals who have taught and employed successful strategies from the context of an education abroad administrator and faculty members who have led programs abroad will provide their best practices.

## ***Optimizing the Reentry Process (EA)***

**Oct 24 • 3:45pm-5:00pm • Madison, BW**

**Presenters:** *Raquel Arouca, Post-doc Intern, The University of Montana*

It is not just reentry shock that students go through when returning home; it is a reentry process, a process that starts with the study abroad experience as an integral part of reentry because the changes happening in the reentry period stem from the experiences and changes that happened while abroad. However, part of the reentry process is reentry shock, where reentry shock is the sudden awareness that there is a disconnect between the individual's inner cultural being and the social system around him/her; the reentry process encompasses both the shock and the individual striving to find balance between what changed internally and the reality that s/he faces. A recent qualitative research identified three steps to optimize the reentry process through awareness, re-evaluating real life and validating the experience.

# Sessions • Thursday • October 24

## ***Film: William and the Windmill (PAN-NAFSA)***

**Oct 24 • 3:45pm-5:00pm • Hyalite, BW**

**Presenters: Maria Beebe, Kansas State University**

This film will be a companion to the book discussion to be held on Wednesday.

## ***Getting Past “Everyone Speaks English.” Language Learning and Global Competence (EA)***

**Oct 24 • 3:45pm-5:00pm • State, HI**

**Presenters: Lisa Rooney, Bridge; Jeffrey Longwell, New Mexico State University**

This session has been developed in reaction to an alarming trend in U.S. higher education, in education abroad and in K-12 education as well – the drastic de-emphasis on the importance of foreign language learning. Our immediate goals are to 1) make the argument that the process of learning a foreign language is key to developing cultural competence and intercultural skills (both qualitative and quantitative anecdotal data will be presented based on our preliminary research results) and 2) show how these skills are relevant and desirable in the 21st century workplace. Our bigger picture goal is to spark and foster a dialog in academia about the importance of multilingualism in today’s globalized world. Ultimately, we hope to shift the widespread mindset in the United States that speaking English is enough because “Everyone speaks English.”

## ***Study Abroad Service Learning Across Disciplines (EA/TLS)***

**Oct 24 • 3:45pm-5:00pm • University, HI**

**Presenters: Kelly Monico, Metropolitan State University of Denver; Aaron Brown, Metropolitan State University of Denver; Helle Sorensen, Metropolitan State University of Denver**

This session will center around three unique study abroad courses at Metropolitan State University of Denver that have a shared emphasis on service learning. These courses include Humanitarian Engineering in Costa Rica, Community-Based Design in the Dominican Republic, and Viking Village Ecotourism in Denmark. Although the three courses stem from different academic disciplines, Mechanical Engineering, Art, and Tourism Management, each provides students a special opportunity to apply investigative research processes and strategies within a specific community. Each course also integrates meaningful service learning that positively impacts the community and increases the quality of life for those that don’t have the necessary means to do so themselves. Within these pilot programs, projects were co-produced based on the needs and desires of the specific community.

## ***Updates to the Educational System of Turkey (IEM)***

**Oct 24 • 3:45pm-5:00pm • Lewis, BW**

**Presenters: LesLee Clauson Eicher, AACRAO**

Turkey is in the middle of changes to its education system. At the same time, the numbers of Turkish students graduating secondary school and seeking postsecondary education at home and abroad have never been higher. This session will explore the education system of Turkey for admissions and credential evaluation. We’ll also take a look at the changes and how they affect our Turkish student populations here in the U.S. We will examine actual secondary and postsecondary documents and learn about available resources

## ***International Student Athletes: On your mark, get set, go?! (ISSS)***

**Oct 24 • 3:45pm-5:00pm • Clark, BW**

**Presenters: Carol Solko-Olliff, Fort Hays State University; Karen McCullough, Fort Hays State University; Debi Parris, Embry-Riddle Aeronautical University**

A look at the X’s and O’s that go into an international student athlete getting from the sidelines to competition. This session will look at the process from high school to college that international students navigate through to “get in the game”. We will discuss why we got in the game, equipment and training for those in the game, who else on your campus should be in the game, who should be on the bench and conclude with a post-game wrap up.

## ***Shaking the Money Tree: Making the Most of Financial Resources for International Students (ISSS)***

**Oct 24 • 3:45pm-5:00pm • Montana, HI**

**Presenters: Jennifer Frankel, Envisage International; Caitlin O. Kelley, Kansas State University; Amanda Enriquez, Northwest College**

This session will look at the importance of how schools can set their international students up for financial success from the initial interaction with the student through pre-arrival and post-arrival. We will evaluate costs international student face as well as resources available both on and off campus. Included in this discussion we will talk about working with stakeholders, what you can do on your campus, and what financial aid resources are available to obtain scholarships, grants and loans. The session will conclude with an interactive forum where schools will be able to share what they have done to help students with budgeting, financial aid, and unexpected circumstances.

# Exhibitors List

---

**AACRAO International**

Education Services  
712 North 59th Street,  
Yakima, WA 98901  
202-296-3359  
[www.aacrao.org](http://www.aacrao.org)

**American Institute For Foreign Study**

9 West Broad Street,  
Stamford, CT 06902-3734  
(203) 399-5094  
[www.aifs.com](http://www.aifs.com)

**Arcadia University The College of Global Studies**

313 Sunnyside Ave,  
Itasca, IL 60143-2238  
(215) 920-3240  
[www.arcadia.edu](http://www.arcadia.edu)

**CAPA International Education**

234 West Juniper Street, Apt. 304  
San Diego, CA 92101-1432  
(617) 794-5016  
[www.capa.org](http://www.capa.org)

**CISabroad - Center for International Studies**

17 New South St, Suite 205  
Northampton, MA 01060-4076  
603-219-3709  
[www.cisabroad.com](http://www.cisabroad.com)

**CORT**

15000 Conference Center Drive,  
Suite 440,  
Chantilly, VA 20151  
(703) 322-8627  
[www.cort.com](http://www.cort.com)

**Educational Credential Evaluators, Inc. (ECE)**

PO Box 514070,  
Milwaukee, WI 53203-3470  
[www.ece.org](http://www.ece.org)

**EF Education**

One Education Street,  
Cambridge, MA 02141-1805  
877-235-7895  
[www.ef.com](http://www.ef.com)

**ELS Educational Services, Inc.**

11037 Skyway Lane,  
Allendale, MI 49401-9607  
(609) 356-6586  
[www.els.edu](http://www.els.edu)

**eShipGlobal (Conference Sponsor)**

5800 Campus Circle Drive, Suite 220  
A  
Irving, TX 75063-2740  
(972) 518-1775  
[www.eshipglobal.com](http://www.eshipglobal.com)

**GlobaLinks Learning Abroad**

12050 North Pecos Street, Suite 320  
Westminster, CO 80234-2018  
(303) 446-2214  
[www.globalinksabroad.org](http://www.globalinksabroad.org)

**GoAbroad.com**

324 East Oak Street,  
Fort Collins, CO 80524-2915  
(720) 570-1702  
[www.goabroad.com](http://www.goabroad.com)

**Hollins University**

PO Box 9707,  
Roanoke, VA 24020-1707  
(540) 362-6214  
[www.hollins.edu](http://www.hollins.edu)

**Hotcourses, Inc.**

240 Commercial Street, Suite 4A  
Boston, MA 02109-1315  
(617) 359-4901  
[www.hotcourses.com](http://www.hotcourses.com)

**HTH Worldwide**

8117 E. Gray Rd.,  
Scottsdale, AZ 85260  
(888) 221-1449  
[www.hthworldwide.com](http://www.hthworldwide.com)

**Minds Abroad**

600 Brass Lantern Road,  
Raleigh, NC 27606-9335  
(917) 403-2663  
[www.mindsabroad.com](http://www.mindsabroad.com)

**NAFSA**

1307 New York Avenue NW, 8th  
Floor  
Washington, DC 20005-4715  
202-495-2591  
[www.nafsa.org](http://www.nafsa.org)

**Terra Dotta, LLC**

501 West Franklin Street, Suite 105  
Chapel Hill, NC 27516-2339  
877-368-8277  
[www.terradotta.com](http://www.terradotta.com)

**University of Glasgow**

10164 West Hawaii Place,  
Lakewood, CO 80232-6326  
303-963-6814  
[www.gla.ac.uk](http://www.gla.ac.uk)



# ***Breaking News:***

Special ISO plans are now being offered by more universities with better benefits at the most ***affordable rates!***



## ISO Student Health Insurance

*Let us cater to your international students*



**Student Health Insurance**

[www.isoa.org](http://www.isoa.org)  
[mailbox@isoa.org](mailto:mailbox@isoa.org)  
(800) 244-1180



# Your Plan... Our Passion



## Managing Risk for International and Study Abroad Students Since 1991

Complete In-house Plan Administration

Multilingual Service Team

ESL and Other Short Term Plans

Compliant with the Affordable Care Act

Annual Scholarship Contest



**LewerMark®**  
STUDENT MEDICAL INSURANCE

Jeff Crawford, VP Student Insurance

1 (800) 821-7715, ext. 148 | [jcrawford@lewer.com](mailto:jcrawford@lewer.com)

[www.lewermark.com](http://www.lewermark.com)



REAL WORLD

TRANSPORTATION MANAGEMENT  
AND COMPLIANCE SOLUTIONS

THAT ENHANCE YOUR BUSINESS

**eShipGlobal™**

Learn more at [www.eshipglobal.com](http://www.eshipglobal.com) or  
talk to our Customer/Technical Support  
Monday - Friday, 8:00 am - 6:00 pm CST  
800.816.1615 | [info@eshipglobal.com](mailto:info@eshipglobal.com)



# Live without regrets, Learn without borders.



Discover where you'll study  
abroad at **usac.unr.edu**

YouTube f t o  
@StudyAbroadUSAC

**USAC**   
University Studies Abroad Consortium