

Visa Updates

NAFSA: Association of International Educators

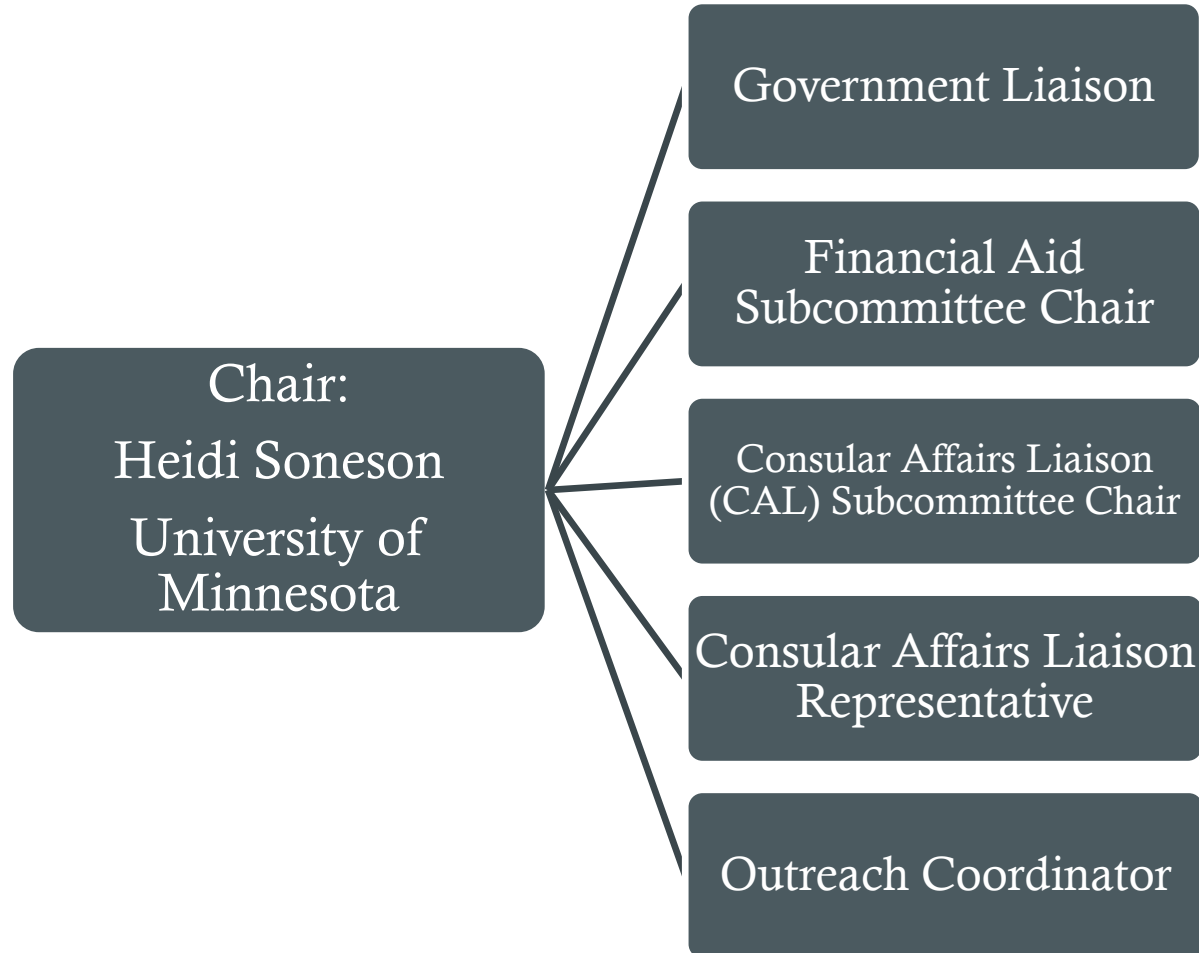
Education Abroad Regulatory Practice Committee &
Consular Affairs Liaison Subcommittee



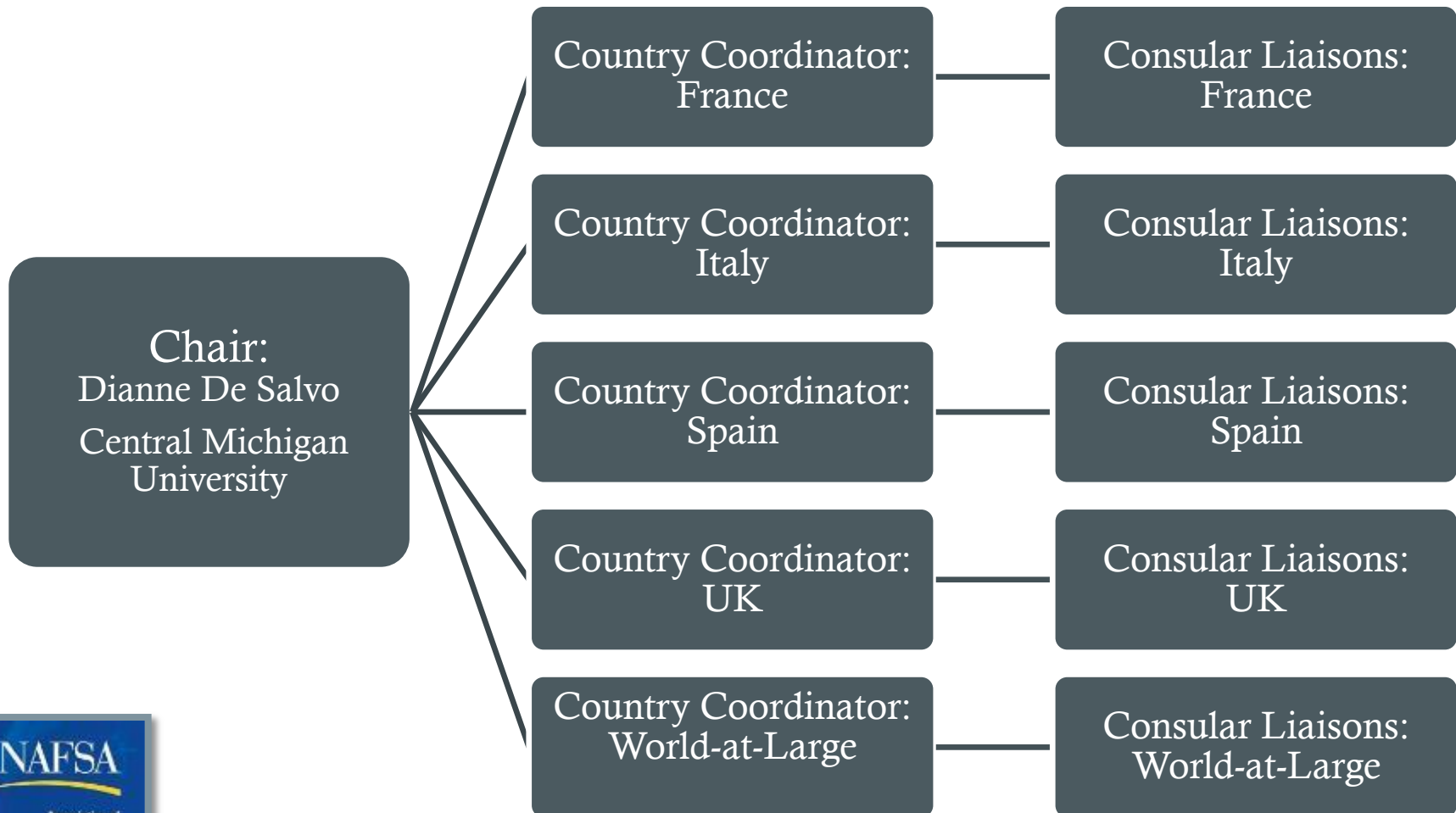
Presenters

- **Deborah Miller (Italy)** - Associate Director, Enrollment Services at Boston Univ.
- **Emily Brazer (France)** - Assistant Manager, Office of Study Abroad & International Experiences at University of Massachusetts, Lowell
- **Lee Frankel (Spain)** – Director at Academic Studies Abroad (ASA) and Academic Year Abroad (AYA)

NAFSA: Education Abroad Regulatory Practice Committee



NAFSA: Consular Affairs Liaison Subcommittee




FIND RESOURCES

Visas For Education Abroad

The following information is designed to assist education abroad advisers as they guide their students to obtain a student visa to study abroad. NAFSA's Education Abroad Regulatory Practice (EA RP) Consular Affairs Liaison Subcommittee members review these pages regularly for accuracy, but the consulate to which the student applies for a visa may change its procedures. Students and advisers should confirm specific procedures with each relevant consulate.

Additional general information relevant to education abroad is available under [NAFSA Regulatory Information](#).

NAFSA has two EA Visa subcommittees:

- The Consular Affairs Liaison Subcommittee (46kb ) is available to assist you with your visa questions. [Submit questions through EA Visa Help.](#)
- The Visa Education Subcommittee (65kb ) provides educational resources about the visa application process.

COUNTRY-SPECIFIC INFORMATION



Cuba



France



Italy



Spain



United Kingdom



Schengen

GENERAL VISA FAQs

Keep up-to-date on the latest requirements for acquisition of foreign visas for study abroad.



ADVANCING PUBLIC POLICY FOR INTERNATIONAL EDUCATION

INTERNATIONALIZING HIGHER EDUCATION

SUPPORTING INTERNATIONAL STUDENTS & SCHOLARS

SUPPORTING STUDY ABROAD

EA VISA HELP

Submit your question to get help on specific visa issues for U.S. students and faculty studying abroad.

[EA Visa Help](#)





Education Abroad

Submit questions to get help on specific visa issues for U.S. students and faculty studying abroad.

[Request Visa Help](#)

International Students & Scholars

Inform the Regulatory Practice Committee about emerging trends or government obstacles for studying abroad or incoming students and scholars.

[Report an Issue](#)

Contact your Regulatory Ombud for assistance with specific immigration cases at USCIS Service Centers. **Before submitting your request:**

[Get Liaison Help](#)

1. [Look for answers in the NAFSA Adviser's Manual](#)
2. [Follow the steps in NAFSA's suggested procedures](#)



Education Abroad Visa Help

Step 1 of 3: Adviser Information

Allison Cash Spiro (allisons@nafsa.org)
NAFSA Office
Professional Development Services

1307 New York Avenue NW, 8th Floor
Washington, DC 20005-4704
T: 202-737-3699 x2568 F: 202-737-3657

Part II - Required Information

Visa Information

This issue relates to:

- France
- Italy
- Spain
- United Kingdom
- Other



Select one of the top four countries
or any "other" country.

*** This field is required**

Part IV - Additional Details for Visa Issue

What actions, if any, have been taken by the student and/or adviser to resolve this issue?

1000

If the consulate has responded provide more details

1000

Enter up to 1000 characters into each text field. The remaining space is shown as you type.

Additional information?



1000

Submit

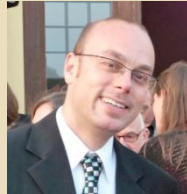


FRANCE

Country Coordinator

Jason Sanderson

Georgetown University



Regional Liaisons

- *Atlanta*: Open Position
- *Boston*: Emily Brazer
- *Chicago*: Janis Halpern
- *Houston*: Jane Chandler
- *LA*: Open Position
- *Miami*: Open Position
- *NY*: Rebecca James
- *SF*: Noah Kuchins



- **CampusFrance Updates**
 - Fees have been increased to \$100
 - Money orders must now be made out to MCUFEU
 - Students should upload a copy of their acceptance letter to PASTEL where it asks for a high school transcript
 - Average processing time is 3 weeks (longer as the summer progresses)
- **Consulate Updates**
 - All consulates have harmonized the supporting documentation requirements, but students should check the website of their individual consulate for exact information
- **OFII Updates**
 - Single-semester students (91-180 days) must choose at the time of application whether or not to go through OFII
 - Students who opt out of OFII cannot extend the validity of their visa on site
 - Students studying in France longer than 180 days are required to go through OFII



ITALY

Country Coordinator

Karen Wardzala

Georgetown University



Regional Liaisons

- *Boston*: Debbie Miller
- *Chicago*: Rosemary Sands
- *Detroit*: David Younger
- *Houston*: Erika Payán Zanetti
- *LA*: Katerina Georgieva
- *Miami*: Sarah Egerer
- *NY*: Suzanne Shane
- *Philadelphia*: Scott Keller
- *SF*: Noah Kuchins
- *Washington DC*: Karen Wardzala

Two-step Immigration process

Student Visa Requirements (above 90 days)

- US & Non-Schengen Nationals: Visa is required; use *National* visa application form; no cost for study visa

Visa Requirements (below 90 days)

- US and Nationals of visa-waiver countries: No Visa
- International students from non-visa waiver countries (China, Haiti, etc.): Visa is required; use *Schengen* visa application form

Permesso di Soggiorno (Permit of Stay)

- All students (even EU citizens) staying 90 days or more in Italy must complete the PDS kit
- Cost for Visa holders: 153,22€ (various fees)

Updates and Important Notes

- San Francisco and DC – no batch visa processing
- In-person Appointments required at most consulates
- No 1 problem: Financial documentation
- Visa Requirements vary by consulate – check websites!

Encourage students to begin the application process as soon as possible within the 90 day window before their program start date.



SPAIN

Country Coordinator

Holly Zimmerman-LeVoir

University of Minnesota



Regional Liaisons

- *Boston*: Lee Frankel
- *Chicago*: Danette Bontrager
- *Houston*: Minita Santizo
- *LA*: Monica Reynolds
- *Miami*: Regina Foster
- *NY*: Tina Breakell
- *SF*: Holly Frohlick
- *Washington DC*: Open



- **Background checks**
 - Only required for student stays of more than 180 days. May be State Police issued check WITH Apostille stamp, or FBI Check.
- **Batch processing by study abroad offices/universities**
 - Allowed at most of the consulates except DC and San Francisco.
 - There are different requirements for individuals than for batch processing.
 - Check with your specific consulate for times available for batching.
- **Appointments vary**
 - Most consulates have on-line companies handling the scheduling of appointments. DC and Houston take walk-in customers and do not accept appointments. Check the consulate websites to see updated information
- **Non-U.S. citizens**
 - Most consulates accept Schengen and student visa applications from non-U.S. citizens
 - Always check Consulate website before submitting as changes can happen without notice.



Country Coordinator

Laurence Tuccori

University of Kentucky



Regional Liaisons

- Shima Gorgani
- Amber Schneider
- Christine Menand
- Justin Williams
- *Open Position*



• Two Student Routes

- Student Visitor
 - Less than 6 months (no work, internships or volunteering permitted)
- General Student Visa Under Tier 4
 - For courses longer than 6 months, and all courses involving study + work/internship
- Streamlined application process for students from low-risk countries attending Highly Trusted Sponsor institutions
 - No longer need evidence of funding
 - Consulate could still request funding
- Guidance states to allow for 6-week minimum processing
 - Or choose Priority (\$150) processing at time of application mailing
 - UKBA goal to process the majority of applications within 15 business days

OTHER COUNTRIES

Country Coordinator

Beth Laux

University of Utah



World-at-Large Liaisons

- Aaron Caplan
- Joe Sevigny
- Miguel Ayllon
- Craig McDonald
- Lisa Brown
- Joe Milostan
- Mireille McLaughlin
- *Open Position*

- Reference the www.nafsa.org/eavisas for updates on recent visa changes for various countries
- Submit visa requests to EA Visa Help
 - Beth's team will attempt to help
 - www.nafsa.org/eavisahelp
- Contact Beth through EA Visa Help
 - www.nafsa.org/eavisahelp
- To find out about volunteer opportunities with CAL, please visit www.nafsa.org/openpositions

SCHENGEN STATES

Coordinator

Jason Sanderson

Georgetown University



- **Schengen and the E.U.**
 - 5 E.U. member states (U.K., Ireland, Bulgaria, Cyprus and Romania) are not currently part of the Schengen Area
 - 4 E.U. non-member states (Iceland, Liechtenstein, Norway and Switzerland) are part of the Schengen Area
- **Schengen vs. National Visas**
 - Schengen visas are limited to 90-day stays in the Schengen Area
 - U.S. passport holders are generally exempt from obtaining a Schengen visa
 - 90-day limit out of 180 rolling calendar days (all checkpoints can now access this information)
 - No central authority to refer cases – each country may interpret treaty differently



FBI Record

- First determine if the consulate does indeed want a record from the FBI. Otherwise, a state police record may suffice and is faster to obtain.
- When authentication of the FBI record is required, send record to the Office of Authentications at the US State Department to request an apostille.
- Fingerprints from any police station or local law enforcement office will be required. Call ahead for fingerprinting office hours. Request 2-3 sets of prints.
- Processing time is approximately 10 weeks.
 - Students with strict time limits who wish to expedite the Department of State authentication process are encouraged to work with a visa processing service (may be able to get authentication within 24 hours)
- Nearly 25 percent of requests for records are denied because of missing information, illegible fingerprints, or incorrect payment.
- FBI: <http://www.fbi.gov/about-us/cjis/background-checks/faqs>

International Student Visas

- Many Countries require visa for non-US students
 - Countries may require entry visas (even if U.S. citizens are not required to obtain a visa)
 - Visa fee may vary based on the country of origin of the applicant
 - Students may have to appear in person
 - Some countries may require transit visas even if that country is not the student's final destination
 - Countries may require a valid US. Visa
 - Foreign students should check with their advisors to obtain information for reentry to the US prior to travel for study abroad.

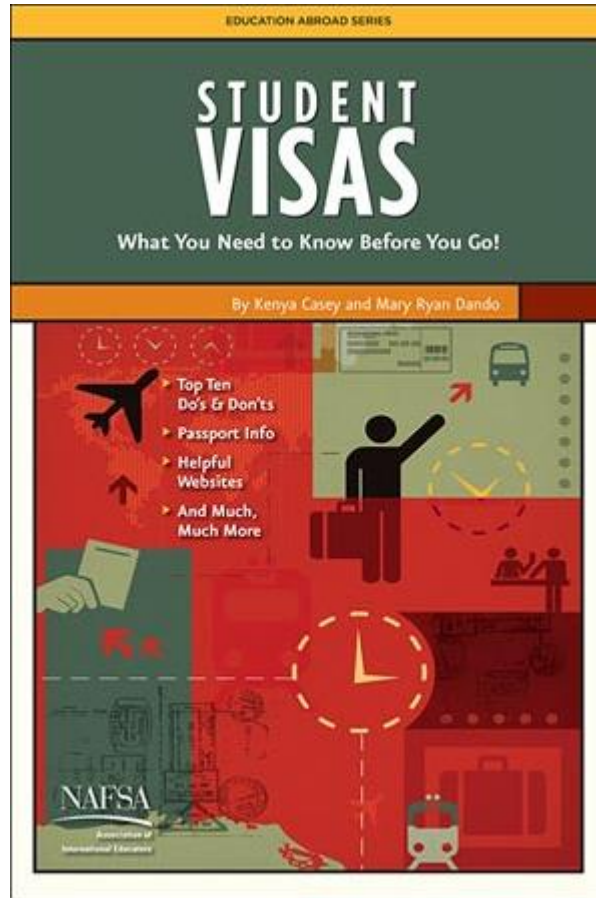
Visa Process

- Visa application process:
 - Home institutions takes charge of application process
 - Program sponsor takes charge of application process
 - Student is responsible for application process
- Consider the possibility of using a visa processing agency for relevant countries to ensure accurate review of visa applications and support

NAFSA Help

- Committees
 - Education Abroad Regulatory Practice Committee
 - Consular Affairs Liaison Subcommittee
- Online
 - Visa Updates: www.nafsa.org/eavisas
 - Visa Assistance: www.nafsa.org/eavisahelp
 - Note: Register for a NAFSA ID and password
- Publication
 - *Student visas: What you need to know before you go*

Publication



- *Student Visas*
 - Top 10 do's and don'ts
 - FAQs
 - Passport information
 - Helpful web sites
 - Glossary of visa terms
 - [Purchase online](#)

Thank You

Get involved with CAL:
Make a connection with the consulate
Learn visa processing updates
Share your expertise with others in the field

To find out about volunteer opportunities with CAL or the Visa Education Subcommittee, please visit
www.nafsa.org/openpositions

