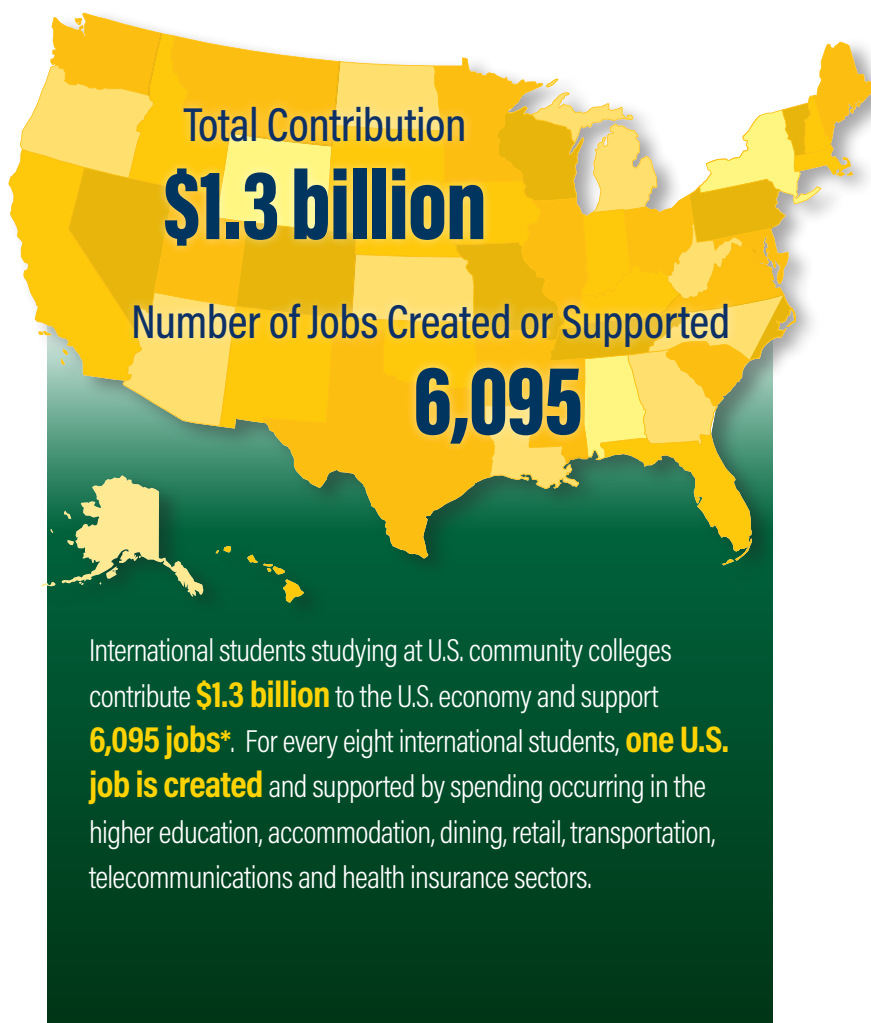


Economic Value of International Students at U.S. COMMUNITY COLLEGES



State	Int'l Students	U.S. Dollars	Jobs
Alabama	127	\$3.2 million	14
Alaska	N/A†	N/A†	N/A†
Arizona	808	\$18.7 million	88
Arkansas	63	\$1.3 million	5
California	13,459	\$404.3 million	1,932
Colorado	294	\$76 million	37
Connecticut	54	\$1.4 million	7
Delaware	N/A†	N/A†	N/A†
District of Columbia	N/A†	N/A†	N/A†
Florida	4,041	\$103.8 million	502
Georgia	897	\$30.5 million	160
Hawaii	581	\$16 million	72
Idaho	N/A†	N/A†	N/A†
Illinois	806	\$19 million	99
Indiana	270	\$6.1 million	27
Iowa	531	\$8.9 million	36
Kansas	633	\$12.3 million	52
Kentucky	83	\$2 million	9
Louisiana	131	\$2.3 million	10
Maine	74	\$1.5 million	7
Maryland	1,602	\$52 million	523
Massachusetts	923	\$22.5 million	110
Michigan	904	\$17 million	76
Minnesota	416	\$7.9 million	35
Mississippi	47	\$719,350	3
Missouri	397	\$8.3 million	41
Montana	33	\$685,171	3
Nebraska	214	\$3.1 million	13
Nevada	273	\$7 million	32
New Hampshire	2	\$78,306	N/A
New Jersey	869	\$20.8 million	99
New Mexico	132	\$2.8 million	12
New York	2,282	\$62.5 million	285
North Carolina	838	\$18.8 million	88
North Dakota	39	\$602,054	2
Ohio	956	\$19.9 million	94
Oklahoma	466	\$10.2 million	46
Oregon	637	\$15.8 million	70
Pennsylvania	299	\$7.2 million	37
Rhode Island	4	\$89,076	N/A
South Carolina	320	\$6.7 million	31
South Dakota	9	\$160,928	1
Tennessee	73	\$2 million	10
Texas	9,586	\$200.2 million	962
Utah	859	\$17 million	83
Vermont	20	\$650,014	3
Virginia	996	\$25.2 million	122
Washington	5,036	\$106.5 million	471
West Virginia	15	\$350,116	1
Wisconsin	503	\$9.9 million	46
Wyoming	152	\$3 million	12
Total	51,754	\$1.3 billion	6,095

International students studying at colleges and universities across the United States contribute **\$33.8 billion** to the U.S. economy and support **335,423 jobs**. The economic contributions of international students are in addition to the immeasurable academic and cultural value these students bring to our campuses and local communities. For more information, access NAFSA's *International Student Economic Value Tool* at www.nafsa.org/economicvalue.

CONTACT

Rachel Banks | rachel.banks@nafsa.org
Sr. Director, Public Policy & Legislative Strategy

NOTE: Enrollment and dollars total includes data from Puerto Rico and the U.S. Virgin Islands. They are not listed, as the U.S. Department of Commerce does not include them in the datasets used for our jobs analysis.

*Sources used in NAFSA's economic analysis for 2021-2022 Academic Year: U.S. Department of Education, U.S. Department of Commerce, and the *Open Doors* report.
† No community colleges reporting to *Open Doors* survey.