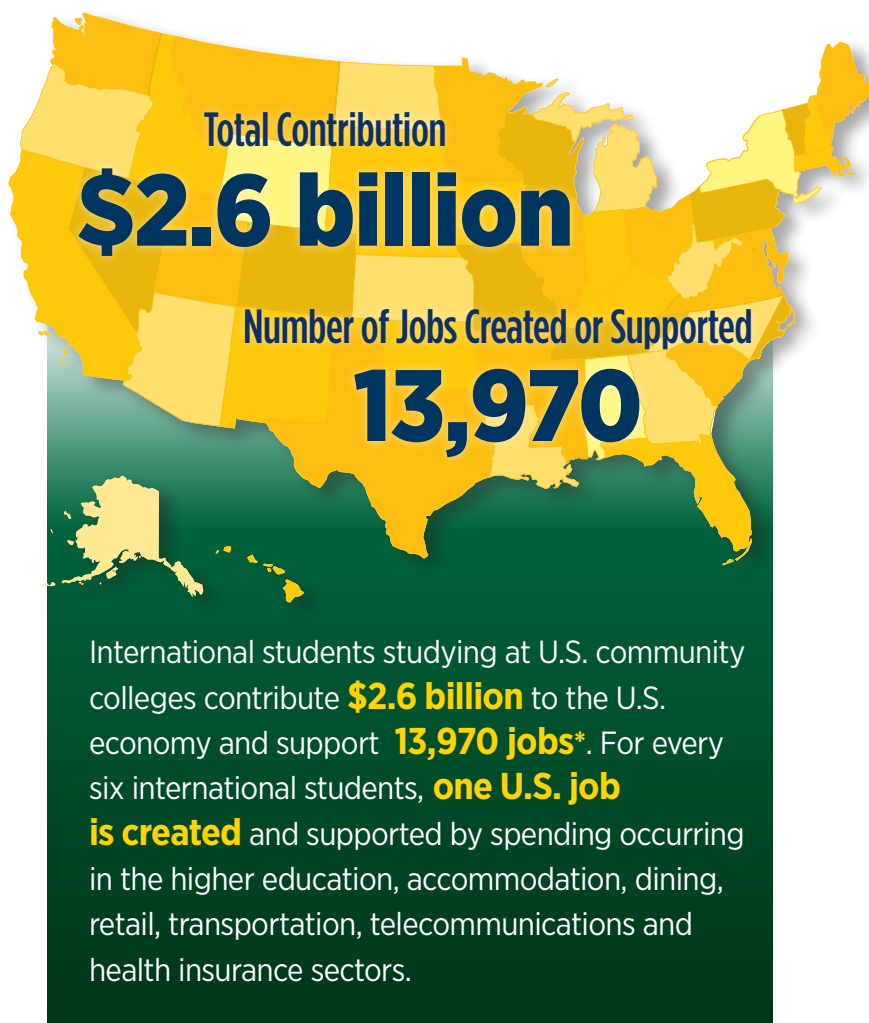


Economic Value of International Students at U.S. COMMUNITY COLLEGES



State	Int'l Students	U.S. Dollars	Jobs
Alabama	209	\$5.1 million	26
Alaska	3	\$83,275	N/A
Arizona	1,340	\$37.8 million	205
Arkansas	121	\$3.2 million	15
California	25,570	\$853.1 million	4,715
Colorado	507	\$17.4 million	98
Connecticut	333	\$11.1 million	61
Delaware	140	\$3.9 million	20
District of Columbia	N/A†	N/A†	N/A†
Florida	6,668	\$215.8 million	1,200
Georgia	636	\$17.5 million	102
Hawaii	944	\$30.3 million	157
Idaho	73	\$1.7 million	8
Illinois	1,278	\$40.4 million	237
Indiana	263	\$7.3 million	38
Iowa	787	\$18.7 million	87
Kansas	753	\$17.5 million	85
Kentucky	64	\$2.1 million	11
Louisiana	155	\$4.7 million	25
Maine	28	\$703,075	4
Maryland	2,381	\$92.6 million	519
Massachusetts	1,498	\$41.2 million	230
Michigan	1,012	\$23.7 million	121
Minnesota	601	\$15.9 million	80
Mississippi	45	\$1.0 million	5
Missouri	665	\$17.5 million	96
Montana	27	\$659,480	3
Nebraska	378	\$7.2 million	34
Nevada	438	\$12.9 million	68
New Hampshire	16	\$726,614	4
New Jersey	1,276	\$40.2 million	221
New Mexico	174	\$4.4 million	22
New York	3,872	\$131.4 million	697
North Carolina	625	\$17.9 million	96
North Dakota	51	\$1.0 million	5
Ohio	1,201	\$32.6 million	174
Oklahoma	635	\$18.4 million	94
Oregon	1,059	\$32.3 million	165
Pennsylvania	573	\$18.6 million	108
Rhode Island	139	\$7.0 million	40
South Carolina	288	\$8.2 million	43
South Dakota	6	\$133,558	1
Tennessee	166	\$5.5 million	32
Texas	15,025	\$366.5 million	2,008
Utah	1,046	\$26.1 million	146
Vermont	26	\$1.0 million	5
Virginia	2,253	\$69.6 million	390
Washington	9,924	\$259.2 million	1,323
West Virginia	27	\$741,286	4
Wisconsin	854	\$22.4 million	118
Wyoming	196	\$4.7 million	21
TOTAL	86,351	\$2.6 billion	13,970

International students studying at colleges and universities across the United States contribute nearly **\$41 billion** to the U.S. economy and support **458,290 jobs**. The economic contributions of international students are in addition to the immeasurable academic and cultural value these students bring to our campuses and local communities. For more information, access NAFSA's *International Student Economic Value Tool* at www.nafsa.org/economicvalue.

CONTACT

Rachel Banks | Director, Public Policy
rachelb@nafsa.org

NOTE: Enrollment and dollars total includes data from Puerto Rico and the U.S. Virgin Islands. They are not listed, as the U.S. Department of Commerce does not include them in the datasets used for our jobs analysis.

*Sources used in NAFSA's economic analysis for 2018-2019 Academic Year: U.S. Department of Education, U.S. Department of Commerce, and the *Open Doors* report.

† No community colleges reporting to *Open Doors* survey.