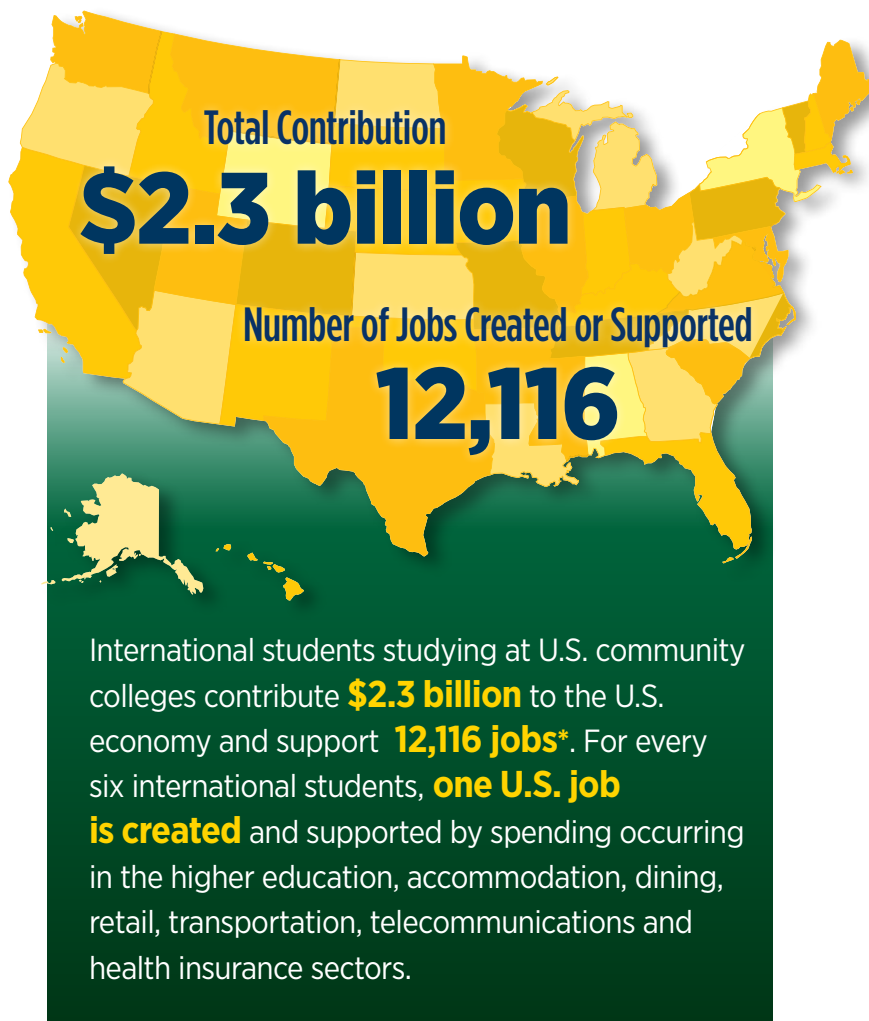


Economic Value of International Students at U.S. COMMUNITY COLLEGES



State	Int'l Students	U.S. Dollars	Jobs
Alabama	184	\$4.5 million	22
Alaska	2	56,811	N/A
Arizona	1,185	\$32.5 million	168
Arkansas	98	\$2.5 million	11
California	22,825	\$767.0 million	4,064
Colorado	438	\$14.4 million	78
Connecticut	303	\$9.6 million	50
Delaware	137	\$3.7 million	18
District of Columbia	N/A†	N/A†	N/A†
Florida	6,082	\$184.1 million	985
Georgia	896	\$33.4 million	195
Hawaii	759	\$23.8 million	118
Idaho	72	\$1.5 million	7
Illinois	1,238	\$37.4 million	211
Indiana	504	\$12.5 million	60
Iowa	720	\$16.1 million	72
Kansas	706	\$15.9 million	74
Kentucky	98	\$3.0 million	15
Louisiana	125	\$3.6 million	18
Maine	62	\$1.5 million	7
Maryland	2,324	\$89.3 million	480
Massachusetts	1,356	\$41.0 million	222
Michigan	1,139	\$25.7 million	126
Minnesota	593	\$14.8 million	72
Mississippi	59	\$1.3 million	6
Missouri	599	\$15.0 million	80
Montana	37	860,035	4
Nebraska	333	\$5.9 million	27
Nevada	417	\$11.8 million	60
New Hampshire	16	697,008	4
New Jersey	1,103	\$33.7 million	178
New Mexico	167	\$4.1 million	19
New York	3,632	\$120.9 million	614
North Carolina	996	\$27.2 million	140
North Dakota	50	984,622	4
Ohio	1,106	\$29.3 million	150
Oklahoma	613	\$17.0 million	84
Oregon	1,006	\$29.2 million	143
Pennsylvania	539	\$16.9 million	95
Rhode Island	127	\$6.6 million	36
South Carolina	266	\$7.0 million	35
South Dakota	5	106,552	N/A
Tennessee	117	\$3.8 million	21
Texas	13,291	\$315.8 million	1,672
Utah	1,016	\$25.5 million	137
Vermont	21	780,740	4
Virginia	1,881	\$58.1 million	311
Washington	8,849	\$220.7 million	1,079
West Virginia	27	617,072	3
Wisconsin	911	\$22.7 million	115
Wyoming	157	\$3.8 million	17
TOTAL	79,187	\$2.3 billion	12,116

International students studying at colleges and universities across the United States contribute **\$38.7 billion** to the U.S. economy and support **415,996 jobs**. The economic contributions of international students are in addition to the immeasurable academic and cultural value these students bring to our campuses and local communities. For more information, access NAFSA's *International Student Economic Value Tool* at www.nafsa.org/economicvalue.

CONTACT

Rachel Banks | rachelb@nafsa.org
Sr. Director, Public Policy & Legislative Strategy

NOTE: Enrollment and dollars total includes data from Puerto Rico and the U.S. Virgin Islands. They are not listed, as the U.S. Department of Commerce does not include them in the datasets used for our jobs analysis.

*Sources used in NAFSA's economic analysis for 2019-2020 Academic Year: U.S. Department of Education, U.S. Department of Commerce, and the *Open Doors* report.

† No D.C.-based community colleges reporting to *Open Doors* survey.